

INSTALLATION MANUAL

57100

Level of Difficulty

Easy

Installation difficulty levels are based on time and effort involved and may vary depending on the installer level of expertise, condition of the vehicle and proper tools and equipment.

Parts List

Item	Qty	Description
1	1	Electrical adapter
2	1	Mounting bracket
3	4	Bolt
4	4	Lock washer
5	4	Flat washer
6	4	Nut

Tools Required

Wrench set	--
------------	----

Step 1

Locate vehicle battery on the driver side under the hood and disconnect the negative battery terminal.

Step 2

Locate the factory 7-way attached to the hitch, behind the center of the rear bumper.

Step 3

Separate the factory socket and the 7-way. Insert the 57100 into the factory housing.

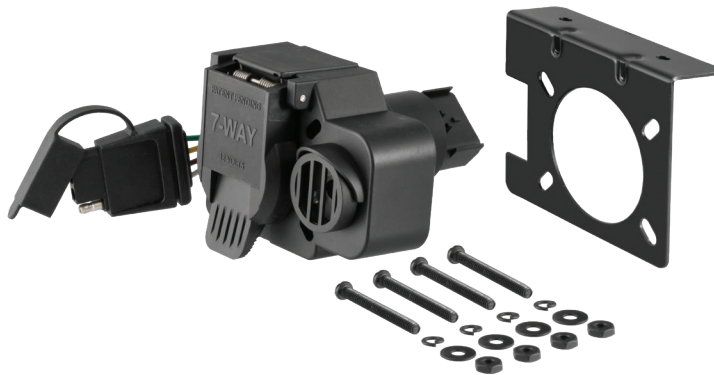
Step 4

Attached the mounting bracket to the vehicle and secure the socket. Reinstall all items removed during install and reconnect negative battery terminal.

WARNING

Do not exceed product rating or tow vehicle lamp load rating, whichever is lower.

Product Photo



NOTICE

Visit www.curtmfg.com for a full-color copy of this instruction manual, as well as helpful videos, guides and much more!

Before you begin installation, read all instructions thoroughly.

Proper tools will improve the quality of installation and reduce the time required.

All steps must be followed to ensure the product will function properly. Once installed, test for proper function by using a test light or connecting a properly wired trailer.

Product Registration and Warranty

CURT stands behind our products with industry-leading warranties. To get copies of the product warranties, register your purchase or provide feedback, visit: warranty.curtgroup.com/surveys