

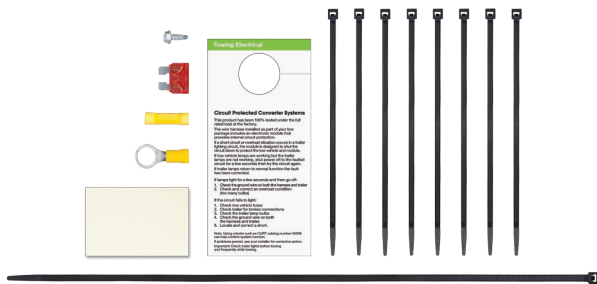
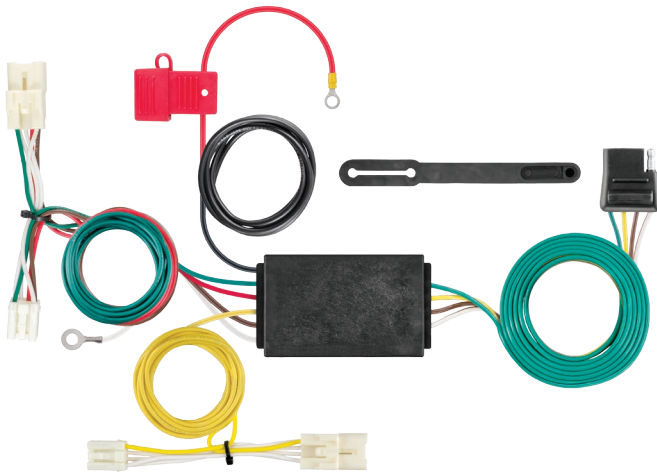
# INSTALLATION INSTRUCTIONS

**⚠ WARNING: DO NOT EXCEED PRODUCT RATING OR TOW VEHICLE LAMP LOAD RATING, WHICHEVER IS LOWER**

## APPLICATIONS

Make	Model
Hyundai	Sonata hybrid

## CUSTOM WIRING HARNESS



## WIRING LOCATION GUIDE

### PASSENGER CARS (P)

Representative vehicle shown below

P3 - Behind driver side taillight housing, inside of trunk

P4 - Behind passenger side taillight housing, inside of trunk



## NOTICE

All steps must be followed to ensure the wiring harness will function properly. Once installed, test for proper function by using a test light or connecting a properly wired trailer.

## TOOLS NEEDED

10mm socket

Phillips screwdriver

Ratchet

Crimping tool

Panel trim removal tool

## ⚠ WARNING

The battery connection must be fuse protected, 10 amp max. Exceeding the product rating can cause loss of warranty, overheating and potential fire. Do not exceed product rating or tow vehicle lamp load rating, whichever is lower.

Signal Circuits - 3.0 amps per side

Tail / Running Circuits - 6.0 amps total

Check vehicle owner's manual or contact the vehicle manufacturer for more information.

# INSTALLATION / SAFETY INSTRUCTIONS

## Step 1

Open the vehicle trunk. Remove all trunk floor coverings (A,B).

## Step 2

Locate vehicle battery on the passenger side under the plastic cover and disconnect the negative battery terminal (C).

## Step 3

Starting on the passenger side remove the push fasteners, cargo tie down and Phillips screw fastener holding the felt liner and scuff panel in place (D). Repeat on the driver side.

## Step 4

Remove the scuff panel by pulling out on the bottom and then up. Take care not to damage the alignment tabs on the back (E).

## Step 5


Pull back on the felt liner to locate the vehicle taillight wiring harness connectors (F). The connectors will be similar to those on the custom wiring harness. Separate the connectors from the taillight housing taking care not to damage the locking tabs (G).

## Step 6

Insert the custom wiring harness end with green wire between the separated connectors. Make sure the connectors are fully inserted with locking tabs in place (H).

## Step 7

Locate a suitable grounding point near the connector such as an existing screw with nut in the vehicle frame or drill a 3/32" pilot hole for the provided screw. The area should be free of rust, dirt and paint. Secure the white ground wire using the ring terminal and provided screw.

 **WARNING:** Check for miscellaneous items that may be hidden behind or under any surface before drilling to avoid damage and / or personal injury.

## Step 8

Route the power wire to the positive (+) battery terminal. Using a 10mm socket, remove the nut on the positive (+) terminal's auxiliary stud. Attach the power wire terminal ring and reinstall the nut.

## Step 9

Route the custom wiring harness end with the yellow wire to the driver side behind the removed scuff panel. Repeat steps 5-6 on the driver side using the harness end with the yellow wire.

## Step 10

Locate a flat spot inside the vehicle, near the taillight. Adhere the black converter box using the provided double-sided tape (I).

## Step 11

Install the provided 10 amp fuse in the fuse holder and test using the 4-flat with test lights or a properly wired trailer.

## Step 12

When in use, route the 4-flat to the center of the vehicle. When not in use, roll up and store in a convenient, out of the way location. Secure any loose wires with the provided cable ties.

## Step 13

Reinstall all items removed during install and reconnect negative battery terminal. Install the provided 4-flat dust cover to help prevent corrosion.

