

# INSTALLATION MANUAL

## Level of Difficulty

Easy

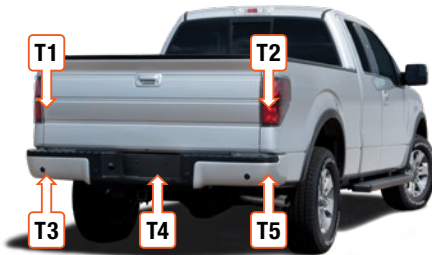
Installation difficulty levels are based on time and effort involved and may vary depending on the installer level of expertise, condition of the vehicle and proper tools and equipment.

## Wiring Location(s)

T3 and T5, Under dash

## Wiring Location Guide\* for Trucks (T)

|    |   |
|----|---|
| T1 | Behind driver side taillight housing    |
| T2 | Behind passenger side taillight housing |
| T3 | Behind driver side rear bumper          |
| T4 | Behind center of rear bumper fascia     |
| T5 | Behind passenger side rear bumper       |



\* Representative vehicle shown

## Tools Required

|              |                         |
|--------------|-------------------------|
| Socket, 10mm | Panel trim removal tool |
| Ratchet      | --                      |

## ⚠ WARNING

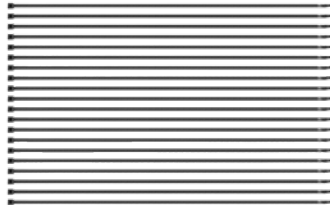
Do not exceed product rating or tow vehicle lamp load rating, whichever is lower.

Be sure not to lay tools across the positive (typically noted with red covers or a red '+' symbol). This can cause a ground to short causing sparks and / or electrical shocks.

## Product Photo



## Hardware Photo



## NOTICE

Before you begin installation, read all instructions thoroughly.

Proper tools will improve the quality of installation and reduce the time required.

All steps must be followed to ensure the product will function properly. Once installed, test for proper function by using a test light or connecting a properly wired trailer.

## Maintenance

Periodic inspection of all wires and connections should be performed to ensure there is no visible damage or loose connections.

### Step 1

Locate the vehicle battery in the engine compartment on the passenger side and disconnect the negative battery terminal. Be sure to fasten this wire down and away from the battery while completing the installation process.



### Step 2

Locate the vehicle taillight connectors underneath the vehicle on the frame below the bottom of the taillight opening on both sides of the vehicle. The connectors will be similar to those on the RV harness.



### Step 3

Starting on the driver side, position the RV harness connector ends containing yellow wires between the separated vehicle harness connectors. Press the connectors firmly into the vehicle connectors until they lock into place. Slide the red lock on the factory connector. Pull on the connectors to ensure the locks are engaged.



### Step 4

Locate a grounding point such as an existing screw or bolt in the frame of the vehicle or drill a 3/32" pilot hole. The area should be free from rust, dirt, and paint (abrasive pad/paper to remove rust and paint). Secure the white ground wire with the ring terminal on the existing fastener or with the provided ground screw.

#### ⚠ CAUTION

Check for miscellaneous items that may be hidden behind or under any surface before drilling to avoid damage and/or personal injury



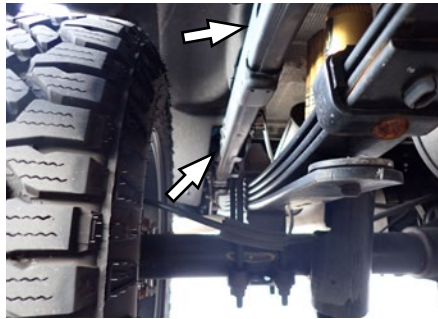
### Step 5

Route the portion of the RV harness with the connectors containing green wires across the rear of the vehicle and along the rear bumper. Route the connector ends to the vehicle connectors and repeat step 2 and 3. Secure the RV harness to the existing factory wire harness with the provided cable ties.



### Step 6

Route the 4-flat portion of the RV harness along the passenger side towards the front of the vehicle along the frame rail. Keep the harness above the suspension and close to the vehicle frame. Secure with the provided cable ties. Leave these cable ties loose until the 4 flat end can be secured.



### How to Fishwire

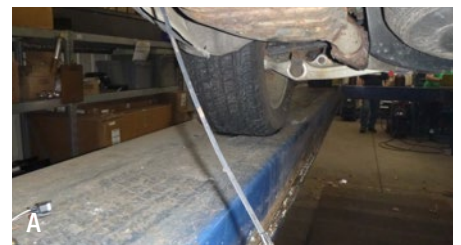
**A)** Fish wire is a way to push or pull an electrical wire through a blind hole. Make sure the wire is long enough to stick out on the other side.

Insert the fish wire through the blind hole and locate it on the other side.

**B)** Use tape to secure the harness to the fish wire and pull back up.

The fish wire or harness may get hung up on something, if this happens you may have to push back down, wiggle it around or twist the wire to loosen it from what it's hung up on.

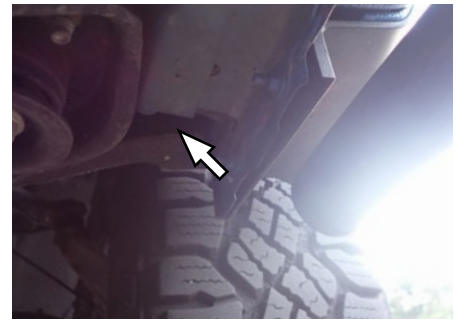
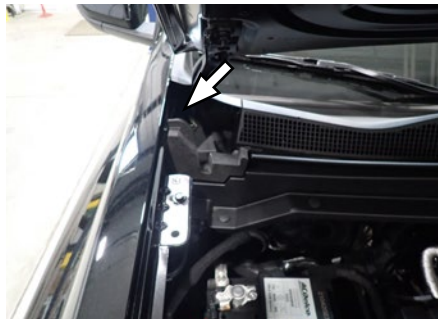
Fish wire could be anything from a cut-up wire hanger, stiff wire, rope or string depending on what is needed for the installation.





### Step 7

Starting from the engine compartment, run a fishwire down the inner fender and the fender of the truck just behind the passenger-side rear wheel. Route the 4-flat through where the front fender meets with the inner fender up into the engine compartment. You may need to loosen the inner fender to locate the fishwire.



### Step 8

After pulling the 4-flat wire up the body of the vehicle, route it under the rubber weather stripping and along the passenger-side inner fender to the front of the truck.



### Step 9

Route the 4-flat to a flat surface in the engine compartment. Locate a suitable position to mount the 4-flat bracket. Using the bracket as a template, mark the two holes and drill two 3/32" holes and attach the bracket using the two remaining screws. Secure the 4-flat to the frame rail with a cable tie. Take care not to drill through the body or any exposed surface.



### Step 10

Secure any excess wire so that it is not drooping or dangling, but not so tight that it causes unnecessary strain to the wire. After removing slack from the 4-flat wire, tighten any zip ties and add as needed. Use a zip tie to fasten any excess wire to a solid spot along the driver-side inner fender.

Reinstall all items removed during install. If it was disconnected at the beginning of the installation, reconnect the negative battery terminal. Install the provided 4-flat dust cover to help prevent corrosion.