

INSTALLATION MANUAL

11615

Level of Difficulty

Moderate

Installation difficulty levels are based on time and effort involved and may vary depending on the installer level of expertise, condition of the vehicle and proper tools and equipment.

Weight Carrying Capacity

Gross trailer weight (GTW)	2,000 lbs.
Tongue weight (TW)	200 lbs.

Parts List

Item	Qty	Description
1	4	Hex bolt, M10-1.25 x 40mm, CL10.9
2	4	Conical-toothed washer, 7/16"
3	2	Cable tie, 3/16" x 8"

Tools Required

Ratchet	Flathead screwdriver
Torque wrench	Aviation shears
Socket, 10mm	Wire brush
Socket, 11mm	Tape measure
Socket, 17mm	Tape

* For a tools reference guide visit curtmfg.com/trailer-hitch-installation

⚠ WARNING

Never exceed the vehicle manufacturer's recommended towing capacity.

Product Photo



NOTICE

Visit www.curtmfg.com for a full-color copy of this instruction manual, as well as helpful videos, guides and much more!

Before you begin installation, read all instructions thoroughly.

Proper tools will improve the quality of installation and reduce the time required.

This installation requires:

- No drilling
- Fascia trimming
- Heat shield trimming
- Temporarily lowering exhaust

Periodic inspection of the trailer hitch should be performed to ensure all mounting hardware remains tight and structural components are secure.

To help prevent damage to the product or vehicle, refer to the specified torque specifications when securing hardware during the installation process.

SAFETY INSTRUCTIONS

Safety glasses should be worn at all times while installing this product.

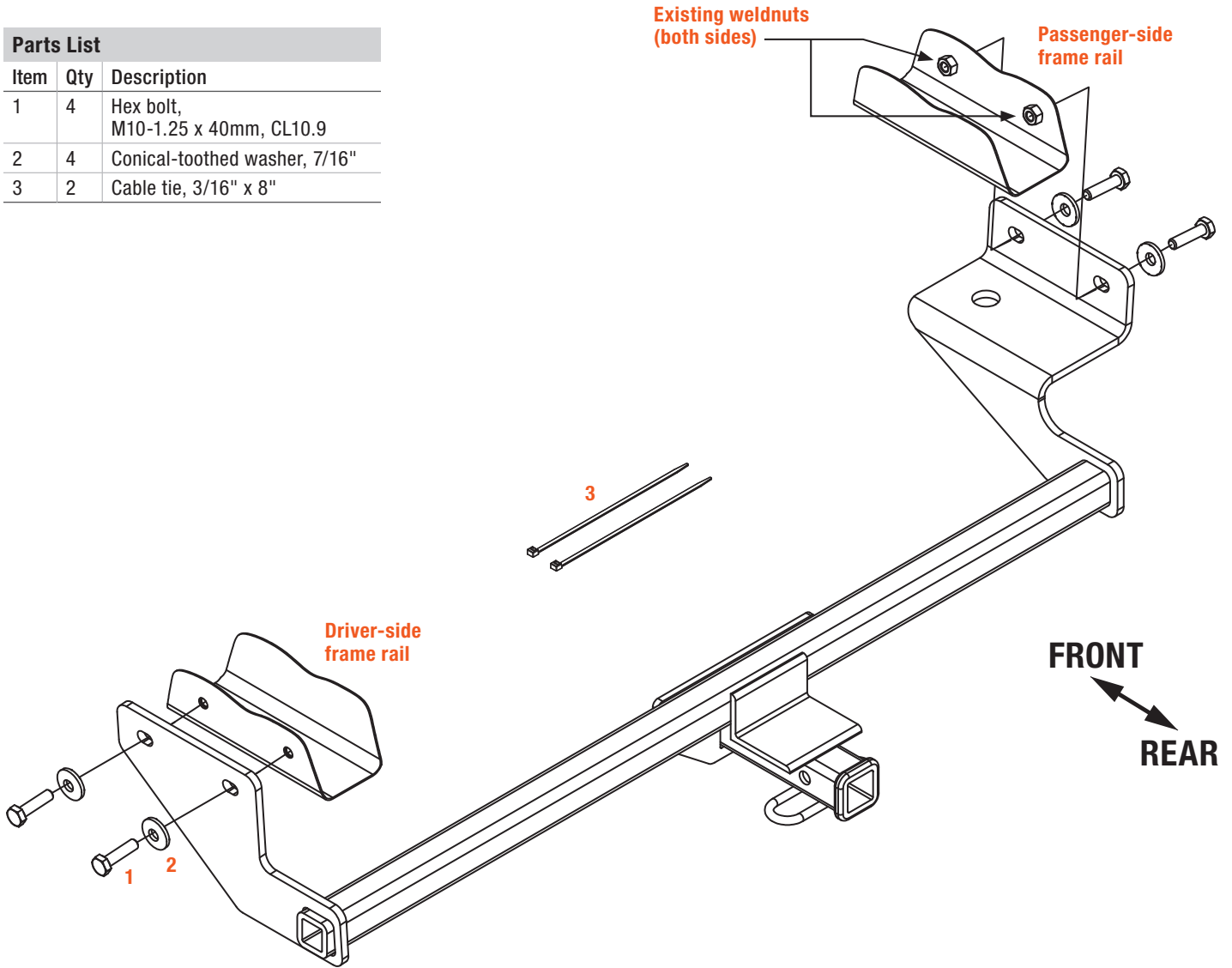
Product Registration and Warranty

CURT stands behind our products with industry-leading warranties. To get copies of the product warranties, register your purchase or provide feedback, visit: warranty.curtgroup.com/surveys

ASSEMBLY

Parts List

Item	Qty	Description
1	4	Hex bolt, M10-1.25 x 40mm, CL10.9
2	4	Conical-toothed washer, 7/16"
3	2	Cable tie, 3/16" x 8"



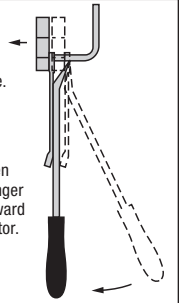
RUBBER ISOLATOR REMOVAL DIAGRAM

This technique can be used if exhaust hanger removal pliers are not available.

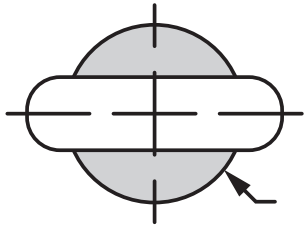
Using a 5/8" open end wrench, slide the wrench up to the rubber isolator, cradling the hanger rod as shown.

Place the flat edge of a pry bar between the wrench and the hanger stop or hanger rod. Then simply rotate the pry bar toward the wrench to remove the rubber isolator.

Note: Using a lubricant or soapy water on the hanger rod and the rubber isolator helps removal.

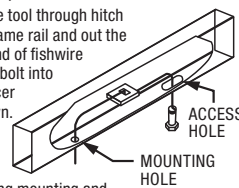


HOLE ENLARGEMENT



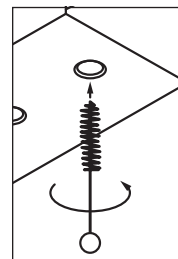
FISHWIRE TECHNIQUE

Insert coiled end of fishwire tool through hitch mounting hole in vehicle frame rail and out the access hole. Pass coiled end of fishwire through spacer and thread bolt into coil. Kink wire to keep spacer separate from bolt as shown. Pull fishwire, spacer and bolt through frame and out mounting hole. Use fishwire to guide hitch during mounting and prevent loss of bolt or spacer inside frame rail.



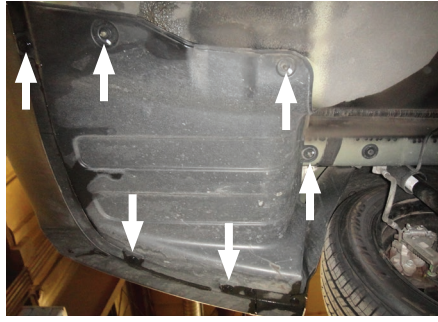
WELDNUT CLEANING

To remove debris from weldnuts in frame, spray lubricant or compressed air into the hole. For heavy debris, use a wire brush. Take care not to damage threads.



Step 1

Remove driver-side underbody panel by removing three push fasteners and two nuts with a 10mm socket and one captured nut with an 11mm socket.



Step 2

Lower the exhaust by removing three rubber exhaust isolators.

Note: Support the exhaust to prevent damage



Step 3

Remove the lower rear fascia by first removing two screws and eight push fasteners. Then push down on the retaining fasteners while pulling the panel away from the vehicle.



Step 4

Remove the plastic fascia support brackets by removing three screws.

Return the parts to the vehicle owner.



Step 5

Raise the trailer hitch into position and secure using M10 hex bolts (#1) and conical-toothed washers (#2).

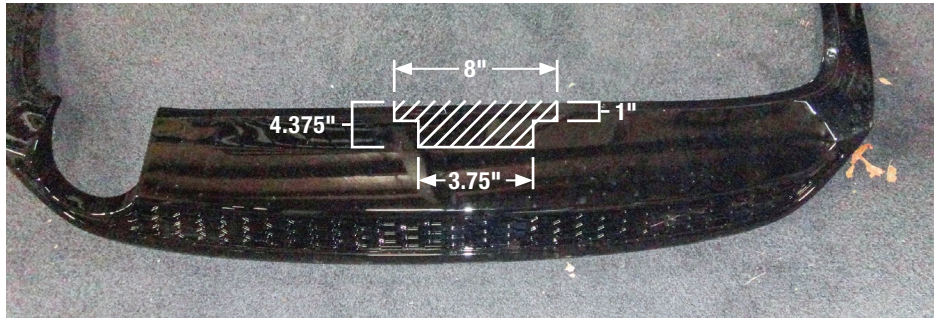
Note: You may need to clean weldnuts with a wire brush before installing hardware.

Torque M10 hardware to 48 ft-lbs.



Step 6

Trim the bumper fascia using the diagram for reference. Reinstall using cable ties (#3) around the hitch where fascia supports were removed.



Step 7

Reinstall exhaust isolators removed in Step 2 and reinstall underbody panel removed in Step 1.



Final Installed Image



TOWING BASICS & SAFETY INFORMATION

For information on safely towing your trailer, visit curtmfg.com/understanding-towing.