



232 Branford Rd.  
North Branford, CT 06471  
Orders: 203.481.9460  
Tech: 203.481.9943  
Fax: 203.481.9641

## Product Instructions

Part # 22-565, 22-566, 22-567, 22-568 and 22-569

Universal Oil Input Sandwich Adapters

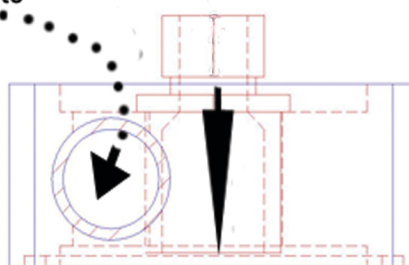


Port before filtration

1/2 N.P.T. Port  
oil from engine passes  
through adapter to  
accusump and back to  
engine.

Filter install side

Filtered oil back to engine



Engine side

1. Remove Adapter contents and confirm quantities.
  - a) (1) Oil Adapter
  - b) (1) Adapter nut
  - c) (1) O-ring installed on Adapter



22-568

2. Take adapter assembly and apply a small amount of oil to the O-ring surface and install adapter assembly with O-ring facing towards the engine block.
3. Hold adapter with ports facing desired direction and tighten center nut onto your blocks filter nipple by hand then using a 1-1/4" wrench.

