

# Steering Column Boot Trimming Instructions

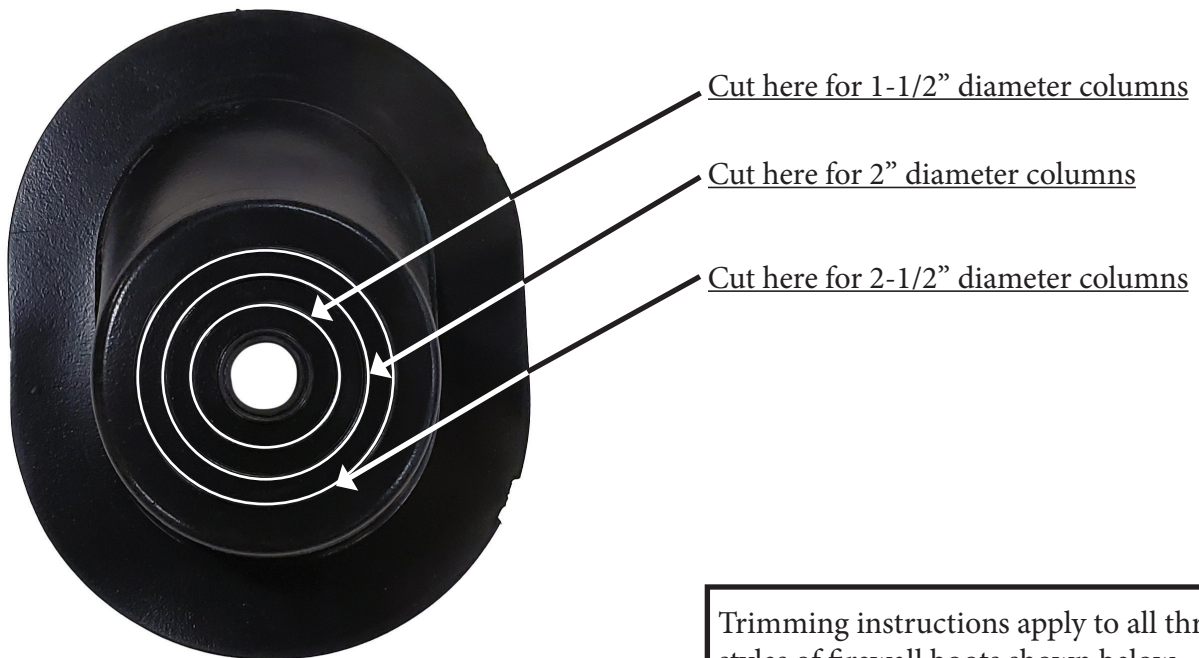
**I-9**

This boot comes with a 5/8" column hole. This hole can be trimmed to fit steering columns up to 2-1/2" diameter. Be sure to measure your steering column diameter prior to trimming.

To cut the rubber steering column boot we find that a sharp pointed Xacto type razor knife works best. Take your time and proceed with the cut slowly and carefully for the best results.

Cut boot one ring smaller than your actual steering column diameter to insure a tight fit to the steering column. This will result in a "stretch fit" over your column for a nice tight seal. See table and illustration below for location of cuts.

- 3/4" Diameter. No cut required.
- 1-1/2" Diameter. Cut at first ring.
- 2" Diameter. Cut at second ring.
- 2-1/2" Diameter. Cut at third ring.



Trimming instructions apply to all three styles of firewall boots shown below



# 1967-1976 Mopar Instructions

# I-9

**\*\*IMPORTANT\*\*** The gray protective coating is on the polished side of the bezel. DO NOT remove protective film until you are ready for final installation. A 35% restock fee will apply to all items returned without protective film.

Follow instructions for trimming the column boot to your specific diameter on the previous page.

The firewall boot is designed to be installed on the engine side of the firewall and will bolt into the existing factory mounting holes with the supplied hardware. The column floor mount with plate will be installed on the inside of the firewall.

Install rubber boot into stainless bezel. Pay attention to the orientation of the boot to insure it matches the angle that your steering column comes through the firewall.

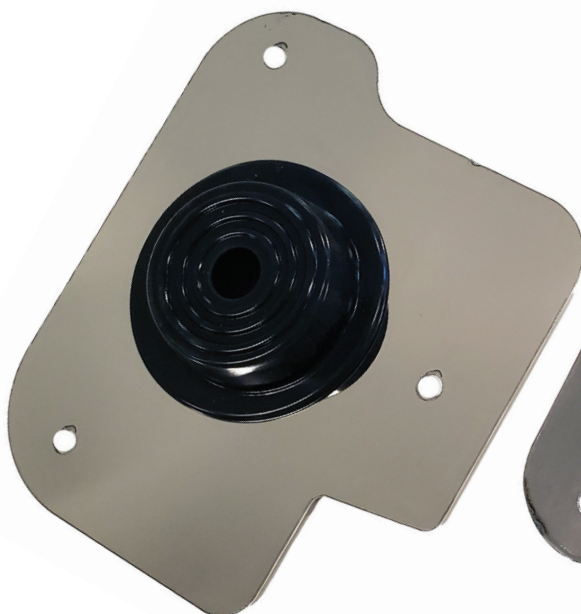
Mount steering column bracket to inner plate with the four 10-32 pull studs and 10-32 nuts.

Install adhesive rubber weatherstripping to the unpolished side of the firewall plate along the outside edge of the plate. Insert the three 5/16-18 bolts through the plate and through the factory holes in the firewall.

Attach inner mounting plate to external firewall boot sandwiching the vehicles firewall between the two. Fasten with the supplied 5/16-18 NyLock nuts. Tighten bolts evenly in a cross pattern to avoid distorting plates.

Slide steering column through clamp and firewall boot. Tighten clamp to the steering column.

Outer Plate with Boot



Inner Plate with Mount

