

# Steering Column Boot Trimming Instructions

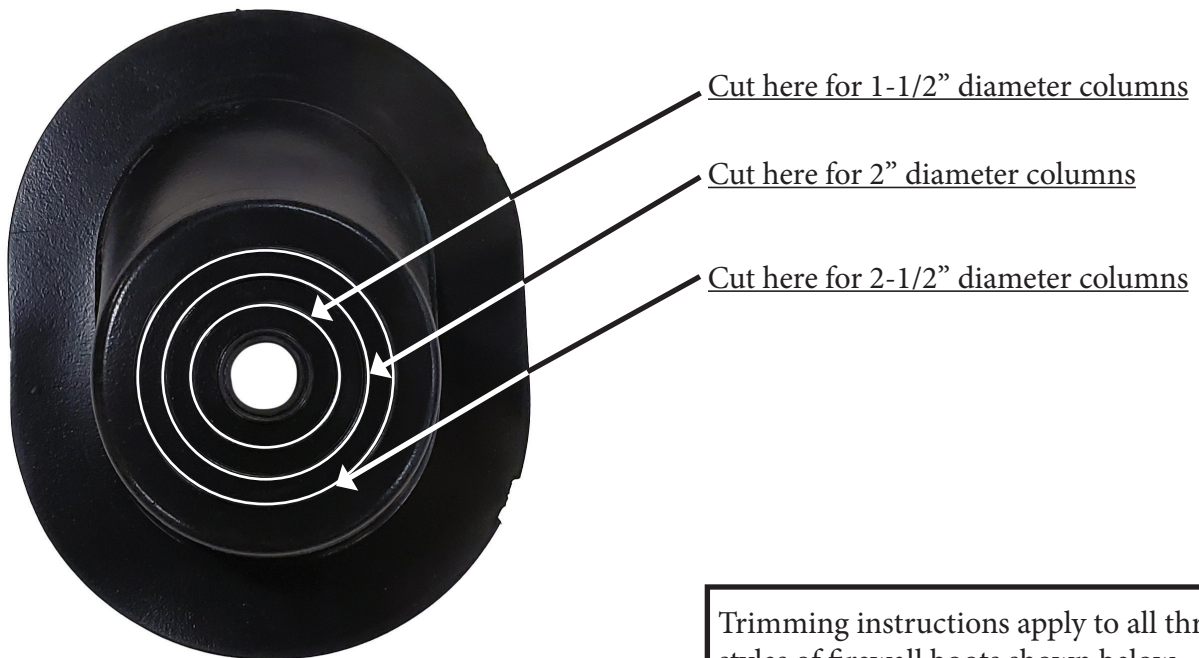
# I-3

This boot comes with a 5/8" column hole. This hole can be trimmed to fit steering columns up to 2-1/2" diameter. Be sure to measure your steering column diameter prior to trimming.

To cut the rubber steering column boot we find that a sharp pointed Xacto type razor knife works best. Take your time and proceed with the cut slowly and carefully for the best results.

Cut boot one ring smaller than your actual steering column diameter to insure a tight fit to the steering column. This will result in a "stretch fit" over your column for a nice tight seal. See table and illustration below for location of cuts.

- 3/4" Diameter. No cut required.
- 1-1/2" Diameter. Cut at first ring.
- 2" Diameter. Cut at second ring.
- 2-1/2" Diameter. Cut at third ring.



Trimming instructions apply to all three styles of firewall boots shown below



# Stainless Trim Installation Instructions

# I-3

**\*\*IMPORTANT\*\*** The gray protective coating is on the polished side of the bezel. **DO NOT** remove protective film until you are ready for final installation. A 35% restock fee will apply to all items returned without protective film.

Follow Instructions for trimming the column boot to your specific diameter on the previous page.

These instructions are somewhat universal and apply to several direct fit firewall boots.

This firewall boot is designed to be installed on the engine side of the firewall and will bolt into the existing factory mounting holes with the supplied hardware.

Install rubber boot into stainless bezel. Pay attention to the orientation of the boot to insure it matches the angle that your steering column comes through the firewall.

If your firewall has a raised radius edge as shown in picture below you will need to trim away this radius so the plate will sit flush on the firewall.

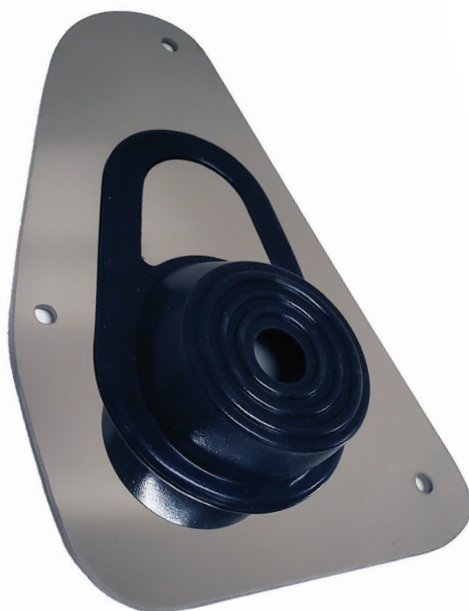
Unless provided your existing lower steering column mount will be used.

Insert the supplied bolts through the plate and firewall. Install fender washers and Ny-lock nuts on the inside of the firewall.

Evenly tighten all mounting bolts in a cross pattern until just touching the bezel then tighten 1/4 turn at a time on each screw in a cross pattern until the bezel pulls flush with the firewall.

To install optional decorative insert sand both the area of the rubber boot and back of decorative insert with 80-120 grit sandpaper for more adhesive grip. Glue in place with 2 part epoxy or Silicone RTV. Allow ample time to cure prior to driving.

32676918-1 Shown



Radius may need to be trimmed for plate to sit flush.

