

Instructions for '97-'04 Ford F150, '97-'99 F250

Part # 000983

CAUTION: NOT ALL VEHICLES CONFORM TO PUBLISHED SPECIFICATIONS! TEST FIT THIS ASSEMBLY IN YOUR TRUCK BEFORE PAINTING OR ALTERING IN ANY WAY. ONLY ASSEMBLIES IN NEW CONDITION WILL BE ACCEPTED FOR RETURN OR EXCHANGE.

REMOVAL:

1. Engage the ignition switch / steering column lock with the steering wheel & wheels centered.
2. Remove the bolt joining the factory shaft to the base of the steering column inside the vehicle and steering box. Collapse the stock shaft and completely remove the shaft with the stock firewall seal. Take care when removing firewall seal as this will need to be reused on the new steering shaft.

NOTE: Test fit Borgeson Shaft prior to cutting stock shaft to remove firewall boot to insure it is built properly.

3. Remove firewall seal from your original shaft. This can sometimes be accomplished by pulling the telescopic shaft hard enough to separate the two pieces, if you are unable to separate the two shafts you will need to cut a universal joint off of one end to be able to slide the firewall seal off of the factory shaft.

INSTALLATION:

4. Install your original firewall seal on the new shaft. Remove the upper universal joint from the larger tubular end of the Borgeson shaft. Note that one set screw is very long and must be removed all of the way to remove the universal joint. (See figure C) Slide firewall seal over new shaft and reinstall universal joint.

NOTE: Orientation of boot



5. With the Borgeson shaft assembly fully collapsed. Install column end of new shaft assembly through the firewall and slide the u-joint over the base of the column shaft. Push the firewall seal into the firewall and be sure it is seated. Tighten set screws and then lock nuts on the steering column universal joint.

NOTE: Upper column joint must be installed first to insure proper alignment of steering wheel.

6. Extend shaft so that the lower universal joint reaches the steering box input shaft. Be sure not to insert shaft too far in to joints. (See fig. B) Tighten set screws then lock nuts.

After approximately 100 miles, loosen lock nuts and retighten set screws and then lock nuts. We recommend Loctite 222 for ease of removal.

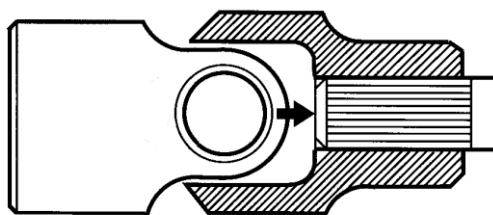


FIGURE B

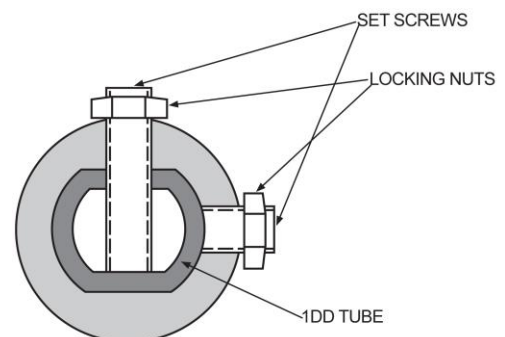


FIGURE C

Borgeson Universal Co., Inc.
9 Krieger Dr. Travelers Rest, SC 29690
www.borgeson.com