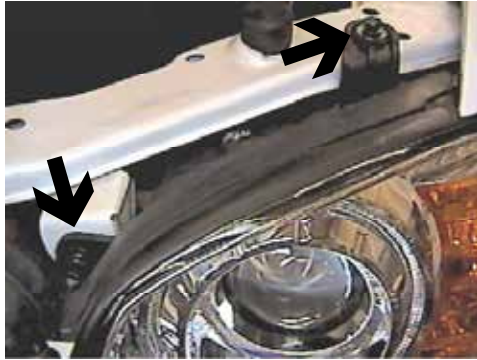




**BX2708 Installation Instructions
2003 Kia Optima LX**

Serial No.

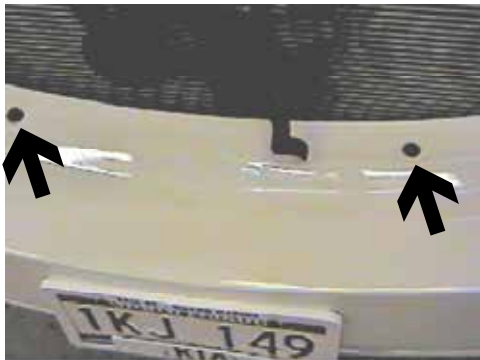
Strong As An Ox™ The headlight assembly, front fascia, horn bracket and windshield washer reservoir are removed for baseplate installation. Drilling is required. Trimming of air dam on metal bumper is required. The BX8869 is available for the vehicle. Attachment Tabs are 24 inches center to center and a height of 13 3/4 inches.



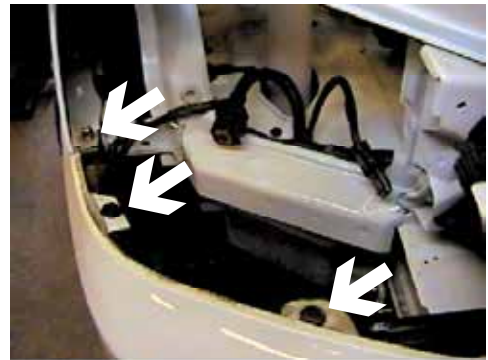
1. Remove two metric bolts from both head light assemblies with the 10MM socket, pull forward and set aside.



2. Remove the metric bolt just inside of fog light with the 10MM socket and one push pin both sides.



3. Remove two push pins from top edge of fascia between fog lights.



4. Just under headlight assembly, remove two push pins and one metric bolt with the 10MM socket, both sides.



5. Just forward of front tire is one metric bolt to remove from fascia's corner, both sides.



6. Remove two push pins from lower edge of fascia just forward of front tires, both sides.



Strong As An Ox™



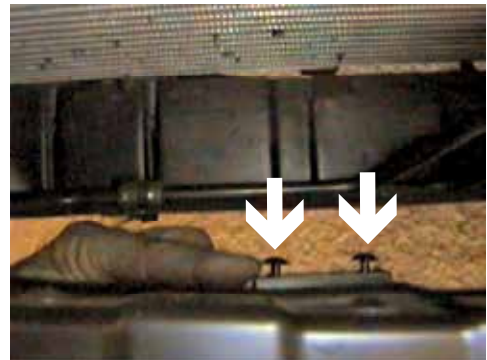
7. Remove two phillips head screws from fascia opening, pull fascia forward and set aside.



8. Remove four metric bolts from driver's side air baffle using the 10MM socket, pull baffle down and set aside.



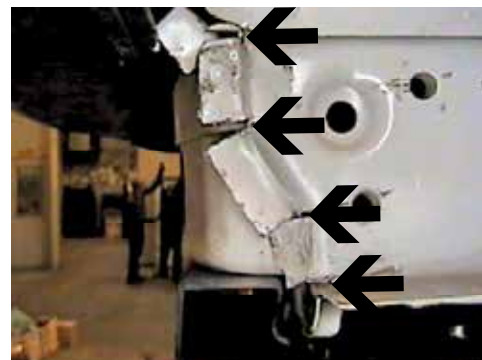
9. Remove one metric bolt from washer reservoir using the 10MM socket. Remove the three metric bolts from tie down bracket with the 14MM socket, both sides and set brackets aside (brackets will not be reinstalled).



10. Locate fascia bracket that is attached to the back of metal bumper. Using the phillips screw driver, remove the two phillips screws and set aside, both sides (fascia brackets will not be reinstalled).



11. Using a hack saw, remove depression on bottom rib of bumper.



12. Just forward of tie down brackets, make four cuts in ribbing, with the hack saw and bend ribbing forward to allow baseplate to slide into place.



Strong As An Ox™



13. Slide baseplate over bent ribbing to align with tie down bracket holes in frame. While maintaining a level position with baseplate on the frame, tighten existing metric bolts from tie down brackets, both sides. **Be sure to use loctite on all bolts before tightening. Tighten all bolts according to Torque Chart in General Instruction Sheet.** Reinstall existing metric bolt for the washer reservoir on the passenger's side with the 10MM socket and the four metric bolts on the driver's side air baffle with the 10MM socket.

14. Reinstall fascia using existing hardware. Replace the two phillips screws on fascia's opening with the two self tapping screws into brackets on the baseplate. Reinstall head light assemblies. **Be sure all electrical components are plugged in properly.**

15. The dimensional variations between otherwise identical cars can be considerable. While the location and size of the holes in the baseplate were designed to allow for easy installation, it may be necessary to file a hole slightly to allow a bolt to clear.

16. Install the tow bar and safety cables according to the instructions included in their packages.

17. Do **not** substitute other devices if the tow bar pin and clip are lost.

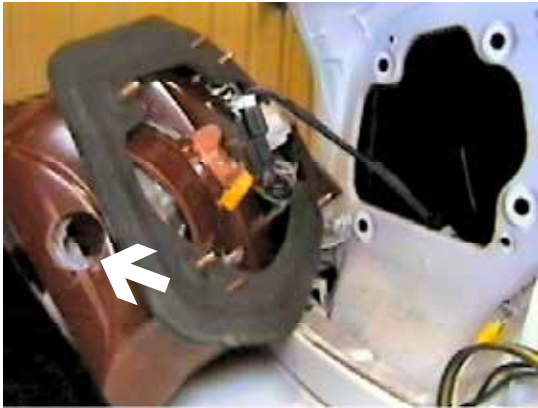
18. DEALER OR INSTALLER: BE CERTAIN THE USER RECEIVES THE INSTRUCTION SHEET.



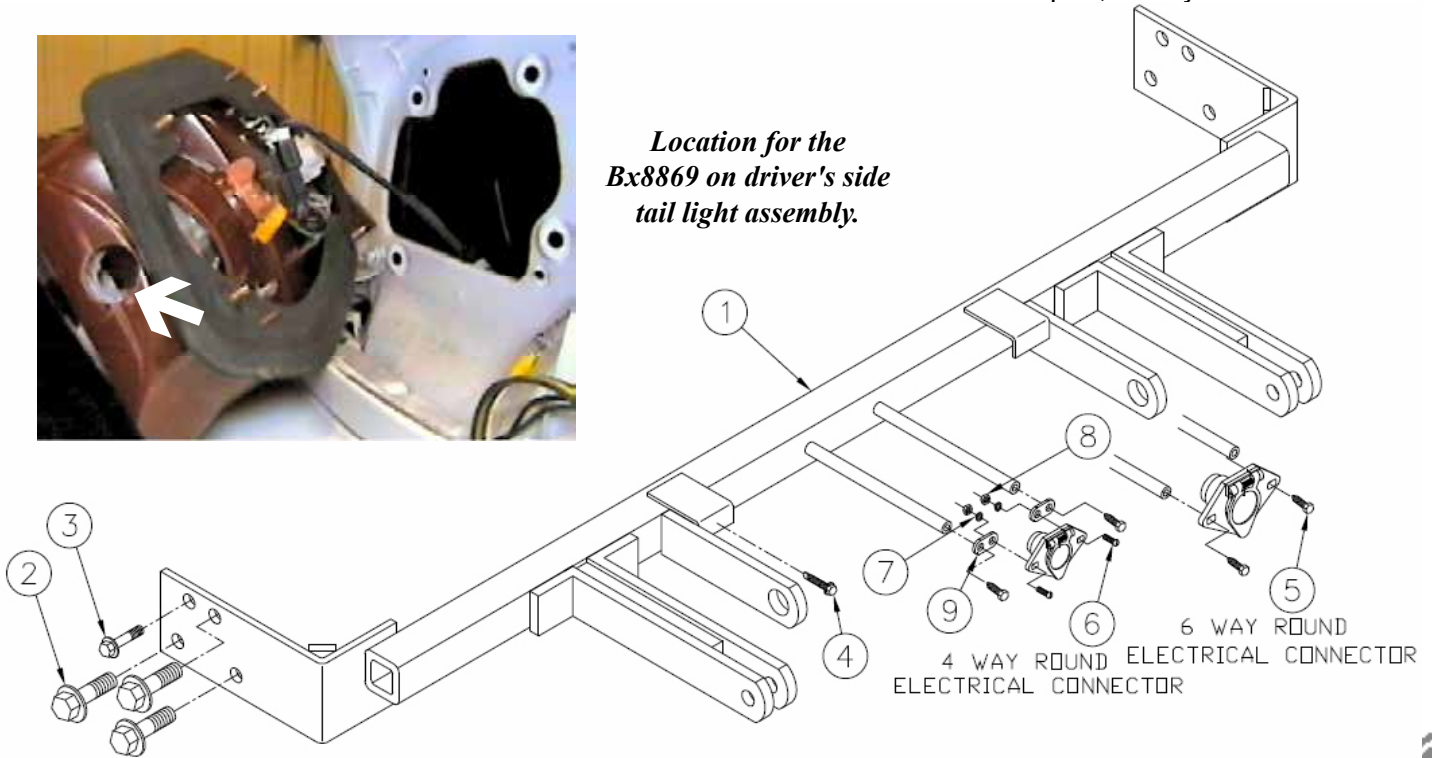
Strong As An Ox™

Parts List

Ref. No.	Qty.	Part No.	Description
1	1	61-5964	Weldment, Base Plate, BX2708
2	6		Existing Metric Bolts from Tie Down Brackets
3	1		Existing Metric Bolt from Washer Reservoir
4	2	201-0654	#10-16 x 1 Self Drilling Screw
5	2	201-0979	#12-14 x 1" Self Drilling Screw, ZP
6	2	202-0047	#10-32 Hex Nut
7	2	203-0054	#10 Lock Washer
8	2	201-0192	#10-32 x 1/2 Slot, Rd. Hd. Screw
9	2	101-5822	Adapter, 4 Way Connector



Location for the Bx8869 on driver's side tail light assembly.



Tools Required

8MM Socket
Hack Saw

10MM Socket
Loctite

14MM Socket
Phillips Screw Driver

IMPORTANT: Use only genuine factory replacement parts on your Base Plate. Do not substitute homemade or nontypical parts. If a bolt is lost or in need of replacement, for your safety and the preservation of your Base Plate, be sure to use a replacement bolt of the same grade (Usually Grade 5, refer to parts list). Repair parts may be ordered through your nearest **Blue Ox** dealer or distributor.

General Information

1. Ensure that your product(s) are registered online at www.blueox.com. It is crucial to register your product(s) so that you may be alerted of product offerings, updates, upgrades, maintenance and safety bulletins, and/or recalls.
2. **It is the owner's responsibility to inspect all towing equipment for cracked welds, missing or worn parts and loose bolts before each towing trip.** Be sure to use Loctite® Red on all bolts and tighten to the recommended specifications.
3. **It is the owner's responsibility to hook up all towing equipment per manufacturer's instructions/recommendations.**
4. Remove the attachment tabs when not in use (if applicable).

Notice To Baseplate Installer

1. It is YOUR responsibility to watch for:

- Oil cooler and air conditioner lines
- Electrical wires and hoses
- Missing parts or attaching points on the frame

** If the baseplate is improperly installed and is against a wire or hose, it could cause fluid leaks or electrical shorts some time after the actual baseplate installation.

Permanent Baseplate Safety Cable Installation

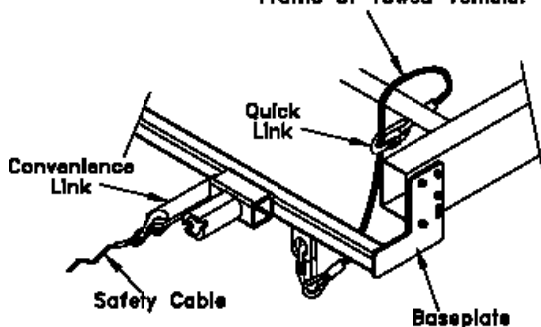
Permanent baseplate safety cables are strongly recommended when towing a vehicle with a tow bar. The principle function of the permanent baseplate safety cables is to prevent the towed vehicle from breaking loose in the event the connection between the frame of the towed vehicle and the baseplate fails or becomes disconnected. The cables must be connected from the baseplate to the frame rail or cross member of the vehicle's frame. The illustrations below show the possible arrangements recommended by Blue Ox®. Each permanent baseplate safety cable must have an adequate weight rating for the towing system. The weight rating of the two (2) cables together will not qualify.

Do not mount the permanent baseplate safety cables against wires, hoses or brake lines.

These permanent baseplate safety cables should remain installed as long as the baseplate is installed on the vehicle. Permanent baseplate safety cables are to be used in conjunction with, and NOT a replacement for legally required safety cables attaching the towed vehicle to the towing vehicle.

OPTION #1

Permanent Baseplate Safety Cables to Cross Member or Frame of Towed Vehicle.



OPTION #2

Permanent Baseplate Safety Cables to Cross Member or Frame of Towed Vehicle.

