



BX3778

**2008-14 Scion XD
Installation Instructions**

Serial Number

Please read BOTH these Installation Instructions and the General Towing Instructions before attempting to install or operate this equipment.

- Blue Ox® towing products and accessories are intended to be installed by Blue Ox® Dealers who are familiar with our products and have the equipment and knowledge to do “fit work.” When necessary, Blue Ox® Dealers can be found at www.blueox.com or by contacting our Customer Care Department at (402) 385-3051.
- Many Blue Ox® baseplates are designed to use existing holes and hardware to mount the baseplate to the towed vehicle. Even though bolts are there, do not assume they are adequate for baseplate mounting. Always use hardware supplied in the hardware kit or existing hardware specified in the Baseplate Towing Installation Instructions.

Attachment Tab Height: 14”
Attachment Tab Width: 24”

Bolt Torque Specifications
Torque in Foot-Pounds for Metric Bolts

Bolt Size	Grade 8.8	Grade 10.9
6MM	6	8
8MM	16	22
10MM	31	40
12MM	54	70
14MM	89	117

Confirm the towability and pre-towing procedures for your vehicle with the owner’s manual or contact the vehicle’s manufacturer for specific towing procedures.

Bolt Torque Specifications
Torque in Foot-Pounds for Inch Bolts

Bolt Size	Grade 5	Grade 8
1/4”	10	14
5/16”	19	29
3/8”	33	47
7/16”	54	78
1/2”	78	119
5/8”	154	230



If the front of your vehicle looks different than these, call us at (402) 385-3051.

⚠ WARNING

Failure to read and follow these instructions could result in separation of the towed vehicle from the tow bar, causing property damage, loss of towed vehicle, personal injury or death.



BX3778

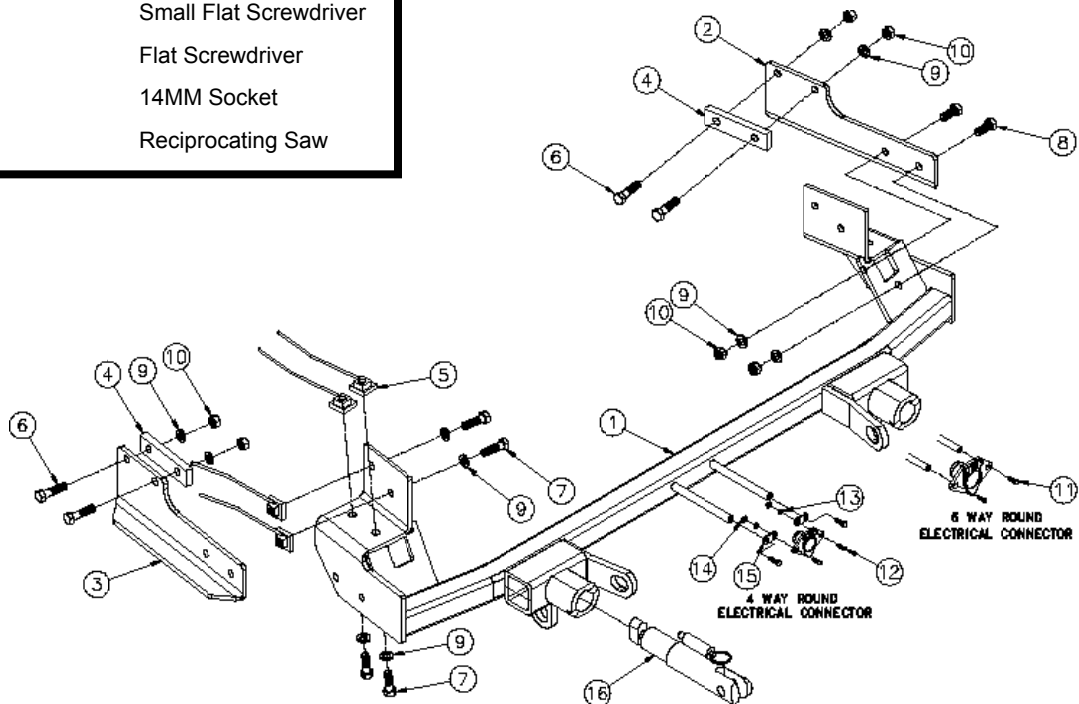
2008-14 Scion XD Installation Instructions

Parts List

Ref. No.	Qty.	Part #	Description
1	1	61-6483	WLDM'T, BASEPLATE, BX3778
2	1	101-7174	PLATE, SUPPORT, DS, BX3778
3	1	101-7175	PLATE, SUPPORT, PS, BX3778
4	2	102-6861	SPACER PLATE, BX3778
5	8	61-5208	WLDT, NUT PLT, 1/4X1X1, 3/8 BLT WIR
6	4	201-0440	3/8-16 X 1 1/2 HEX BOLT, GRD.5, ZP
7	8	201-0368	3/8-16 X 1 1/4 HEX HEAD BOLT,GRD. 5
8	4	201-0443	3/8-16 X 1 HEX BOLT GRD.5, ZP
9	16	203-0010	3/8 LOCK WASHER, ZP
10	8	202-0003	3/8-16 HEX NUT, ZP
11	2	201-0979	#12-14 x 1" Self Drilling Screw, ZP
12	2	201-0192	10-32 X 1/2 SLOT, RD. HD. SCREW
13	2	203-0054	#10 LOCK WASHER
14	2	202-0047	#10-32 HEX NUT
15	2	101-5822	ADAPTER, 4 WAY CONNECTOR
16	2	62-3468	ATT TAB ASSY, REM, SF/SB, 1 HOLE
	2	290-0437	RECEIVER, CAP PLUG (BLK) not shown)
	2	229-0359	QUICKLINK, 3/8", ZP (not shown)
	2	226-0046	BASEPLATE SAFETY CABLE, 36" CL III (not shown)

Tools Required

Loctite® RED	Small Flat Screwdriver
9/16" Socket	Flat Screwdriver
10MM Socket	14MM Socket
13/32" Drill Bit	Reciprocating Saw



Important:

Use only genuine factory replacement parts on your baseplate. Do **NOT** substitute homemade or non-typical parts. If a bolt is lost or in need of replacement, for your safety and the preservation of your baseplate, be sure to use a replacement bolt of the same grade (In most cases it will be Grade 5, please reference the parts list above). Replacement parts may be ordered through your nearest Blue Ox® Dealer or Distributor. Failing to follow and/or altering these installation instructions in either installation or required equipment will void the manufacturer's warranty.



BX3778

2008-14 Scion XD Installation Instructions

Attachment Tabs:

Due to the design of the removable tabs, the RangeFinder II tow bar can not be used. Adapters, except the BX8833 and BX88151, can not be used with this baseplate.

Installation Notes: The fascia, washer reservoir and horn are removed and reinstalled during installation of the baseplate. Drilling is required. Trimming is required.

The dimensional variations between otherwise identical vehicles can be considerable. While the baseplate was designed for easy installation, it may be necessary to tailor the baseplate slightly to compensate for auto manufacturer's tolerances. These minor adjustments may include filing a hole slightly, bending electrical rods or bending end plates.

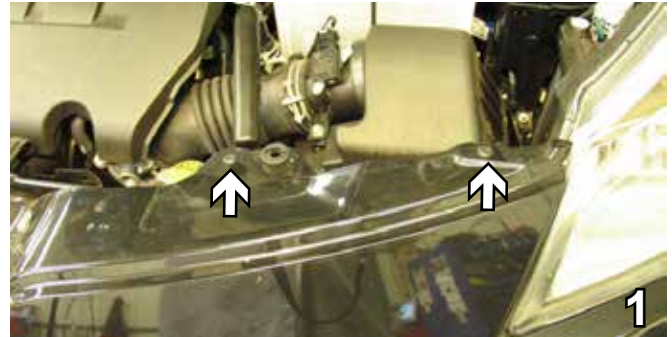
The BX8869 Bulb and Socket Wiring Kit is recommended for this vehicle.



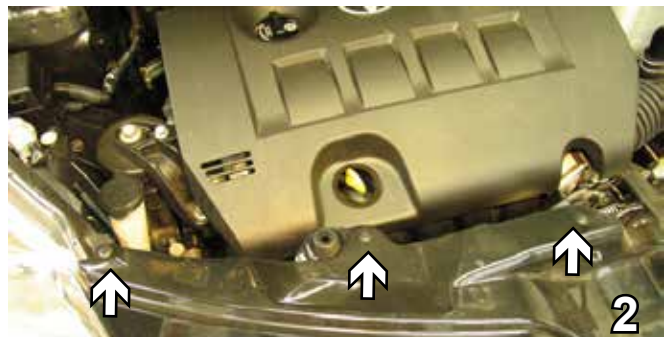
Possible Location of the BX8869 Bulb & Socket Wiring Kit

Handling of some cosmetic parts when installing this product may require the use of protective covers, rags, specialty tools, etc. to prevent damage.

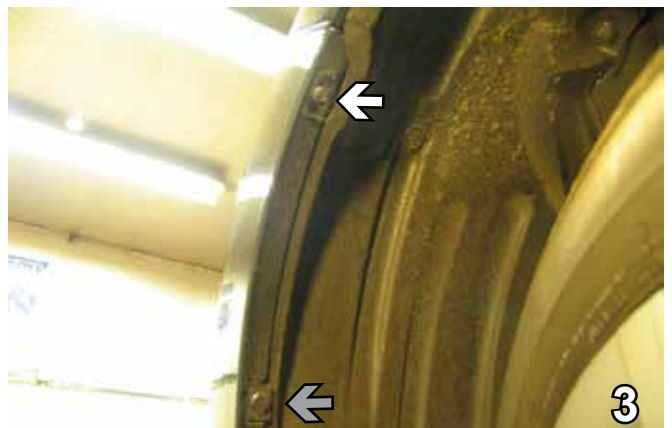
Installation Instructions:



1. Push in to remove two plastic push pins from the radiator cover driver's side. Set push pins aside to be reinstalled later.



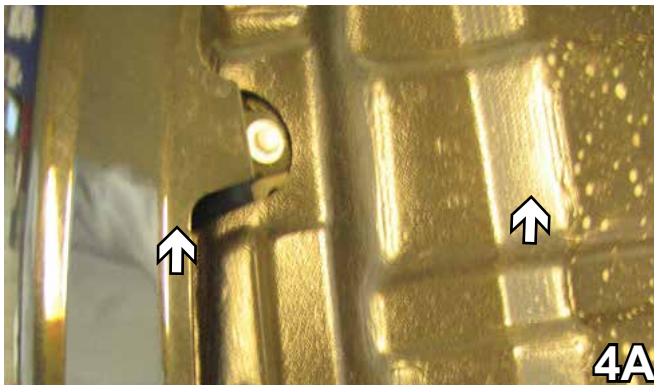
2. On the passenger side, push in to remove three plastic push pins. Set push pins aside to be reinstalled later.



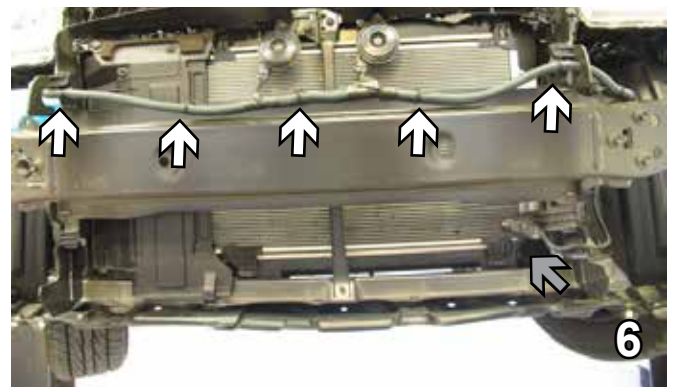
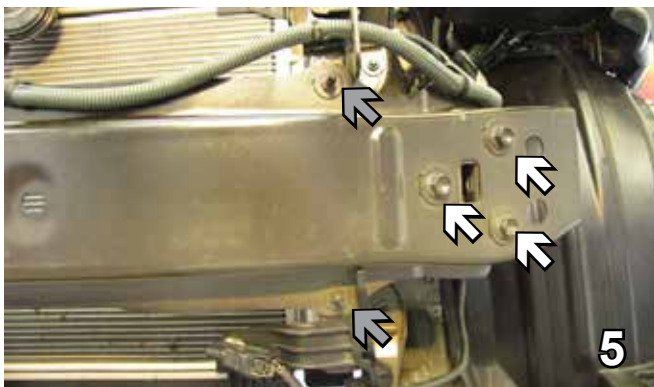
3. Just forward of the front tire on bottom side of fascia at the top is a push pin, push it in and it will pop out. Using a flat screwdriver, turn the screw pin (grey arrow) 90° and the screw will pop out. Do this to both sides of vehicle. Set pins aside to be reinstalled later.

BX3778

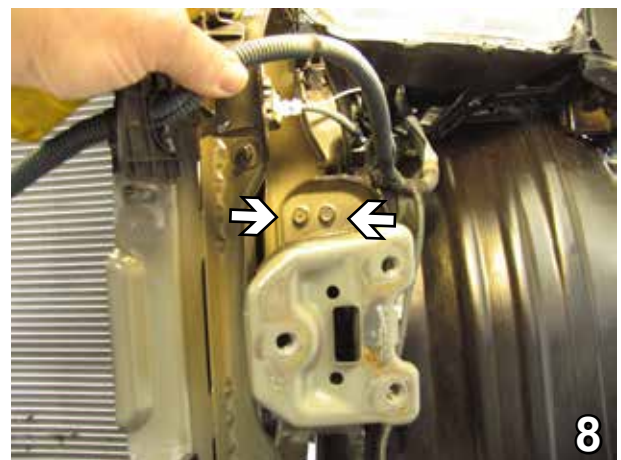
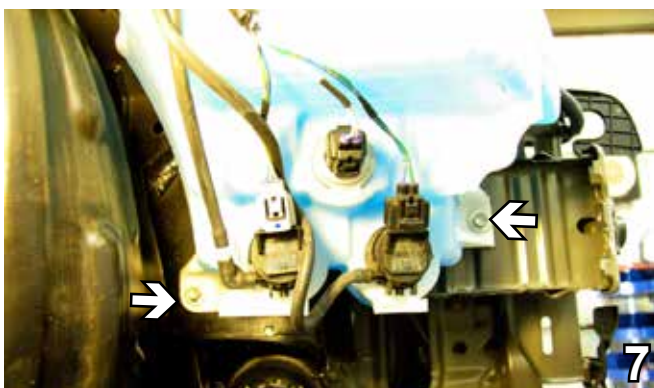
2008-14 Scion XD Installation Instructions



4. Remove eight metric bolts from lower edge of fascia all the way around using a 10MM socket. Pull fascia corners out to the side of the vehicle on both sides, then forward. Set aside fascia and bolts aside carefully for later reinstallation.



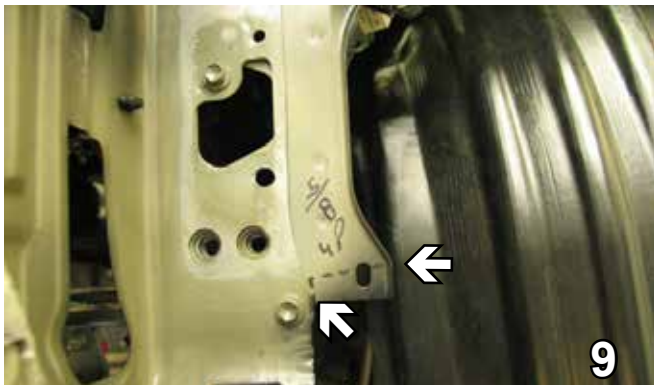
5. Using a 14MM socket, remove three bolts from the bumper core. Using a 10MM socket, remove two bolts (grey arrows). Do this on both sides. Set bolts aside for later reinstallation.
6. Unhook and pull out the five hose clamps. On the driver's side, disconnect the sensor wires and hoses. Set clamps aside for later reinstallation.



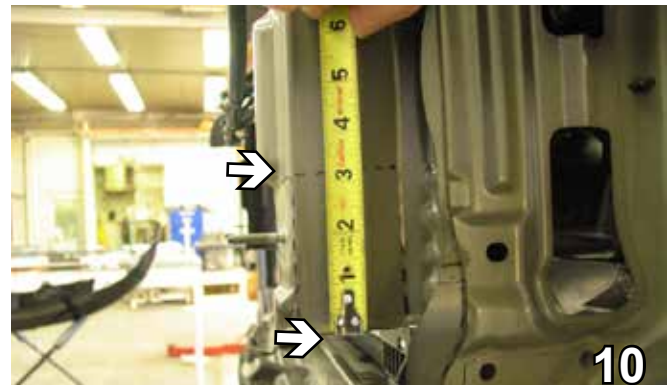
7. Using a 10MM socket, remove one bolt from each side of washer reservoir. Set aside for later reinstallation.
8. Using a 14MM socket, remove two bolts from above and below the horn. Do this on both sides. Set aside for later reinstallation.

BX3778

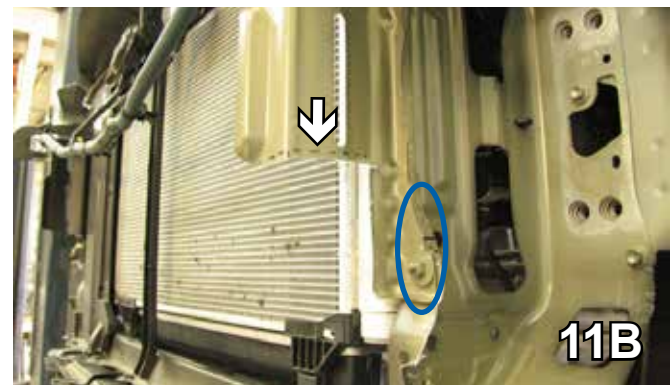
2008-14 Scion XD Installation Instructions



9. On the driver's side after the horn is removed, using a reciprocating saw, trim up 5/8" up and across.



10. Using a reciprocating saw, trim up 3 1/4", follow the seam up and connect straight across.



11. Using a reciprocating saw, cut a notch starting 1" up from the bottom and continuing 3 1/2" up (11A) in the lower frame support webbing and cut it out. Also cut out the area enclosed in the oval in 11B. Do this on both sides.



12. Showing the lower frame support webbing after the trimming has been completed.

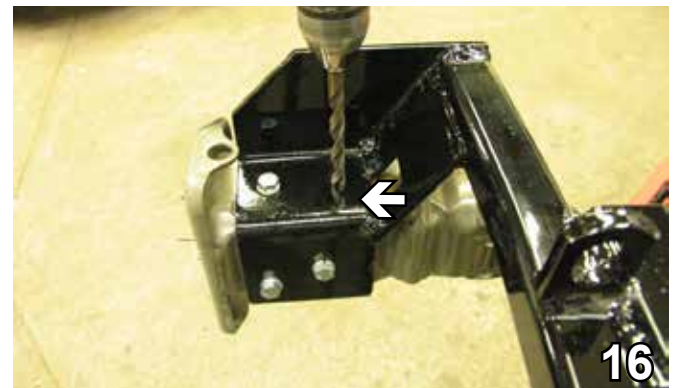
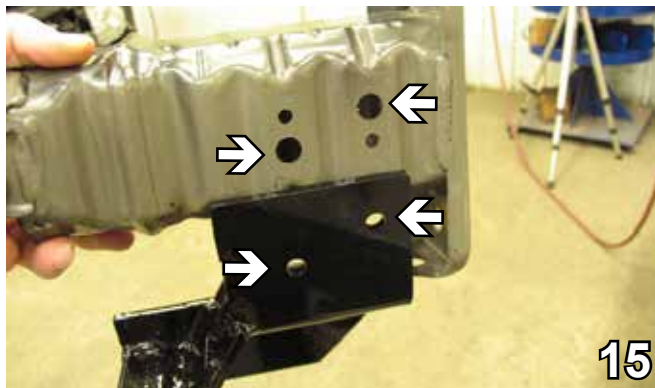


13. On the bottom side of the bumper, using a reciprocating saw trim back 2". Do this on both sides.

Using a good quality paint, spray cut edges of frame to prevent rusting.



14. Below the frame, cut the plastic 3" down and 1 3/4" across.



15. Line up the two big existing holes in the frame extension with the side baseplate holes. Start the 3/8 x 1 1/2" bolts. Do this on both sides.

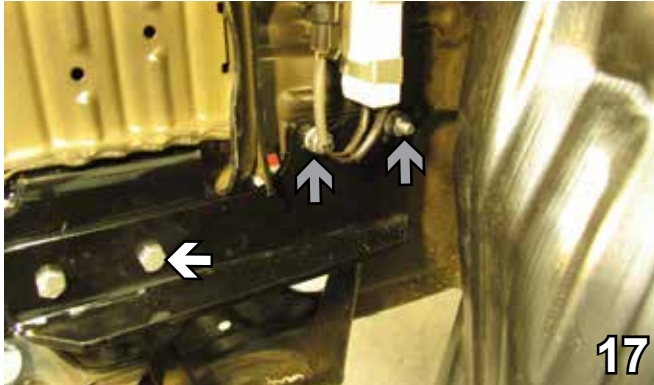
16. Using the 13/32" drill bit, drill the bottom two holes using the baseplate as a template. Insert and tighten the 3/8 x 1 1/4" bolts and 3/8" lock washer with a 1" nut plate in the bottom first, then tighten the side bolts. Tighten all bolts with Loctite red. Do this on both sides.

BE SURE TO USE LOCTITE® RED ON ALL BOLTS BEFORE TIGHTENING. TIGHTEN ALL BOLTS ACCORDING TO THE TORQUE CHART ON THE FRONT PAGE OF THESE INSTRUCTIONS OR ON PAGE 3 OF THE BASEPLATE TOWING GENERAL INSTRUCTIONS.

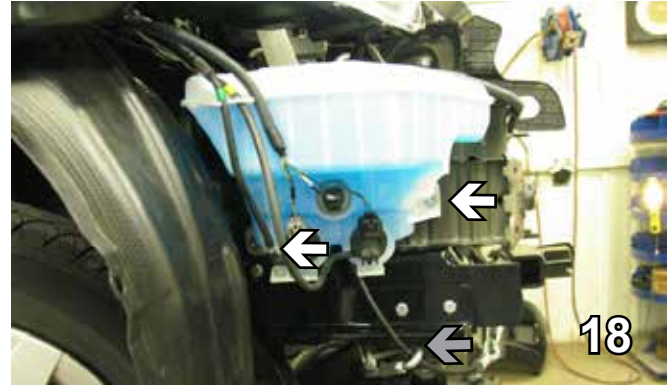
When using power drills be aware of the dangers of torque and drill bit length.

BX3778

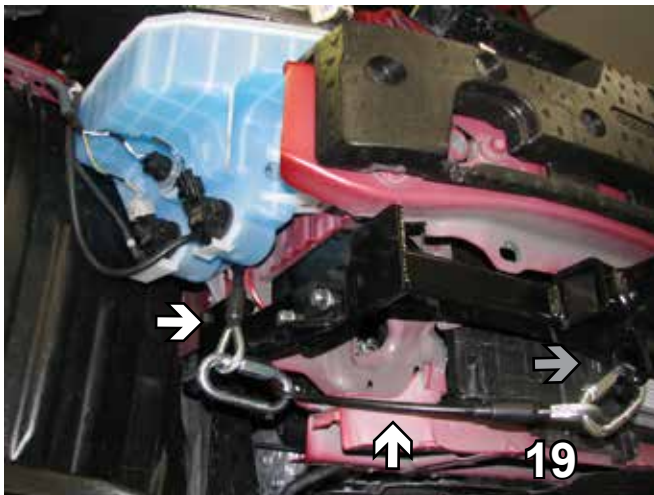
2008-14 Scion XD Installation Instructions



17. Put the side plate on with one 3/8 x 1" bolt (white arrow) with 3/8" lock washer and 3/8" hex nut, while drilling the back two holes with the 13/32" drill bit. Loosen the first bolt, insert 3/8 x 1 1/2" bolt, the spacer plate and 3/8" lock washer with 3/8" hex nut in the back and tighten. Then tighten the front two bolts. On the driver's side, the bolts protrude to the outside.



18. Reattach washer reservoir (white arrows).



19. Attach the permanent baseplate safety cables to the provided convenience link on the baseplate (grey arrow). The photo above shows the recommended installation of the cables to frame of vehicle (white arrow). Additional options may interfere with suggested mounting; in this case secure the cables to a solid piece of the frame as described in the instructions included with the permanent baseplate safety cables. Be sure the safety cables do not rub against any hoses

or moving parts. Do this to both sides of the vehicle.

Be sure that **ALL** electrical connections are plugged in properly and functioning **BEFORE** installing the fascia.

20. Reinstall hoses, sensor wires, hose clamps, fascia, bolts and push pins.

Install the tow bar and safety cables according to the instructions provided in their packages. When demonstrating to customer, be sure to include all original content and packages. Do **NOT** substitute other devices if the tow bar pins and clips are misplaced.



BX3778

2008-14 Scion XD Installation Instructions



Shown without removable tabs installed.



Shown with removable tabs installed.



2010 Shown with removable tabs installed.

DEALER or INSTALLER:
Be certain the user receives the
instruction sheets for their products.

CUSTOMER SERVICE COMMITMENT

Blue Ox is committed to providing you with exceptional customer care throughout your lifetime with our products. Our team is here to assist you with any questions you may have regarding the performance of your product. Simply call 1-402-385-3051 and you can speak with our customer care team.

Additionally, please visit our website to see which rallies our Destination America team will be attending. For a nominal fee, our service technician will service your towing system to ensure it's in proper working condition. Also, as a commitment to our customers, should you visit our factory you can stay at our full service Blue Ox campground at no charge along with enjoying a factory tour.

Again, thank you for being our customer and for the confidence you have shown in the performance of our products. It is because of customers like you we enjoy the success we have today.

If the baseplate is in an accident, it must be replaced. **DO NOT** use it again! An accident can cause unseen damage and using it again could result in more damage or serious injury. **DO NOT** use the baseplate if it is damaged or missing parts.



General Information

1. Ensure that your product(s) are registered online at www.blueox.com. It is crucial to register your product(s) so that you may be alerted of product offerings, updates, upgrades, maintenance and safety bulletins, and/or recalls.
2. **It is the owner's responsibility to inspect all towing equipment for cracked welds, missing or worn parts and loose bolts before each towing trip.** Be sure to use Loctite® Red on all bolts and tighten to the recommended specifications.
3. **It is the owner's responsibility to hook up all towing equipment per manufacturer's instructions/recommendations.**
4. Remove the attachment tabs when not in use (if applicable).

Notice To Baseplate Installer

1. It is YOUR responsibility to watch for:

- Oil cooler and air conditioner lines
- Electrical wires and hoses
- Missing parts or attaching points on the frame

** If the baseplate is improperly installed and is against a wire or hose, it could cause fluid leaks or electrical shorts some time after the actual baseplate installation.

Permanent Baseplate Safety Cable Installation

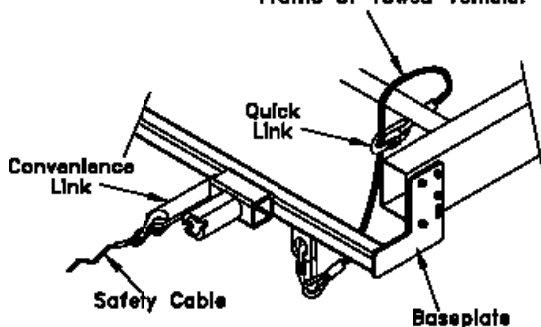
Permanent baseplate safety cables are strongly recommended when towing a vehicle with a tow bar. The principle function of the permanent baseplate safety cables is to prevent the towed vehicle from breaking loose in the event the connection between the frame of the towed vehicle and the baseplate fails or becomes disconnected. The cables must be connected from the baseplate to the frame rail or cross member of the vehicle's frame. The illustrations below show the possible arrangements recommended by Blue Ox®. Each permanent baseplate safety cable must have an adequate weight rating for the towing system. The weight rating of the two (2) cables together will not qualify.

Do not mount the permanent baseplate safety cables against wires, hoses or brake lines.

These permanent baseplate safety cables should remain installed as long as the baseplate is installed on the vehicle. Permanent baseplate safety cables are to be used in conjunction with, and NOT a replacement for legally required safety cables attaching the towed vehicle to the towing vehicle.

OPTION #1

Permanent Baseplate Safety Cables to Cross Member or Frame of Towed Vehicle.



OPTION #2

Permanent Baseplate Safety Cables to Cross Member or Frame of Towed Vehicle.

