



**BX3216 Installation Instruction
1999 Pontiac Bonneville SE**

Serial No.

The bumper molding, head lights and lower rock guards need to be removed for the baseplate installation. It will also be necessary for holes to be drilled. Trimming of rock guards is necessary.

1. The baseplate mounts to the bumper shock mounts under the headlights and the engine sub-frame using seven bolts supplied with the baseplate.
2. With a 10mm wrench remove the headlights and their mounts. Remove the electrical connectors and the bulbs and set the headlights aside.
3. There are plastic push pins that hold a rubber pieces in place between the radiator and the area under the headlights. Remove these pins and the rubber pieces. These will be trimmed and replaced after the upper cross bar is installed.
4. Remove the bottom plastic molding which is attached to the bumper.
5. Remove the two bolts that connect the tubular shock to the frame. Do this one side at a time so the bumper will stay in the same position on the car. Bolt the attachment end plate (Item 3) as shown in the diagram (Items 8, 11 14 and 10). Do not tighten completely. Repeat for the opposite side.
6. Bolt the upper attachment tube (Item 4) to the lower holes of the attachment end plate (Item 3) using Items 7, 12 and 9. To align the holes, you can loosen the end plates and slide them in or out as needed. When all the bolts are started, apply Loctite and tighten completely. Tighten the bumper shock mount bolts completely.
7. Bolt the front upper mounts on the baseplate to the attachment tube (Items 7, 9 and 12). The two braces will extend back to the engine frame. Drill the mounting holes in the frame for these braces. Notch the plastic belly pan around the braces to allow contact. Do not "sandwich" the plastic belly pan between the brace and the frame. If you do, you may not be able to keep the bolt tight.
8. With the plastic notched, mark and drill the holes in the sub frame. If you use the baseplate as a template, tighten the upper mount bolts completely before drilling. When the holes are drilled. Bolt the braces to the frame (Items 2, 13 and 6). You will have to "fish" the wire nut plates (Item 2) into the frame from the front for the outside braces. Use Loctite on each bolt and tighten completely.
9. With the baseplate completely secure, the plastic molding can be returned. The bottom molding needs to be notched where the braces meet the molding. The braces may cover existing bolt holes for the molding. If so, the remaining bolts will hold the molding sufficiently.
10. Notch and replace the rubber pieces beside the radiator. Replace the headlights and their mounts. Check all bolts to make sure they are tight.
11. Install the tow bar and safety cables according to the instructions included in their packages.
12. Do not substitute other devices if the tow bar pin and clip are lost.
13. DEALER OR INSTALLER: BE CERTAIN THE USER RECEIVES THE INSTRUCTION SHEET.

Automatic

Tools Required

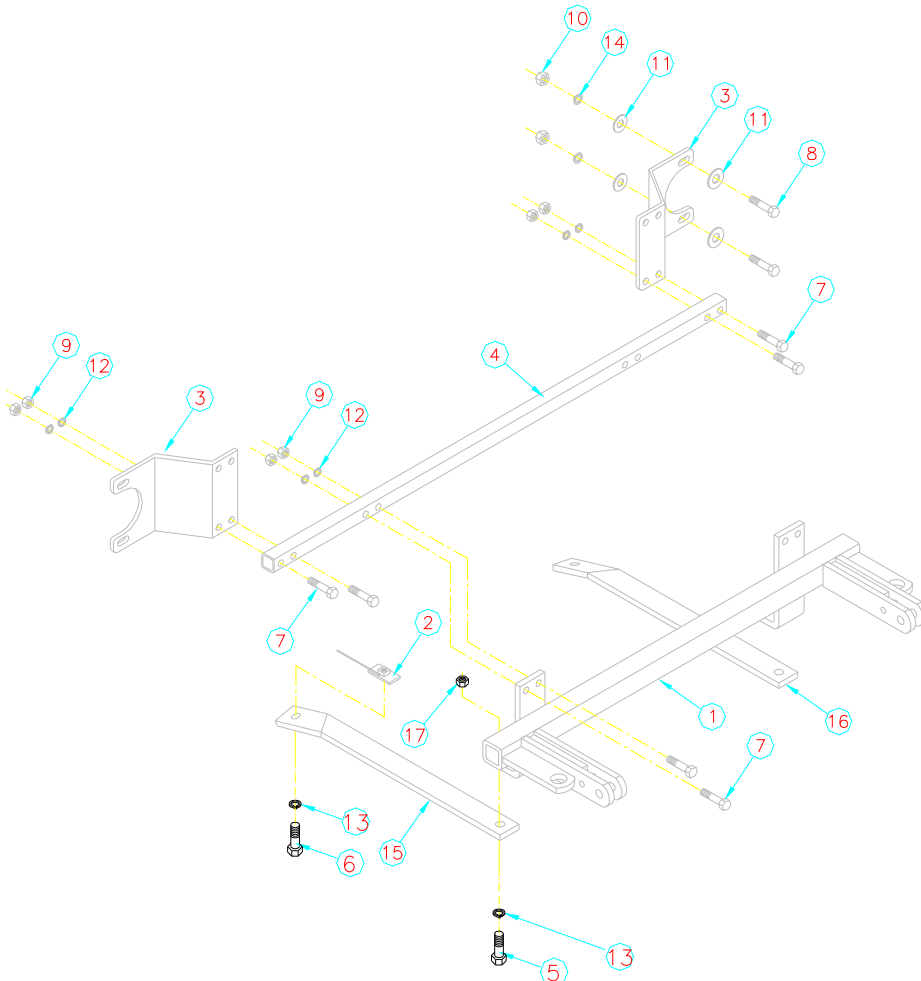
Flat Screwdriver
 9/16" Wrench
 7mm Wrench
 17/32" Drill Bit

Utility Knife
 9/16" Socket
 3/4" Wrench
 13mm Wrench

Drill
 10mm Wrench
 3/4" Socket
 Loctite Blue

Parts List

Ref. No.	Qty.	Part No.	Description
1	1	61-5341	Baseplate, BX3216
2	2	61-5342	1/2" Nut Plate with Wire
3	2	101-1532	Attachment End Plates
4	1	107-2003	Upper Attachment Tube
5	2	201-0051	1/2"-13 x 1 1/2" Hex Bolt, Grade 5
6	2	201-0068	1/2"-13 x 1 3/4" Hex Bolt, Grade 5
7	8	201-0404	3/8"-16 x 1 3/4" Hex Bolt, Grade 5
8	4	201-0418	8mm -1.25 x 35mm Hex Bolt
9	8	202-0003	3/8"-16 Hex Nut
10	4	202-0118	8mm-1.25 Hex Nut
11	8	203-0003	8mm Flat Washer
12	8	203-0010	3/8" Lock Washer
13	4	203-0012	1/2" Lock Washer
14	4	203-0102	8mm Lock Washer
15	1	102-5750	Brace, Passenger Side, BX3216
16	1	102-5751	Brace, Drivers Side, BX3216
17	2	202-0005	1/2"-13 Hex Nut
	2	226-0046	Baseplate Safety Cable, 36" CL III (Not Shown)
	4	229-0359	Quicklink, 3/8, ZP (Not Shown)



General Information

1. Ensure that your product(s) are registered online at www.blueox.com. It is crucial to register your product(s) so that you may be alerted of product offerings, updates, upgrades, maintenance and safety bulletins, and/or recalls.
2. **It is the owner's responsibility to inspect all towing equipment for cracked welds, missing or worn parts and loose bolts before each towing trip.** Be sure to use Loctite® Red on all bolts and tighten to the recommended specifications.
3. **It is the owner's responsibility to hook up all towing equipment per manufacturer's instructions/recommendations.**
4. Remove the attachment tabs when not in use (if applicable).

Notice To Baseplate Installer

1. It is YOUR responsibility to watch for:

- Oil cooler and air conditioner lines
- Electrical wires and hoses
- Missing parts or attaching points on the frame

** If the baseplate is improperly installed and is against a wire or hose, it could cause fluid leaks or electrical shorts some time after the actual baseplate installation.

Permanent Baseplate Safety Cable Installation

Permanent baseplate safety cables are strongly recommended when towing a vehicle with a tow bar. The principle function of the permanent baseplate safety cables is to prevent the towed vehicle from breaking loose in the event the connection between the frame of the towed vehicle and the baseplate fails or becomes disconnected. The cables must be connected from the baseplate to the frame rail or cross member of the vehicle's frame. The illustrations below show the possible arrangements recommended by Blue Ox®. Each permanent baseplate safety cable must have an adequate weight rating for the towing system. The weight rating of the two (2) cables together will not qualify.

Do not mount the permanent baseplate safety cables against wires, hoses or brake lines.

These permanent baseplate safety cables should remain installed as long as the baseplate is installed on the vehicle. Permanent baseplate safety cables are to be used in conjunction with, and NOT a replacement for legally required safety cables attaching the towed vehicle to the towing vehicle.

OPTION #1

Permanent Baseplate Safety Cables to Cross Member or Frame of Towed Vehicle.



OPTION #2

Permanent Baseplate Safety Cables to Cross Member or Frame of Towed Vehicle.

