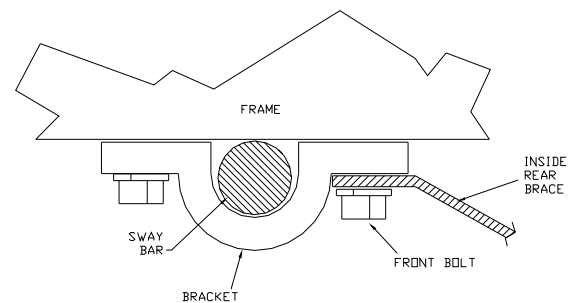




BX2902 Installation Instructions 1999-03 Land Rover Discovery II

The weight of this vehicle is near the 5000 lb. Class III rating limitations and a Class IV rated tow bar should be used. The bumper needs to be removed to install the baseplate. If the vehicle has a brush guard, it is removed and not reinstalled, for installation of the baseplate. The lower plastic fascia needs to be trimmed so the attachment tabs are exposed.

1. Looking up under the front bumper notice the aluminum pieces extending from the frames. Remove the four bolts (13mm) that hold the bumper to the aluminum extensions.
2. Remove the tubing from the backside of each fog light.
3. Remove the Phillip screws from each fender well molding directly in front of the front tires and the lower part of the bumper fascia.
4. Pull fender well molding out enough to locate and loosen the Hex bolt (13mm) that is inside the fascia molding which holds the bumper and fascia (one on each side) to the frame.
5. From where the tubing for the fog lights extend up locate a 13mm Hex head bolt holding the bumper to the frame of the vehicle. Loosen this bolt enough so the bumper can be pulled forward and removed from a slot.
6. Pull the bumper forward enough to locate the electrical wiring for the lights and disconnect. Also remove the hose connected to the windshield washer reservoir. Remove the whole bumper and fascia from the vehicle.
7. Remove the front tubular cross piece exposed once the bumper is off. The bolts will be used with the baseplate.
8. The baseplate will bolt to the same holes used for tubular cross piece using existing bolts. Thread the bolts in by hand.
9. The inside braces (on the baseplate) extend back to the front bolts (remove these bolts) on the molded brackets for the sway bars. Use the bolts and washers included in the bolt bag to fasten the baseplate to the brackets. Tighten all bolts according to the torque chart in the General Instruction Sheet.
10. Replace the bumper molding and notch where necessary to allow for the attachment tabs and convenience links. Replace the electrical wiring and hoses from above steps.
11. **DEALER OR INSTALLER: BE CERTAIN THE USER RECEIVES THE INSTRUCTION SHEET.**



Automatic

Tools Required

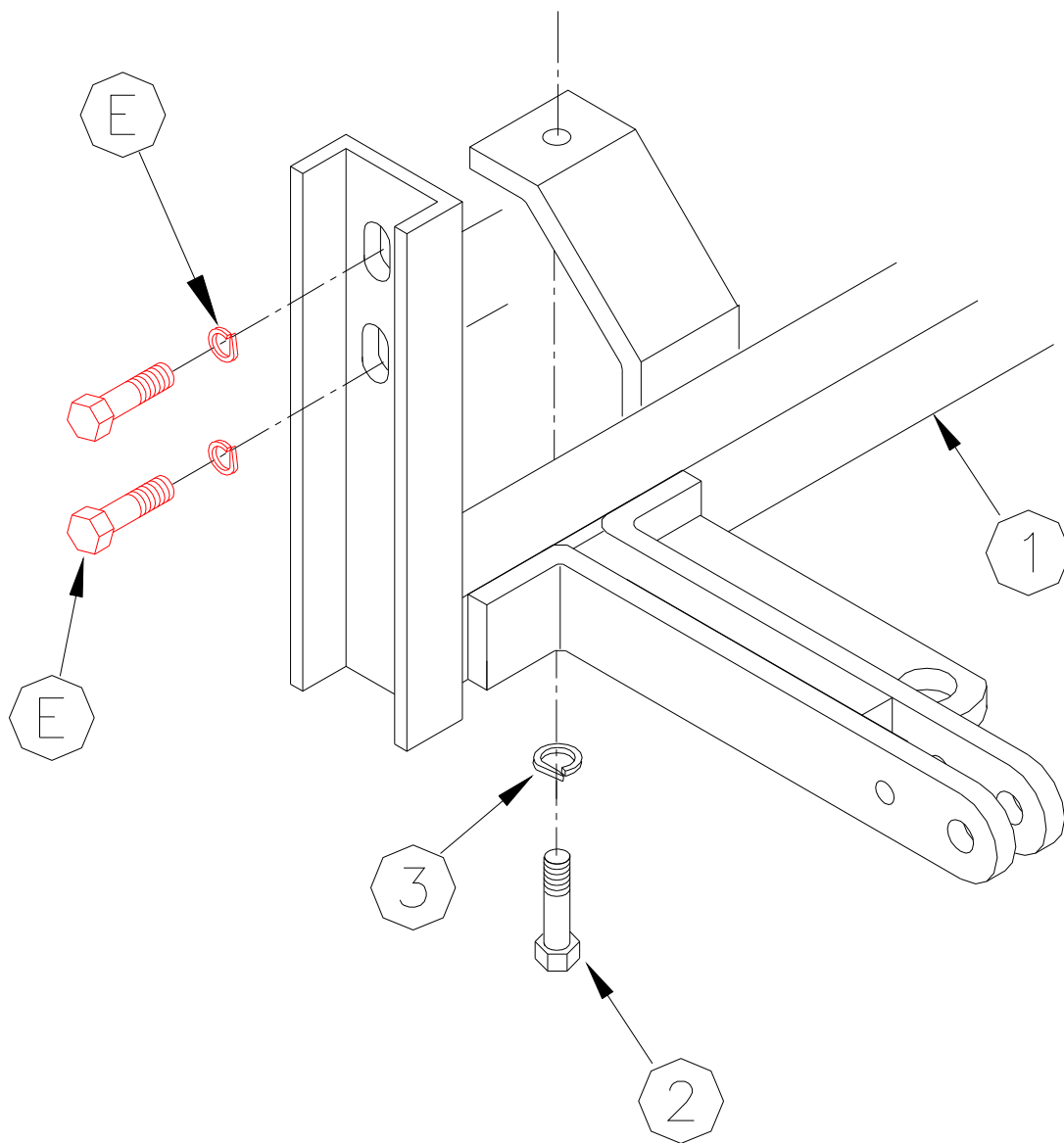
13MM Wrench
3/4" Wrench

17MM Wrench
Flathead Screwdriver

18MM Wrench
Loctite

Parts List

Ref. No.	Qty.	Part No.	Description
1	1	61-5401	Baseplate, BX2902
2	2	201-0410	10mm-1.5 x 35mm Hex Bolt, Grade 8.8
3	2	203-0104	10mm Lock Washer
E	4	xxx-xxxx.....	Existing Bolts



General Information

1. Ensure that your product(s) are registered online at www.blueox.com. It is crucial to register your product(s) so that you may be alerted of product offerings, updates, upgrades, maintenance and safety bulletins, and/or recalls.
2. **It is the owner's responsibility to inspect all towing equipment for cracked welds, missing or worn parts and loose bolts before each towing trip.** Be sure to use Loctite® Red on all bolts and tighten to the recommended specifications.
3. **It is the owner's responsibility to hook up all towing equipment per manufacturer's instructions/recommendations.**
4. Remove the attachment tabs when not in use (if applicable).

Notice To Baseplate Installer

1. It is YOUR responsibility to watch for:

- Oil cooler and air conditioner lines
- Electrical wires and hoses
- Missing parts or attaching points on the frame

** If the baseplate is improperly installed and is against a wire or hose, it could cause fluid leaks or electrical shorts some time after the actual baseplate installation.

Permanent Baseplate Safety Cable Installation

Permanent baseplate safety cables are strongly recommended when towing a vehicle with a tow bar. The principle function of the permanent baseplate safety cables is to prevent the towed vehicle from breaking loose in the event the connection between the frame of the towed vehicle and the baseplate fails or becomes disconnected. The cables must be connected from the baseplate to the frame rail or cross member of the vehicle's frame. The illustrations below show the possible arrangements recommended by Blue Ox®. Each permanent baseplate safety cable must have an adequate weight rating for the towing system. The weight rating of the two (2) cables together will not qualify.

Do not mount the permanent baseplate safety cables against wires, hoses or brake lines.

These permanent baseplate safety cables should remain installed as long as the baseplate is installed on the vehicle. Permanent baseplate safety cables are to be used in conjunction with, and NOT a replacement for legally required safety cables attaching the towed vehicle to the towing vehicle.

OPTION #1

Permanent Baseplate Safety Cables to Cross Member or Frame of Towed Vehicle.



OPTION #2

Permanent Baseplate Safety Cables to Cross Member or Frame of Towed Vehicle.

