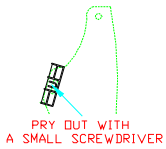




## BX2901 Installation Instructions 1999-02 Lexus RX300 (5 Door Sport Utility Vehicle)

The plastic bumper needs to be removed and holes need to be drilled to install baseplate. It may be easier to install the baseplate by removing the headlights but is not necessary.

1. Remove the small center plastic grill ( in front of radiator ) by removing the seven Phillips screws.
2. Remove the four Hex bolts (10mm socket) from the middle of the bottom bumper plastic and the plastic rock guard/ belly pan. Also remove the four Hex bolts from the rear of the rock guard/belly pan and the four lower outside Hex bolts (10mm Socket)



3. Reach behind the bumper molding just in front of the tires and remove the Hex bolt (10mm socket) connecting the fenders to the bumper molding.

4. Looking through the front bumper molding (drivers side) locate and release the white plastic clip forward of the bolt just removed. Use a small screwdriver and pry out the middle of the clip. Once released pull the bumper out position. On the passenger side reach in from the fender well to release the clip. Once released pull the bumper out and off the

car.

5. Locate and remove the thermal sensor from the metal bumper (drivers side area). It needs to be moved inboard once the baseplate has been installed.
6. Approximately 1 inch outboard from the slotted hole where the sensor was fastened is a hole (bottom of metal bumper). Drill this hole out to 3/8".



7. Feed the 3/8" bolt plate with wire (Item 2) through the lower channel of the metal bumper and into the drilled hole. Bolt the baseplate to metal bumper, hand tighten only.

8. Center the baseplate (Item 1) on the bumper and mark the passenger side hole (bottom of the bumper). **Note: Before drilling make sure the baseplate is centered on the car.** Drill a 3/8" hole and feed the 3/8" bolt plate (Item 2) with wire through lower channel into the 3/8" hole and baseplate brace, hand tighten only.



9. Bolt the braces (Items 10) to the outside holes on the baseplate (Item 1) using 1/2-13 x 1 1/2" Hex bolt and hardware (Items 8, 4 and 5). As shown in diagram on page 2. Thread nuts slightly so braces are loose.
10. Sandwich the tow hooks between the rear supports (Item 11) and the braces (Item 10). Be sure to place two of the spacers (Item 9) inside of the tow hook before bolting the pieces together. Use the 1/2-13 x 1 3/4" bolts, nut and lock washer (Items 3, 4 and 5).

# Automatic

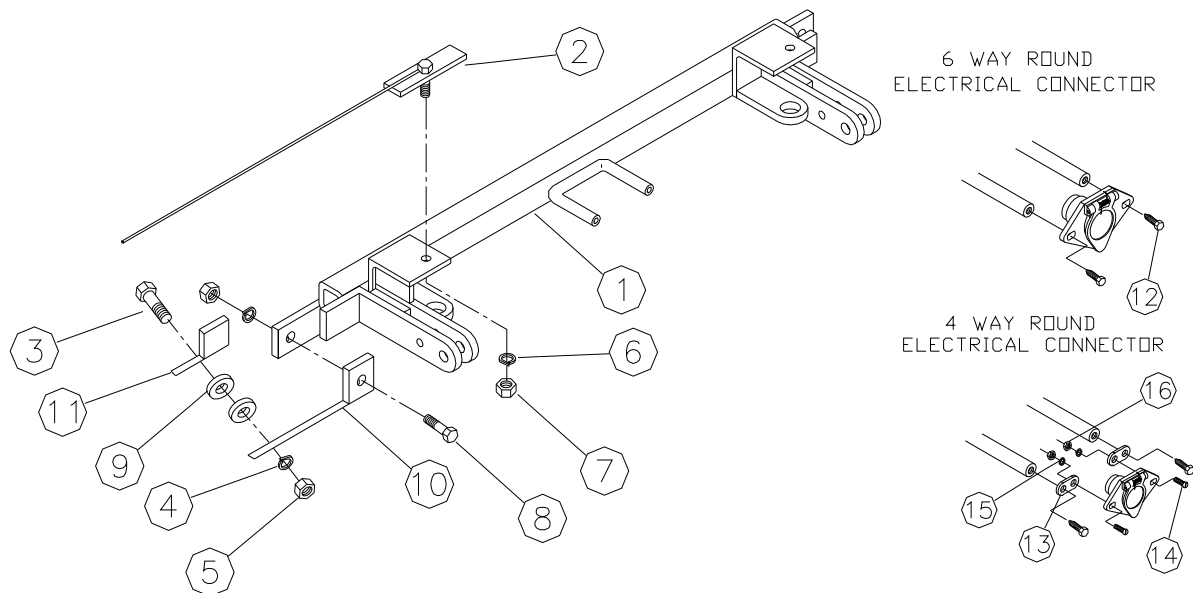
11. Dimensional variations between otherwise identical cars can be considerable. While the location and size of the holes in the baseplate were designed to allow for easy installation, it may be necessary to file a hole slightly to allow a bolt to clear. Once both side braces and center braces have been started apply Loctite to each bolt and torque bolts according to the Bolt Torque Chart in the General Instruction Sheet.
12. The sensor which was removed in Step 5 can now be fastened to bumper. Drill a 3/8" hole inboard of the baseplates braces and refasten sensor using existing clip.
13. Replace the rock guard and plastic bumper
14. DEALER OR INSTALLER: BE CERTAIN THE USER RECEIVES THE INSTRUCTION SHEET.

### Tools Required

3/4" Socket	9/16" Socket	10mm Socket
Short Extension	3/4" Socket	3/4" Wrench
Loctite Blue	3/8" Drill Bit	Small Flat Screwdriver

### Parts List

Ref. No.	Qty.	Part No.	Description
1	1	61-5330	Weldment, Baseplate, BX2901
2	2	61-5331	Weldment, 3/8" Bolt Plate with Wire
3	2	201-0068	1/2-13 x 1 3/4 Hex Bolt, Grade 5
4	4	203-0012	1/2 Lock Washer
5	4	202-0005	1/2-13 Hex Nut, Grade 5
6	2	203-0010	3/8 Lock Washer
7	2	202-0003	3/8-16 Hex Nut, Grade 5
8	2	201-0051	1/2-13 x 1 1/2 Hex Bolt, Grade 5
9	4	102-5738	Spacer, BX2901
10	2	102-5730	Brace, BX2901
11	2	102-5731	Support Brace, BX2901
12	2	201-0979	#12-14 x 1" Self Drilling Screw, ZP
13	2	101-5822	Adapter, 4 Way Connector
14	2	201-0192	#10-32 x 1/2 Slot Round Head Screw
15	2	203-0054	#10 Lock Washer
16	2	202-0047	#10-32 Hex Nut
	2	226-0046	Baseplate Safety Cable, 36" CL III (Not Shown)
	4	229-0359	Quicklink, 3/8, ZP (Not Shown)



# General Information

1. Ensure that your product(s) are registered online at [www.blueox.com](http://www.blueox.com). It is crucial to register your product(s) so that you may be alerted of product offerings, updates, upgrades, maintenance and safety bulletins, and/or recalls.
2. **It is the owner's responsibility to inspect all towing equipment for cracked welds, missing or worn parts and loose bolts before each towing trip.** Be sure to use Loctite® Red on all bolts and tighten to the recommended specifications.
3. **It is the owner's responsibility to hook up all towing equipment per manufacturer's instructions/recommendations.**
4. Remove the attachment tabs when not in use (if applicable).

## Notice To Baseplate Installer

### 1. It is YOUR responsibility to watch for:

- Oil cooler and air conditioner lines
- Electrical wires and hoses
- Missing parts or attaching points on the frame

\*\* If the baseplate is improperly installed and is against a wire or hose, it could cause fluid leaks or electrical shorts some time after the actual baseplate installation.

## Permanent Baseplate Safety Cable Installation

Permanent baseplate safety cables are strongly recommended when towing a vehicle with a tow bar. The principle function of the permanent baseplate safety cables is to prevent the towed vehicle from breaking loose in the event the connection between the frame of the towed vehicle and the baseplate fails or becomes disconnected. The cables must be connected from the baseplate to the frame rail or cross member of the vehicle's frame. The illustrations below show the possible arrangements recommended by Blue Ox®. Each permanent baseplate safety cable must have an adequate weight rating for the towing system. The weight rating of the two (2) cables together will not qualify.

***Do not mount the permanent baseplate safety cables against wires, hoses or brake lines.***

These permanent baseplate safety cables should remain installed as long as the baseplate is installed on the vehicle. Permanent baseplate safety cables are to be used in conjunction with, and NOT a replacement for legally required safety cables attaching the towed vehicle to the towing vehicle.

### OPTION #1

Permanent Baseplate Safety Cables to Cross Member or Frame of Towed Vehicle.



### OPTION #2

Permanent Baseplate Safety Cables to Cross Member or Frame of Towed Vehicle.

