

2011-2012 Ford Taurus
With Adaptive Cruise Control
Installation Instructions

Serial Number

Please read BOTH these Installation Instructions and the General Towing Instructions before attempting to install or operate this equipment.

1. Blue Ox® towing products and accessories are intended to be installed by Blue Ox® Dealers who are familiar with our products and have the equipment and knowledge to do “fit work.” When necessary, Blue Ox® Dealers can be found at www.blueox.com or by contacting our Customer Care Department at (402) 385-3051.

Attachment Tab Height: 13”

Attachment Tab Width: 16.5”

2. Many Blue Ox® Baseplates are designed to use existing holes and hardware to mount the baseplate to the towed vehicle. Even though bolts are there, do not assume they are adequate for baseplate mounting. Always use hardware supplied in the hardware kit or existing hardware specified in the Baseplate Towing Installation Instructions.

Bolt Torque Specifications
Torque in Foot-Pounds for Metric Bolts

Bolt Size	Grade 8.8	Grade 10.9
6MM	6	8
8MM	16	22
10MM	31	40
12MM	54	70
14MM	89	117

Confirm the towability and pre-towing procedures for your vehicle with the owner’s manual or contact the vehicle’s manufacturer for specific towing procedures.

Bolt Torque Specifications
Torque in Foot-Pounds for Inch Bolts

Bolt Size	Grade 5	Grade 8
1/4”	10	14
5/16”	19	29
3/8”	33	47
7/16”	54	78
1/2”	78	119
5/8”	154	230



If the front of your vehicle looks different than this, call us at (402) 385-3051.

! WARNING

Failure to read and follow these instructions could result in separation of the towed vehicle from the tow bar, causing property damage, loss of towed vehicle, personal injury or death.

BX2629

2011-2012 Ford Taurus

With Adaptive Cruise Control

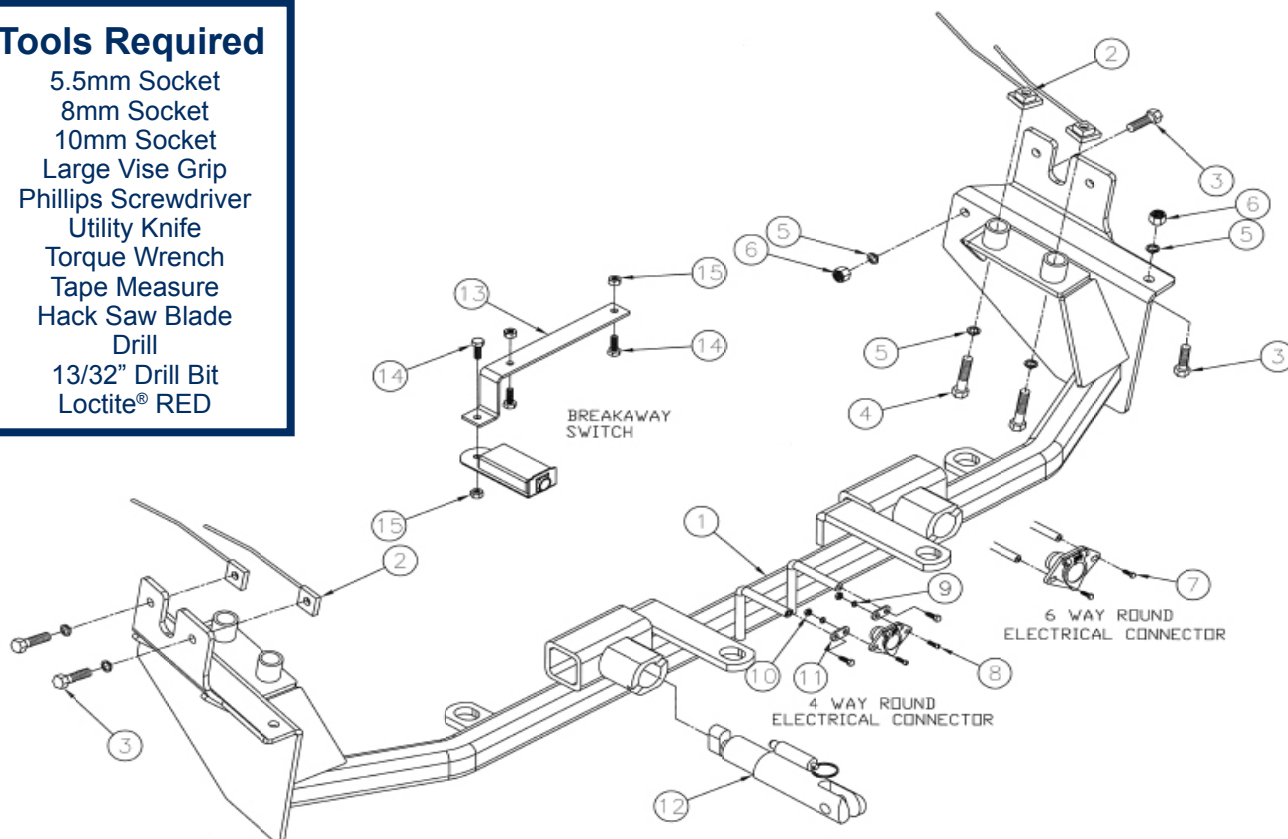
Installation Instructions

Parts List

Ref. No.	Qty.	Part #	Description
1	1	61-6870	WLDM'T, BP, BX2629
2	8	61-5208	WLD, NUT PLT, 1/4 X 1 X 1, 3/8" WITH 14"WIRE
3	8	201-0368	3/8-16 X 1 1/4 HEX HEAD BOLT,GRD. 5
4	4	201-0336	3/8-16 X 2 1/2 HEX BOLT GRD. 5 ZP
5	12	203-0010	3/8 LOCK WASHER, ZP
6	4	202-0071	3/8-16 HEX FLANGE WHIZ LOCK NUT, ZP
7	2	201-0979	#12-14 x 1" Self Drilling Screw, ZP
8	2	201-0192	10-32 X 1/2 SLOT, RD. HD. SCREW
9	2	203-0054	#10 LOCK WASHER
10	2	202-0047	#10-32 HEX NUT
11	2	101-5822	ADAPTER, 4 WAY CONNECTOR
12	2	62-3468	ATT TAB ASSY, REM, SF/LB, 1 HOLE
13	1	102-7191	BREAKAWAY BRKT, BX2629
14	3	201-0050	1/4-20 X 3/4 HEX BOLT GRD.5, ZP
15	3	202-0102	1/4-20 HEX NYL NUT, ZP
	1	293-1339	SWITCH, BREAKAWAY (2010-S) (Not Provided)
	7	203-0001	1/4 FLAT WASHER, ZP (Not Shown)
	2	226-0046	BASEPLATE SAFETY CABLE, 36" CL III (Not Shown)
	2	229-0359	QUICKLINK, 3/8, ZP (Not Shown)
	2	290-0437	RECEIVER, CAP PLUG (BLK) (Not Shown)

Tools Required

5.5mm Socket
 8mm Socket
 10mm Socket
 Large Vise Grip
 Phillips Screwdriver
 Utility Knife
 Torque Wrench
 Tape Measure
 Hack Saw Blade
 Drill
 13/32" Drill Bit
 Loctite® RED



Important:

Use only genuine factory replacement parts on your baseplate. Do **NOT** substitute homemade or non-typical parts. If a bolt is lost or in need of replacement, for your safety and the preservation of your baseplate, be sure to use a replacement bolt of the same grade (In most cases it will be Grade 5, please reference the parts list above). Replacement parts may be ordered through your nearest Blue Ox® Dealer or Distributor. Failing to follow and/or altering these installation instructions in either installation or required equipment will void the manufacturer's warranty.

BX2629

2011-2012 Ford Taurus With Adaptive Cruise Control Installation Instructions

Vehicle Weight: Due to the design of removable tabs, the RangeFinderII, Acclaim and Ambassador tow bars can not be used. Adapters, except the BX8833 and BX88151, can not be used with this baseplate.

Installation Notes: The fascia, horn, washer reservoir, adaptive cruise control module, and plastic cover are removed for installation. Drilling is required. Trimming is required.

The dimensional variations between otherwise identical vehicles can be considerable. While the baseplate was designed for easy installation, it may be necessary to tailor the baseplate slightly to compensate for auto manufacturer's tolerances. These minor adjustments may include filing a hole slightly, bending electrical rods or bending end plates.

The BX8848 4-Diode Wiring Kit is recommended for this vehicle.

Handling of some cosmetic parts when installing this product may require the use of protective covers, rags, specialty tools, etc. to prevent damage.

Installation Instructions:

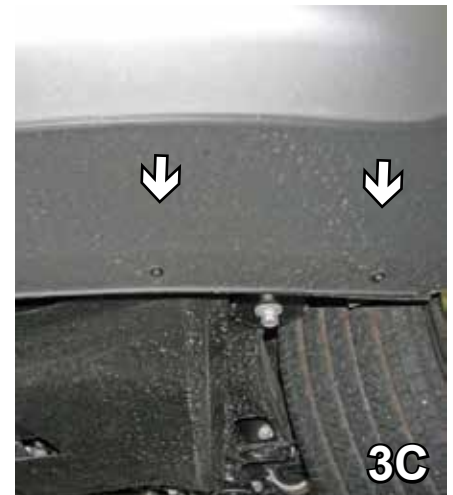
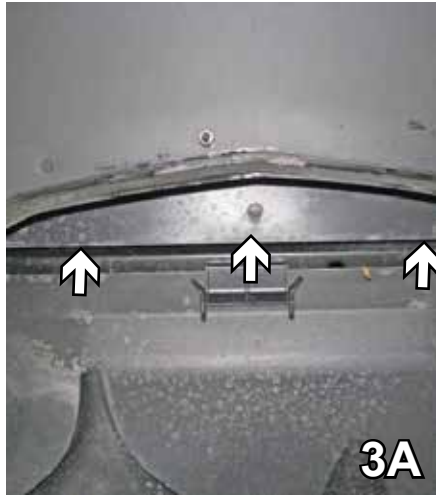


1. Using a 10MM socket, remove one metric bolt (white arrow) from the plastic on top of the fascia. Using a Phillips screwdriver, remove the two push pins (grey arrows). Do this to both sides of the vehicle. Set bolts and push pins aside to be reinstalled later.



2. Using a 5.5MM socket, remove three bolts, located just forward of the front tire. Do this to both sides of the vehicle. Set bolts aside to be reinstalled later.

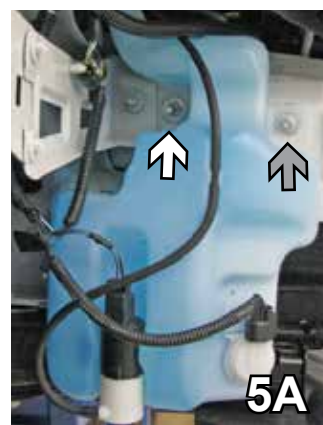
BX2629
2011-2012 Ford Taurus
With Adaptive Cruise Control
Installation Instructions



We have found two different styles of fascia connections. Please follow the steps for your style.

3. In front underneath the fascia, remove three push pins from the center (3A, white arrows). Using a 5.5MM socket, remove one bolt on each side (3B, gray arrow). Pull fascia corners out to the side of the vehicle to unsnap, then pull forward. Set fascia, pins and bolts aside carefully to be reinstalled later.

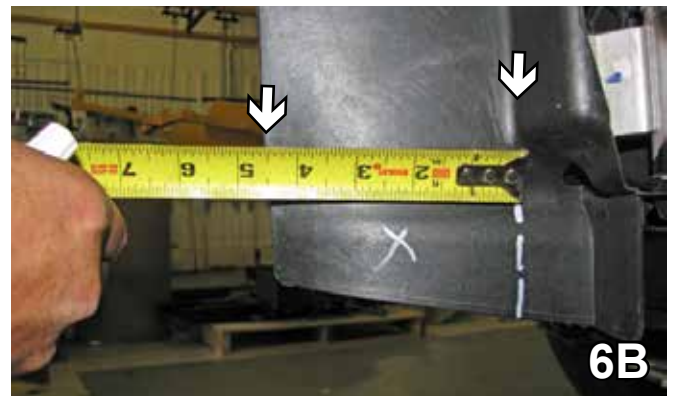
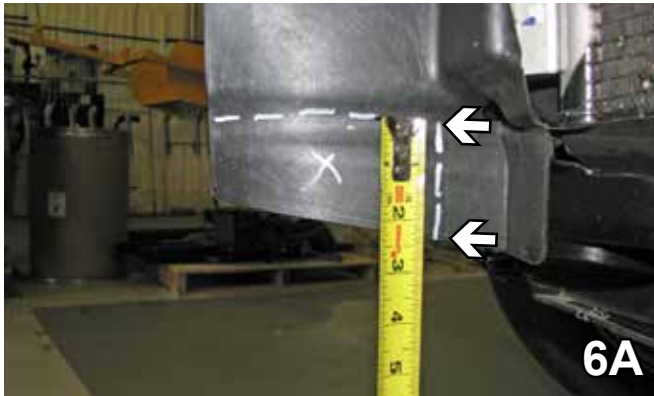
- 3C. In front underneath, using a 5.5MM socket, remove seven bolts. Pull fascia corners out to the side of the vehicle, then pull forward. Set fascia and bolts aside carefully to be reinstalled later.



4. On the driver's side, using an 8MM socket, remove the bolt holding the horn. Set the horn and bolt down by the side to be reinstalled later.

5. On the passenger side, using a 10MM socket remove the bolt from the top right side of the washer reservoir (5A, gray arrow). Using a 10MM socket, remove the two bolts on the left side (white arrows). Unplug electrical connections, disconnect hoses and plug inlets to washer reservoir. Set washer reservoir and bolts aside to be reinstalled later.

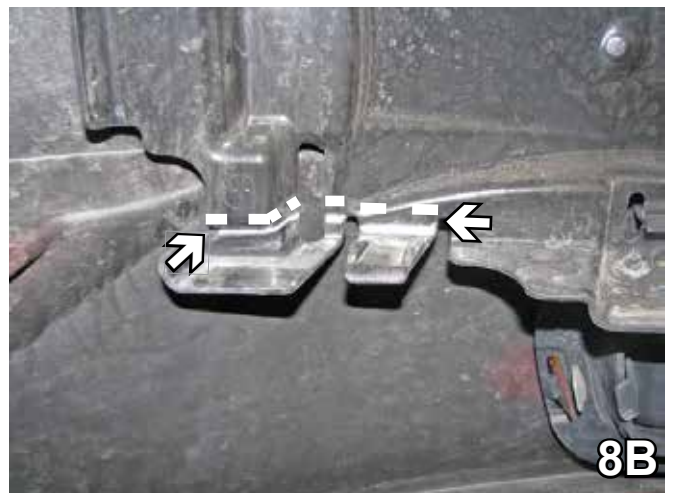
BX2629
2011-2012 Ford Taurus
With Adaptive Cruise Control
Installation Instructions



6. On the passenger side, using a hack saw blade, trim the air dam beside the radiator $2\frac{1}{4}$ " up and $4\frac{1}{2}$ " across.



7. Remove the adaptive cruise control module below the bumper on the driver's side. Unsnap the module from the front side of the bracket by pulling the module forward. Unplug and set aside to be reinstalled later.



8. On the back side of the fascia, using a utility knife, cut to the bumper bracket that moulds around the bumper. Do this on both sides.

BX2629

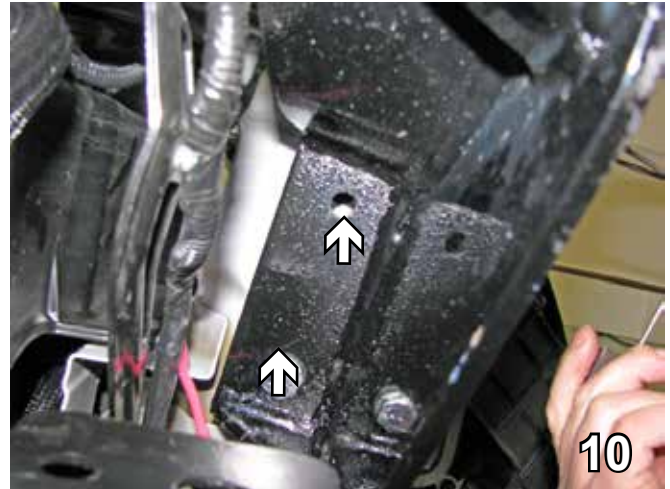
2011-2012 Ford Taurus

With Adaptive Cruise Control

Installation Instructions



9. Slide the baseplate straight up from the bottom and clamp in front. Be sure the baseplate is level with the frame, and up as far as possible.



10. Using the baseplate as a template, with a 13/32" drill bit, drill the two holes under the frame. Insert 3/8"-16 x 2 1/2" bolts into the holes with 3/8" lock washers and 3/8"-16 nut plates, tighten with Loctite Red. Do the same on both sides of the vehicle.

BE SURE TO USE LOCTITE® RED ON ALL BOLTS BEFORE TIGHTENING. TIGHTEN ALL BOLTS ACCORDING TO THE TORQUE CHART ON THE FRONT PAGE OF THESE INSTRUCTIONS OR ON PAGE 3 OF THE BASEPLATE TOWING GENERAL INSTRUCTIONS.

When using power drills, be aware of the dangers of torque and drill bit length.



11. Using the baseplate as a template, drill the remaining four holes with the 13/32" drill bit. Insert the 3/8-16 nut plates into the bumper opening (gray arrow) to align with 3/8-16 x 1 1/4" bolts and 3/8" lock washers in the top two holes (white arrows). Tighten with Loctite Red. Do this to both sides.



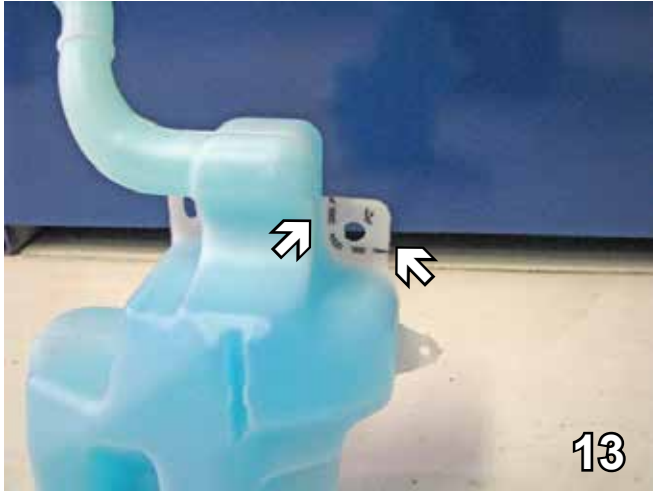
12. Secure the remaining hole to bottom of metal bumper and lower frame webbing with 3/8-16 x 1 1/4" hex bolts, 3/8" lock washer and 3/8-16 hex nuts (white arrows). Tighten with Loctite Red. Do this to both sides.

BX2629

2011-2012 Ford Taurus

With Adaptive Cruise Control

Installation Instructions



13. On the passenger side, before reinstalling the washer reservoir, use a utility knife and cut off the top right installation tab about 1 1/2" x 1 1/2". Be careful not to cut into reservoir. Reinstall the washer reservoir.

15. Attach the permanent baseplate safety cables to the provided convenience link on the baseplate. Secure the cables to a solid piece of the frame as described in the instructions included with the permanent baseplate safety cables. Be sure the safety cables do not rub against any hoses or moving parts. Do this to both sides of the vehicle.

Be sure that **ALL** electrical connections are plugged in properly and functioning **BEFORE** installing the fascia.

17. Reinstall cruise control sensor, horn and plastic cover.

Install the tow bar and safety cables according to the instructions provided in their packages. When demonstrating this to the customer, be sure to include all the contents and packages.

Do **NOT** substitute other devices if the tow bar pins and clips are misplaced.



14. Using the two existing studs on the left, reinstall the washer reservoir. Put seven 1/4" flat washers behind the washer on the top stud to offset away from the baseplate. Reconnect the hoses and plug in electrical connections.

16. **Optional:** Install the breakaway bracket underneath the bumper on the passenger side. Attach the bracket with 1/4-20 x 3/4" hex bolts and 1/4-20 hex nuts. Attach the breakaway to the bracket with a 1/4-20 x 3/4" hex bolt and 1/4-20 hex nut.



18. Hold the fascia up in front of the baseplate, mark and trim the area needed for the baseplate to come through. Reinstall the fascia. The installation of the baseplate is complete.

BX2629

2011-2012 Ford Taurus

With Adaptive Cruise Control

Installation Instructions

DEALER or INSTALLER:
Be certain the user receives the
instruction sheets for their products.



Shown without removable tabs installed.



Shown with removable tabs installed.

If the baseplate is in an accident, it must be replaced. DO NOT use it again! An accident can cause unseen damage and using it again could result in more damage or serious injury. DO NOT use the baseplate if it is damaged or missing parts.

CUSTOMER SERVICE COMMITMENT

Blue Ox is committed to providing you with exceptional customer care throughout your lifetime with our products. Our team is here to assist you with any questions you may have regarding the performance of your product. Simply call (402) 385-3051 and you can speak with our customer care team.

Additionally, please visit our website to see which rallies our Destination America team will be attending. For a nominal fee, our service technician will service your towing system to ensure it's in proper working condition. Also, as a commitment to our customers, should you visit our factory, you can stay at our full service Blue Ox campground at no charge along with enjoying a factory tour.

Again, thank you for being our customer and for the confidence you have shown in the performance of our products. It is because of customers like you we enjoy the success we have today.



© 2011 Blue Ox
One Mill Road, Industrial Park
Pender, Nebraska 68047
Phone: (402) 385-3051
Fax: (402) 385-3360
www.blueox.com

General Information

1. Ensure that your product(s) are registered online at www.blueox.com. It is crucial to register your product(s) so that you may be alerted of product offerings, updates, upgrades, maintenance and safety bulletins, and/or recalls.
2. **It is the owner's responsibility to inspect all towing equipment for cracked welds, missing or worn parts and loose bolts before each towing trip.** Be sure to use Loctite® Red on all bolts and tighten to the recommended specifications.
3. **It is the owner's responsibility to hook up all towing equipment per manufacturer's instructions/recommendations.**
4. Remove the attachment tabs when not in use (if applicable).

Notice To Baseplate Installer

1. It is YOUR responsibility to watch for:

- Oil cooler and air conditioner lines
- Electrical wires and hoses
- Missing parts or attaching points on the frame

** If the baseplate is improperly installed and is against a wire or hose, it could cause fluid leaks or electrical shorts some time after the actual baseplate installation.

Permanent Baseplate Safety Cable Installation

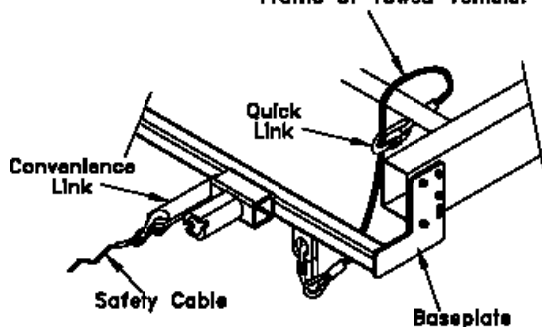
Permanent baseplate safety cables are strongly recommended when towing a vehicle with a tow bar. The principle function of the permanent baseplate safety cables is to prevent the towed vehicle from breaking loose in the event the connection between the frame of the towed vehicle and the baseplate fails or becomes disconnected. The cables must be connected from the baseplate to the frame rail or cross member of the vehicle's frame. The illustrations below show the possible arrangements recommended by Blue Ox®. Each permanent baseplate safety cable must have an adequate weight rating for the towing system. The weight rating of the two (2) cables together will not qualify.

Do not mount the permanent baseplate safety cables against wires, hoses or brake lines.

These permanent baseplate safety cables should remain installed as long as the baseplate is installed on the vehicle. Permanent baseplate safety cables are to be used in conjunction with, and NOT a replacement for legally required safety cables attaching the towed vehicle to the towing vehicle.

OPTION #1

Permanent Baseplate Safety Cables to Cross Member or Frame of Towed Vehicle.



OPTION #2

Permanent Baseplate Safety Cables to Cross Member or Frame of Towed Vehicle.

