

DEALER
BE CERTAIN
USER RECEIVES
INSTRUCTION SHEET

DEALER
BE CERTAIN
USER RECEIVES
INSTRUCTION SHEET

INSTRUCTION SHEET

1983-86 DODGE D-50 2WD & 4WD PICKUP
1983-86 MITSUBISHI 2WD & 4WD PICKUP
STYLE #1905

NOTICE

1. This Tow Bar is designed to be parallel to the ground when it is attached to both the towed and towing vehicles. If the Tow Bar is at an angle, there is a risk of damage or accident.
2. This Tow Bar has been designed to tow a manual transmission car or an automatic which has been equipped with a transmission pump, drive shaft disconnect or half shaft disconnect.
3. The transmission should be placed in neutral when towing.
4. Unlock the steering wheel to allow the front wheels of the towed vehicle to "track".
5. Be sure the car being towed is properly aligned.
6. USE SAFETY CABLE OR CHAIN (see sketch). Blue Ox Style #8805 (5ft) or #8806 (6ft) Safety Cable Kit is recommended. The shorter #8805 is normally best.
7. Adjust the coupler for proper fit to the ball (see coupler adjustment). For added security, place a lock, pin or bolt through the hole provided in the coupler locking lever.
8. Check the vehicle to vehicle clearance in a turning situation.
9. Most states require lighting at the rear of the towed car. A Blue Ox Style #8811 Wiring Kit or Style #8813 Light Bar is recommended.
10. Prior to starting on a towing trip, check to be sure all towing accessories and attachment points are secure; ie. all bolts tight and no cracked welds. This is important on all occasions but particularly on a new installation. All bolted connections and weldments on a new installation should be checked just prior to initial towing and again after 100-200 miles of towing.
11. Do Not Back Up when towing. Backing up may damage the Tow Bar assembly or the towed car's chassis.
12. Avoid sharp turns and rough terrain. Check installation after any unusual event and periodically on a long trip.
13. Do not use towed vehicle for storing luggage, etc.; you may exceed the towing capacity of the Tow Bar.

PARTS LIST

1. 1 - Tow Bar (purchased separate)
2. 1 - Base Plate
3. 2 - 1/2" diameter pins
4. 2 - hairpin clips
5. 4 - 1/2"-13 x 1-1/2" bolts grd.5
6. 4 - 1/2"-13 hex nuts
7. 4 - 1/2" lockwashers
8. 2 - spacer washers
9. 2 - washer plates
10. 2 - 3/8"-16 X 1" bolts grd.5
11. 2 - 3/8"-16 hex nuts
12. 2 - 3/8" lockwashers
13. 4 - 10mm-1.25 x 30mm bolts grd.5
14. 4 - 10mm lockwashers

TOOLS

- 14mm socket
- 3/4" socket
- 3/4" endwrench
- 2 - 9/16" endwrenches

SPECIAL NOTICE

1. Blue Ox Towing products and accessories are intended to be installed by professional installers with experience, proper equipment, and knowledge of how to do "fit" work. Installers with this background will normally be found in Hitch Shops or RV/Automotive Service Centers.
2. If the car to be towed has been in an accident, the chassis may be damaged in an area where the Base Plate attaches. It may no longer be suitable for towing. Extreme caution and careful examination are required in such a situation. It is also likely, even from a minor accident, that the installation will be more difficult due to hole alignment problems.
3. Many Blue Ox Base Plates are designed to use existing holes and hardware to mount the Base Plate to the towed vehicle. Even though the bolt is there however, do not assume it is adequate for mounting the Base Plate. Manufacturers make many changes in hardware both within and between model years. Be sure the bolt is long enough to protrude past the nut a distance no less than 1/2 the diameter of the bolt, after the Base Plate is mounted. The threads should be in "as new" condition. It is recommended that "Locktite Blue" be used. If a new bolt is required, be sure it is SAE Grade 5 or Metric 8.8.

INSTALLATION

1. The Tow Bar assembly consists of a permanently mounted Base Plate and a detachable Tow Bar.
2. The Base Plate mounts to the front underside of the vehicle using ten bolts provided; five on each side. Although all models use the same attachment points to the frame, "tie down" brackets and bumper brackets, the 2WD & 4WD trucks have different equipment at these locations and will be described separately.

1. BASE PLATE INSTALLATION - 2WD MODELS

1. Remove the metal belly pan.
2. The front wheel stabilizer bars are attached through rubber bushings to a bracket which is bolted to the frame rail with four bolts. Remove only the front two bolts from each bracket and discard.
3. Position the Base Plate so that its rear bracket holes align with the stabilizer bracket bolt holes, the Base Plate outer plate holes align with the "tie down" bracket holes and the Base Plate front bracket holes align with the holes in the bumper mount bracket located up behind the bumper and in front of the lower body trim panel. The "tie down" brackets are stamped metal brackets with a large round hole in front and a small round hole in the rear. They are welded on and protruding down from the frame rails. Positioning can be done by raising the Base Plate straight up keeping the rear brackets slightly forward until they clear the stabilizer bar ends and then push them back to align the holes.
4. When the Base Plate is in position, using Locktite or a similar product on all bolts, hand start the four 10MM bolts provided, with lockwashers into the stabilizer bracket holes.
5. Insert two of the 1/2" bolts provided through the rear hole of the "tie down" brackets aligning with the Base Plate holes and hand start a lockwasher and nut on each side.

6. Place a round spacer washer into the large front hole of the "tie down" brackets. Insert a 1/2" bolt through a square washer plate, the spacer washer and the Base Plate hole on each side of the truck and hand start a nut with a lockwasher. (See Sketch)
7. Align holes and install a 3/8" bolt through the Base Plate front brackets and the hole provided in the bumper mount brackets. Hand start a nut with a lockwasher on each side. (See Sketch)
8. The dimensional variations between otherwise identical cars can be considerable. While the location and size of the holes in the Base Plate were designed to facilitate easy installation, it may be necessary to file a hole slightly to allow a bolt to clear.
9. When all bolts align, attach the Base Plate to the car. (See Special Notice)
10. Replace the belly pan.

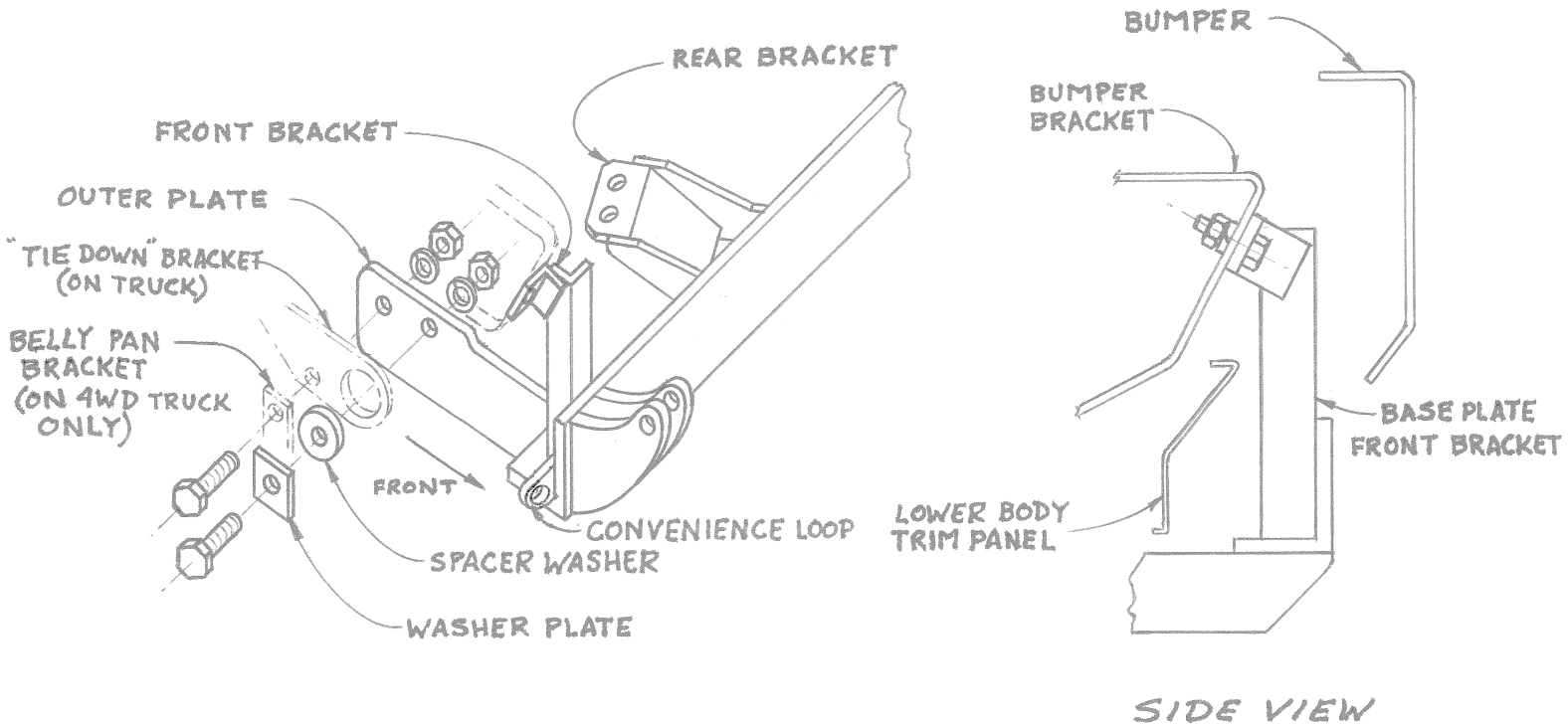
II. BASE PLATE INSTALLATION - 4WD MODELS

1. Remove the metal belly pan.
2. Remove the tow hooks if present.
3. Position the Base Plate so that its rear bracket holes align with the two forward-most holes in the frame, the Base Plate outer plate holes align with the "tie down" bracket holes and the Base Plate front bracket holes align with the holes in the bumper mount brackets located up behind the bumper and in front of the lower body trim panel. The "tie down" brackets are stamped metal brackets with a large round hole in front and a small round hole in the rear. They are welded on and protruding down from the frame rails.
4. When the Base Plate is in position, using Loctite or a similar product on all bolts, hand start the four 10MM bolts provided with lockwashers through the Base Plate rear bracket holes into the frame.
5. Place a round spacer washer into the large front hole of the "tie down" brackets. Insert a 1/2" bolt through a square washer plate, the spacer washer and the Base Plate hole on each side of the truck and hand start a nut with a lockwasher. (See Sketch)
6. Align holes and install a 3/8" bolt through the Base Plate front brackets and the hole provided in the bumper mount brackets. Hand start a nut with a lockwasher on each side. (See Sketch)
7. Hold the belly pan in position and mark where it hits the Base Plate rear brackets. The belly pan will have to be bent or notched to clear the Base Plate brackets.
8. With the belly pan in place, insert two of the 1/2" bolts provided through the belly pan side brackets, the rear hole in the "tie down" brackets and the Base Plate holes. Hand start a lockwasher and nut on each side.
9. The dimensional variations between otherwise identical cars can be considerable. While the location and size of the holes in the Base Plate were designed to facilitate easy installation, it may be necessary to file or drill a hole slightly to allow a bolt to clear.
10. When all bolts align, attach the Base Plate to the car (See Special Notice).

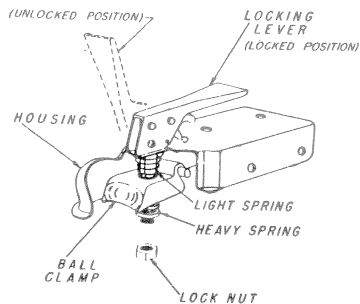
III. TOW BAR INSTALLATION

1. With all bolts properly installed, you are ready to install the Tow Bar. Hold the Tow Bar in position with the tabs aligned inside the tabs on the Base Plate and insert the pins. Slide the hairpin clips through the holes in the pins.
2. INSTALL A SAFETY CABLE OR CHAIN AND ADJUST THE COUPLER.
(SEE SKETCHES)
3. Do Not Substitute other devices if the pin and clip are lost.

DODGE-D-50 / MITSUBISHI 2WD + 4WD PICKUP
1905

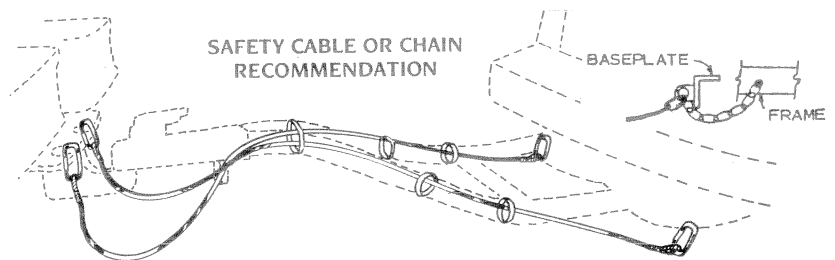


COUPLER FIT ADJUSTMENT



1. Using a 3/4" socket adjust the coupler to the ball by turning the nut. Tighten or loosen the nut until firm contact between coupler and ball is established.
2. Check ball to housing tension periodically and tighten if necessary.
3. Lightly lubricate the ball.

SAFETY CABLE OR CHAIN RECOMMENDATION



1. "X" pattern below Tow Bar solidly connected to the frame of the towing car and to the Base Plate convenience loops.
2. Permanent chains connected to the convenience loops and to the frame of the towed car.
3. Use cable or chain with at least the load rating that is on the coupler.