

DEALER
BE CERTAIN
USER RECEIVES
INSTRUCTION SHEET

INSTRUCTION SHEET

1983-86 NISSAN PICKUP 4WD

STYLE #1811-5202

DEALER
BE CERTAIN
USER RECEIVES
INSTRUCTION SHEET

NOTICE

1. THIS TOW BAR IS DESIGNED TO BE PARALLEL TO THE GROUND WHEN IT IS ATTACHED TO BOTH THE TOWED AND TOWING VEHICLES. IF THE TOW BAR IS AT AN ANGLE, THERE IS A RISK OF DAMAGE OR ACCIDENT.
2. THIS TOW BAR HAS BEEN DESIGNED TO TOW A MANUAL TRANSMISSION CAR OR AN AUTOMATIC WHICH HAS BEEN EQUIPPED WITH A SUITABLE PUMP OR DRIVESHAFT DISCONNECT.
3. BE SURE THE CAR BEING TOWED IS PROPERLY ALIGNED.
4. USE SAFETY CHAIN (SEE SKETCH). BLUE OX STYLE #8804 SAFETY CHAIN KIT IS RECOMMENDED.
5. DO NOT BACK UP WHEN TOWING. BACKING UP WILL DAMAGE THE TOW BAR.
6. UNLOCK STEERING WHEEL TO ALLOW FRONT WHEELS OF TOWED VEHICLE TO "'TRACK'".
7. PRIOR TO STARTING ON A TOWING TRIP, CHECK TO BE SURE ALL TOWING ACCESSORIES AND ATTACHMENT POINTS ARE SECURE; IE. ALL BOLTS TIGHT AND NO CRACKED WELDS. THIS IS IMPORTANT ON ALL OCCASIONS BUT PARTICULARLY ON A NEW INSTALLATION. ALL BOLTED CONNECTIONS AND WELDMENTS ON A NEW INSTALLATION SHOULD BE CHECKED JUST PRIOR TO INITIAL TOWING AND AGAIN AFTER 100-200 MILES OF TOWING.
8. AVOID SHARP TURNS AND ROUGH TERRAIN. CHECK INSTALLATION AFTER ANY UNUSUAL EVENT AND PERIODICALLY ON A LONG TRIP.
9. CHECK THE VEHICLE TO VEHICLE CLEARANCE IN A TURNING SITUATION.
10. DO NOT USE TOWED VEHICLE FOR STORING LUGGAGE, ETC. AS YOU MAY EXCEED THE TOWING CAPACITY OF THE TOW BAR.
11. ADJUST THE COUPLER FOR PROPER FIT TO THE BALL (SEE COUPLER ADJUSTMENT). FOR ADDED SECURITY, PLACE A LOCK, PIN OR BOLT THROUGH THE HOLE PROVIDED IN THE COUPLER LOCKING LEVER.

PARTS LIST

1. 1 - TOW BAR
2. 1 - BASE PLATE
3. 2 - 1/2" DIAMETER PINS
4. 2 - HAIRPIN CLIPS
5. 6 - 12MM -1.25 X 25MM BOLTS
6. 6 - 12MM LOCKWASHERS

TOOLS

- 17MM SOCKET
- 10MM SOCKET
- 14MM SOCKET
- 17MM END WRENCH

SPECIAL NOTICE

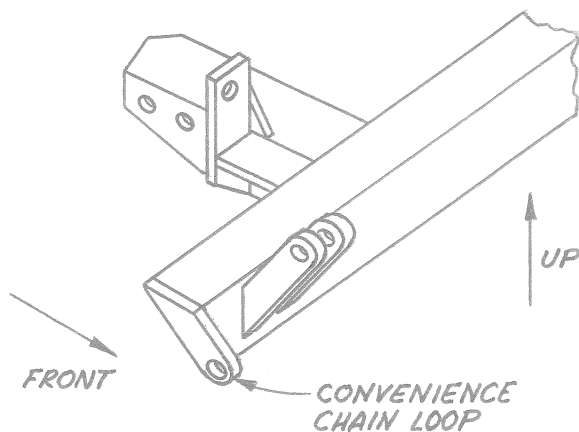
THIS TOW BAR IS DESIGNED TO USE EXISTING HOLES AND HARDWARE TO MOUNT THE BASE PLATE ON THE CAR. EVEN THOUGH THE BOLT IS THERE, HOWEVER, DO NOT ASSUME IT IS ADEQUATE FOR MOUNTING THE BASE PLATE. MANUFACTURERS MAKE MANY CHANGES IN HARDWARE BOTH WITHIN AND BETWEEN MODEL YEARS. BE SURE THAT THE BOLT IS LONG ENOUGH TO PROTRUDE PAST THE NUT A DISTANCE NO LESS THAN THE DIAMETER OF THE BOLT, AFTER THE BASE PLATE IS MOUNTED. THE THREADS SHOULD BE IN "'AS NEW'" CONDITION AND IT IS RECOMMENDED THAT "'LOCKTITE'" BE USED. IF A NEW BOLT IS REQUIRED, BE SURE IT IS SAE GRADE 5 OR BETTER.

INSTALLATION

1. THE TOW BAR ASSEMBLY CONSISTS OF A PERMANENTLY MOUNTED BASE PLATE AND A DETACHABLE TOW BAR.
2. THE BASE PLATE MOUNTS TO THE FRONT UNDERSIDE OF THE TRUCK USING THE SIX PROVIDED BOLTS, THREE ON EACH SIDE OF THE TRUCK.

3. REMOVE THE TOW HOOK FROM THE PASSENGERS SIDE OF THE TRUCK AND NOTE THAT THERE ARE SIMILAR BOLT HOLES ON THE DRIVERS SIDE. THE TOW BAR WILL USE THESE HOLES FOR MOUNTING.
4. FOR EASE OF INSTALLATION, REMOVE THE BOLTS WHICH HOLD THE SWAY BAR BRACKETS TO THE FRAME AND LET THE SWAY BAR SWING DOWN OUT OF THE WAY.
5. HOLD THE BASE PLATE IN POSITION AND MARK THE BELLY PAN WHERE IT INTERFERES WITH THE BASE PLATE.
6. REMOVE THE BELLY PAN AND CUT IT TO CLEAR THE BASE PLATE.
7. REPOSTIION THE BASE PLATE AND HAND START THE SIX PROVIDED BOLTS WITH LOCKWASHERS. USE LOCKTITE.
8. THE DIMENSIONAL VARIATIONS BETWEEN OTHERWISE IDENTICAL CARS CAN BE CONSIDERABLE. WHILE THE LOCATION AND SIZE OF THE HOLES IN THE BASE PLATE WERE DESIGNED TO FACILITATE EASY INSTALLATION, IT MAY BE NECESSARY TO FILE A HOLE SLIGHTLY TO ALLOW A BOLT TO CLEAR.
9. WHEN ALL BOLTS ALIGN, TIGHTEN SECURELY.
10. REINSTALL THE SWAY BAR.
11. REINSTALL THE BELLY PAN.
12. WITH ALL BOLTS PROPERLY INSTALLED, YOU ARE READY TO INSTALL THE TOW BAR. HOLD THE TOW BAR IN POSITION WITH THE TABS ALIGNED INSIDE THE TABS OF THE BASE PLATE AND INSERT THE PINS. SLIDE THE HAIRPIN CLIPS THROUGH THE HOLES IN THE PINS. INSTALL A SAFETY CHAIN AND ADJUST THE COUPLER.
13. DO NOT SUBSTITUTE OTHER DEVICES IF THE PIN AND CLIP ARE LOST.

'83-'86 NISSAN 4WD PICKUP

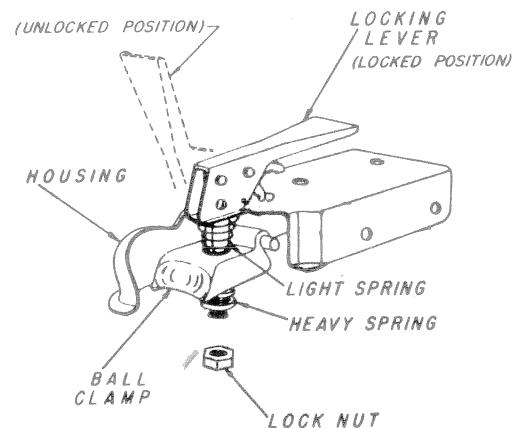


SAFETY CHAIN RECOMMENDATION



1. "X" PATTERN BELOW TOW BAR SOLIDLY CONNECTED TO THE FRAME OF THE TOWING CAR AND TO THE BASE PLATE CONVENIENCE LOOPS.
2. PERMANENT CHAINS CONNECTED TO THE CONVENIENCE LOOPS AND TO THE FRAME OF THE TOWED CAR.
3. USE A CHAIN WITH THE SAME (OR GREATER) LOAD RATING THAT IS MARKED ON THE COUPLER.

COUPLER FIT ADJUSTMENT



1. ADJUST COUPLER TO BALL BY TURNING THE NUT. TIGHTEN OR LOOSEN NUT UNTIL FIRM CONTACT BETWEEN COUPLER AND BALL IS ESTABLISHED.
2. CHECK BALL TO HOUSING TENSION PERIODICALLY AND TIGHTEN IF NECESSARY.