



**BX1682**

1999NS-2007 Chevrolet & GMC Pickup 1500 Classic  
 (2WD & 4WD, No Heavy Duty)  
 1999NS-06 Chevy Suburban 1500  
 2000-06 Chevy Tahoe 1500  
 2000-06 GMC Yukon 1500 (XL, XLT, SLT) (Denali)  
 2002-06 Chevy Avalanche  
 2002-06 Cadillac Escalade (Incl. EXT)  
 Installation Instructions

Serial Number

Please read **BOTH** these Installation Instructions and the Baseplate General Towing Instructions before attempting to install or operate this equipment.

**Attachment Tab Height:** 17"  
**Attachment Tab Width:** 30-1/8"

- Blue Ox® towing products and accessories are intended to be installed by Blue Ox® Dealers who are familiar with our products and have the equipment and knowledge to do "fit work". When necessary Blue Ox® Dealers can be found at [www.blueox.com](http://www.blueox.com) or by contacting our Customer Care Department at (402) 385-3051.
- Many Blue Ox® Baseplates are designed to use existing holes and hardware to mount the baseplate to the towed vehicle. Even though bolts are there, do not assume they are adequate for baseplate mounting. Always use hardware supplied in the hardware kit or existing hardware specified in the Baseplate Towing Installation Instructions.

**Bolt Torque Specifications**  
Torque in Foot-Pounds for Metric Bolts

Bolt Size	Grade 8.8	Grade 10.9
6MM	6	8
8MM	16	22
10MM	31	40
12MM	54	70
14MM	89	117

**Bolt Torque Specifications**  
Torque in Foot-Pounds for Inch Bolts

Bolt Size	Grade 5	Grade 8
1/4"	10	14
5/16"	19	29
3/8"	33	47
7/16"	54	78
1/2"	78	119
5/8"	154	230

Confirm the towability and pre-towing procedures for your vehicle with the owner's manual or contact the vehicle's manufacturer for specific towing procedures.

**! WARNING**

Failure to read and follow these instructions could result in separation of the towed vehicle from the tow bar, causing property damage, loss of towed vehicle, personal injury or death.

## BX1682

1999NS-2007 Chevrolet & GMC Pickup 1500 Classic (2WD & 4WD, No Heavy Duty)  
1999NS-06 Chevy Suburban 1500  
2000-06 Chevy Tahoe 1500  
2000-06 GMC Yukon 1500 (XL, XLT, SLT) (Denali)  
2002-06 Chevy Avalanche  
2002-06 Cadillac Escalade (Incl. EXT)  
Installation Instructions

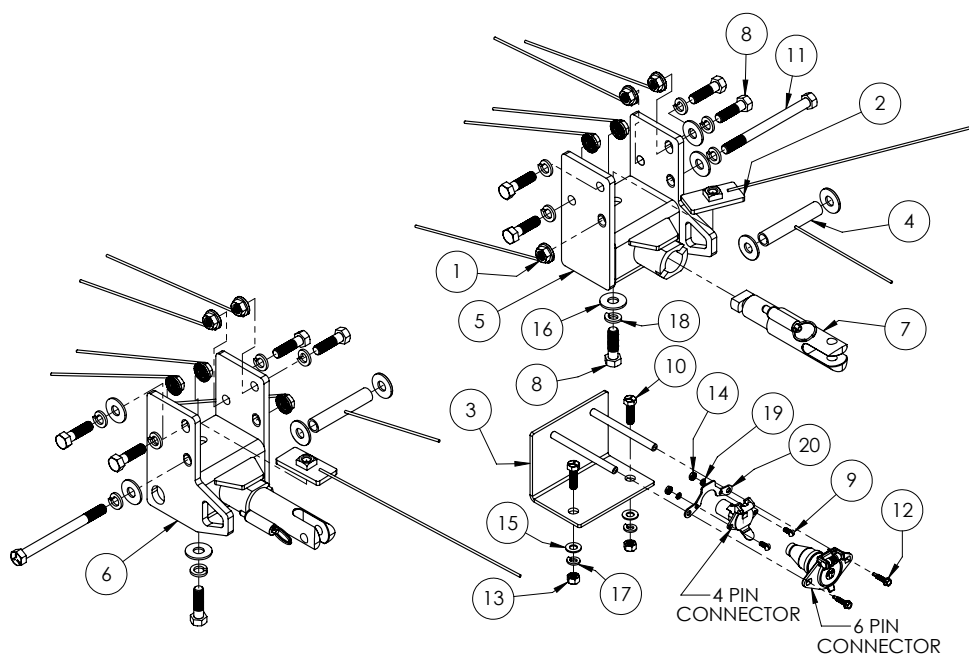
### Parts List

Ref. No.	Qty.	Part #	Description
1	10	61-4029	1/2-13 Whiz Nut, with 10" Wire
2	2	61-5342	1/2-13 Nutplate, with 14" Wire
3	1	61-6238	Weldment, Electrical Bracket, BX1667
4	2	61-6239	Weldment, Spacer Tube, BX1667
5	1	61-6552	Weldment, Baseplate, Driver's Side, BX1682
6	1	61-6553	Weldment, Baseplate, Passenger's Side, BX1682
7	2	62-3468	Attachment Assembly, SF/LB (R)
8	10	201-0068	1/2-13 x 1 3/4" Hex Bolt, Grd. 5, ZP
9	2	201-0192	#10-32 x 1/2" Slot, Rd. Hd. Screw
10	2	201-0368	3/8-16 x 1 1/4" Hex Bolt, Grd. 5, ZP
11	2	201-0772	1/2-13 x 6" Hex Bolt, Grd. 5, ZP
12	2	201-0979	#12-14 x 1" Self Drilling Screw, ZP
13	2	202-0003	3/8-16 Hex Nut, ZP
14	2	202-0047	#10-32 Hex Nut
15	2	203-0003	3/8" Flat Washer, ZP
16	10	203-0005	1/2" Flat Washer, ZP
17	2	203-0010	3/8" Lock Washer, ZP
18	12	203-0012	1/2" Lock Washer, ZP
19	2	203-0054	#10 Lock Washer
20	1	299-0685	Electrical Bracket, ZP
21	2	226-0049	Baseplate Safety Cable, 36" CL IV (Not Shown)
22	2	229-0512	Quicklink, 1/2, ZP (Not Shown)
23	2	290-0437	Cap Plug, Black (Not Shown)

### Tools

#### Required

6MM Socket  
10MM Socket  
15MM Socket  
18MM Socket  
9/16" Socket  
3/4" Socket  
17/32" Drill Bit  
Loctite® Red



### Important:

Use only genuine factory replacement parts on your baseplate. Do **NOT** substitute homemade or non-typical parts. If a bolt is lost or in need of replacement, for your safety and the preservation of your baseplate, be sure to use a replacement bolt of the same grade (In most cases it will be Grade 5, please reference the parts list above). Replacement parts may be ordered through your nearest Blue Ox® Dealer or Distributor. Failing to follow and/or altering these installation instructions in either installation or required equipment will void the manufacturer's warranty.

## BX1682

1999NS-2007 Chevrolet & GMC Pickup 1500 Classic (2WD & 4WD, No Heavy Duty)  
1999NS-06 Chevy Suburban 1500  
2000-06 Chevy Tahoe 1500  
2000-06 GMC Yukon 1500 (XL, XLT, SLT) (Denali)  
2002-06 Chevy Avalanche  
2002-06 Cadillac Escalade (Incl. EXT)  
Installation Instructions

### Vehicle Weight:

The weight of this vehicle is near the Class III, 5,000 lb rating limitations. Some models, depending on options, may well exceed this 5,000 lb rating. Be sure to confirm the weight of your individual vehicle before towing. As of 1999 the Aventa® II is now rated 10,000 lbs. and either the Aventa® II or the Aventa® LX tow bar must be used for these applications.

**Tow Bar Adapters are NOT to be used with vehicle's weighing over 5,000 lbs.**

### Installation Notes:

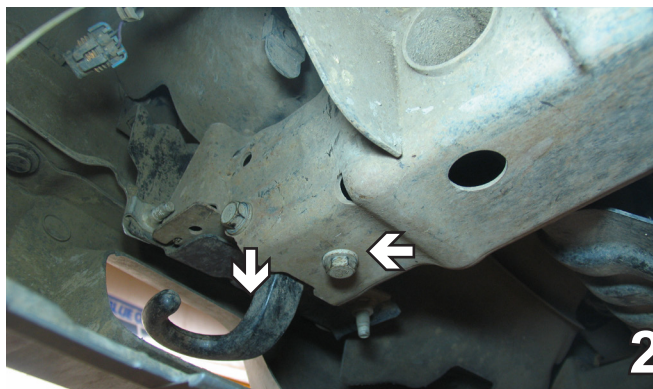
The plastic frame shield, tow hooks, and fog lights (if necessary) are removed during the baseplate installation. Drilling is required. The plastic frame shield and the tow hooks will not be reinstalled.

The dimensional variations between otherwise identical vehicles can be considerable. While the baseplate was designed for easy installation, it may be necessary to tailor the baseplate slightly to compensate for auto manufacturer's tolerances. These minor adjustments may include filing a hole slightly, bending electrical rods or bending end plates.

The BX8869 Bulb and Socket Wiring Kit is recommended for this vehicle.



1. Using the 10MM socket, remove two metric bolts from the plastic frame shield, just behind the metal bumper. Do this to both sides of the vehicle. The driver's side is shown in the photo above. Remove the plastic frame shield from the frame. The metric bolts and the plastic shield will NOT be reinstalled.

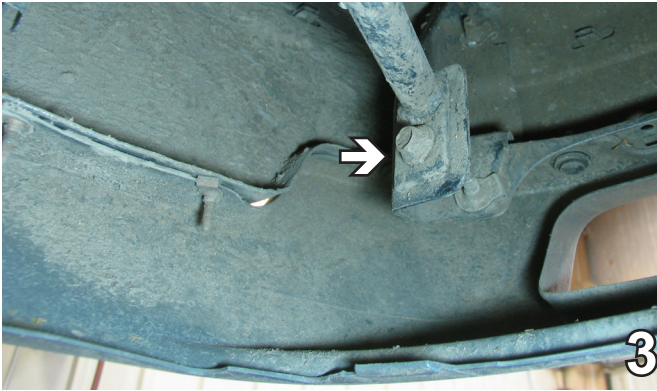


2. Using the 18MM socket, remove three metric bolts from the tow hooks, one on the bottom of the frame rail and two on the sides. Do this to both sides of the vehicle. The tow hooks will NOT be reinstalled.

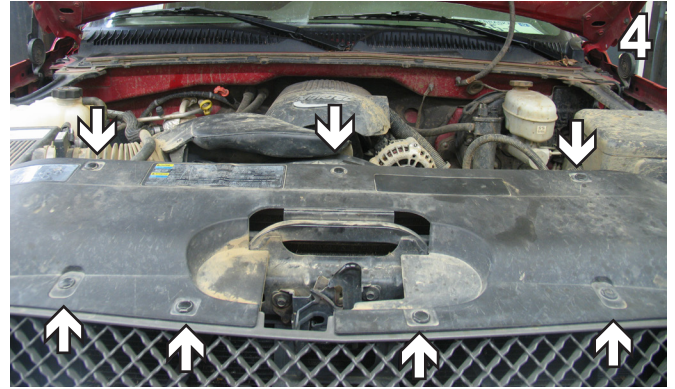
Handling of some cosmetic parts when installing this product may require the use of protective covers, rags, specialty tools, etc. to prevent damage.

## BX1682

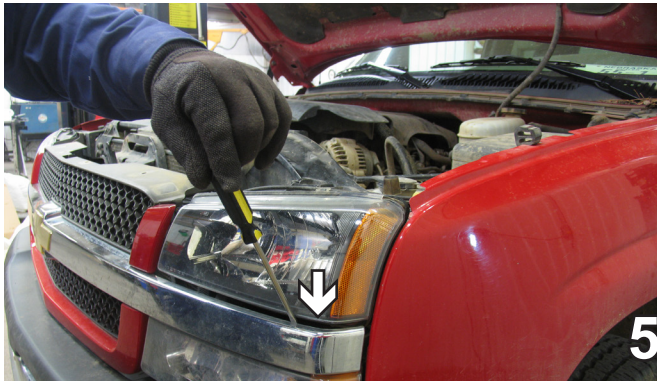
1999NS-2007 Chevrolet & GMC Pickup 1500 Classic (2WD & 4WD, No Heavy Duty)  
1999NS-06 Chevy Suburban 1500  
2000-06 Chevy Tahoe 1500  
2000-06 GMC Yukon 1500 (XL, XLT, SLT) (Denali)  
2002-06 Chevy Avalanche  
2002-06 Cadillac Escalade (Incl. EXT)  
Installation Instructions



3. Underneath the vehicle, using an 15MM socket, remove the bolt holding the brace. Do this to both sides of the vehicle. Set the bolt and brace aside to be reinstalled later.



4. Remove seven push pins from the top of the plastic cover. Set the cover and the pins aside to be reinstalled later.

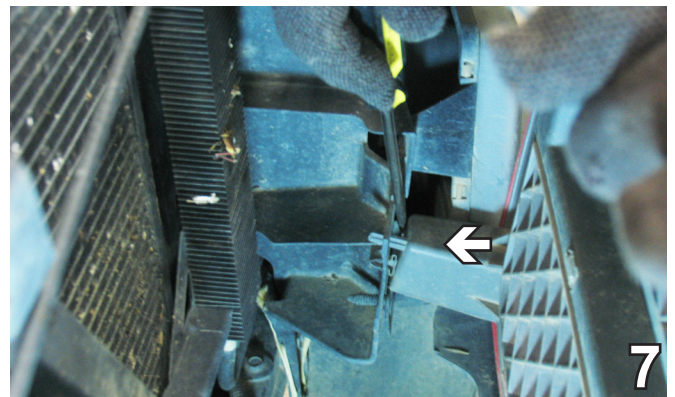


5. Insert a flat screw driver between the headlight and the plastic cover. Carefully pry loose the plastic cover. Do this on both sides of the cover and set aside to be reinstalled later.



6. Insert a flat screw driver behind the front grille bracket. Push forward to release the bracket. Do this on both sides.

7. Behind the grille, push down on the tab in order to remove the grille. Do this on both sides of the vehicle. Set the grill aside to be reinstalled later.



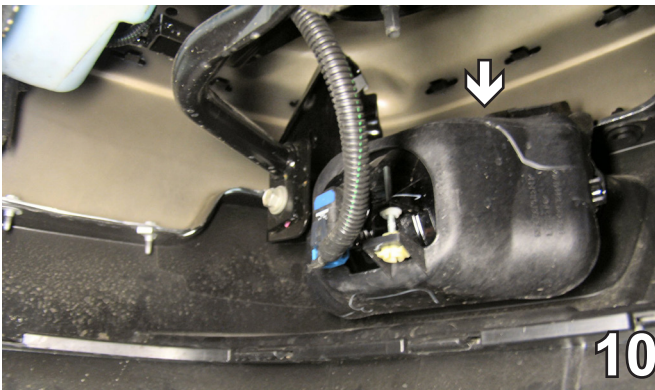
## BX1682

1999NS-2007 Chevrolet & GMC Pickup 1500 Classic (2WD & 4WD, No Heavy Duty)  
1999NS-06 Chevy Suburban 1500  
2000-06 Chevy Tahoe 1500  
2000-06 GMC Yukon 1500 (XL, XLT, SLT) (Denali)  
2002-06 Chevy Avalanche  
2002-06 Cadillac Escalade (Incl. EXT)  
Installation Instructions

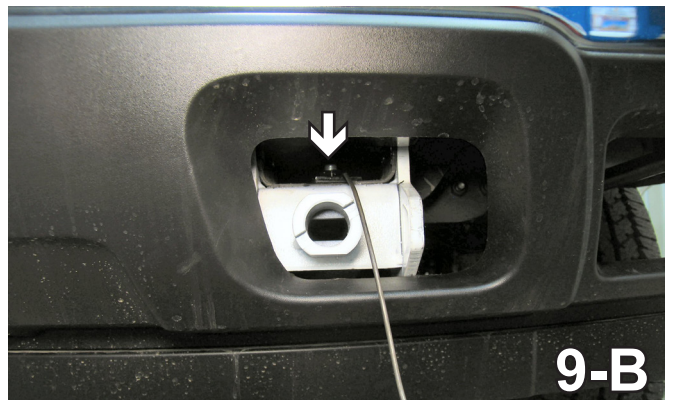
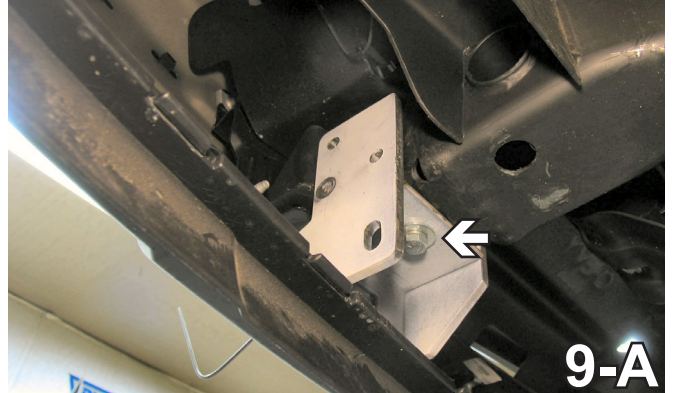


8. Using an 15MM socket, remove the bolt from the top of the bumper. Do this on both sides of the vehicle. Set the bumper aside to be reinstalled later.

**The baseplate is painted white for illustrative purposes ONLY. The actual baseplate has a black powder coat finish.**



10. If a right angle drill is not available, removal of the fog lights will be necessary to open the area to the side of the frame rail for drilling. To remove the fog lights, when necessary, use a 10MM socket to remove two metric bolts from the top side of the fog light, behind the metal bumper. Unplug the electrical connections and set the fog lights and bolts aside to be reinstalled later.

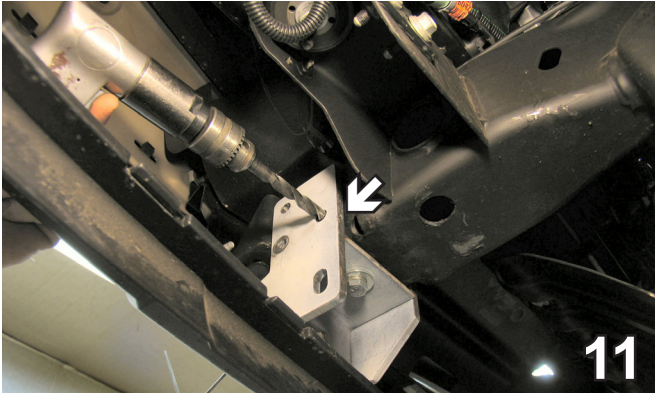


9. On the driver's side, slide the baseplate onto the frame rail end, just behind the metal bumper, align the lower tow hook mount hole with the lower baseplate endplate hole (see photo 9-A). Insert the 1/2-13 nut plate into the frame end to align with the lower tow hook and endplate holes and tighten the 1/2-13 hex bolt, 1/2" lock washer and the 1/2" flat washer into the nut plate (see photo 9-B). Do this to both sides of the vehicle.

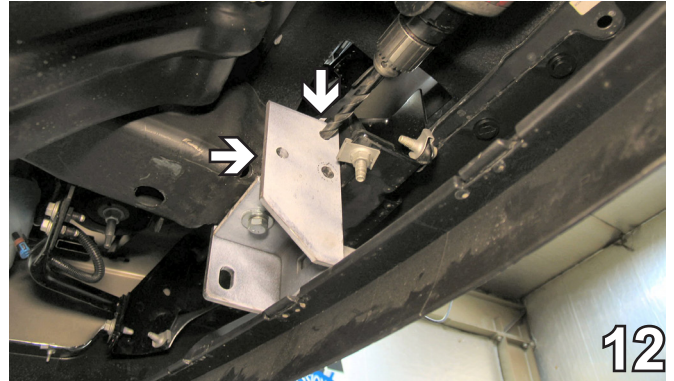
**Some vehicles not having tow hooks may not have this area open. If that is the case, cut out the marked area on the fascia.**

## BX1682

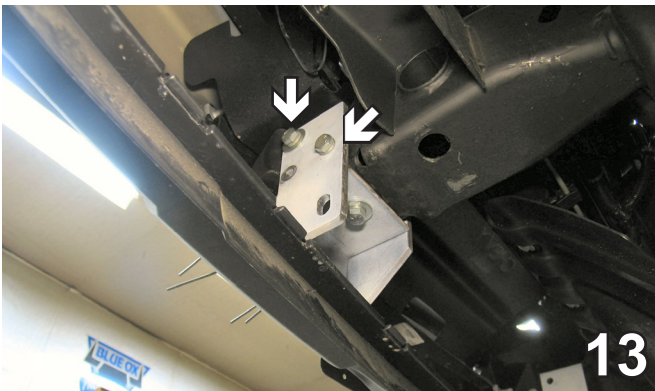
1999NS-2007 Chevrolet & GMC Pickup 1500 Classic (2WD & 4WD, No Heavy Duty)  
1999NS-06 Chevy Suburban 1500  
2000-06 Chevy Tahoe 1500  
2000-06 GMC Yukon 1500 (XL, XLT, SLT) (Denali)  
2002-06 Chevy Avalanche  
2002-06 Cadillac Escalade (Incl. EXT)  
Installation Instructions



11. On the side of the frame rail, next to the fog light, use the baseplate as a template to drill the lower back hole on the side of the frame rail with the 17/32" drill bit. Do this to both sides of the vehicle. The driver's side is shown in the photo above.



12. On the side of the frame rail, next to the radiator, use the baseplate as a template to drill the lower back hole and upper front hole on the side of the frame rail with the 17/32" drill bit. Do this to both sides of the vehicle. The driver's side is shown in the photo above.



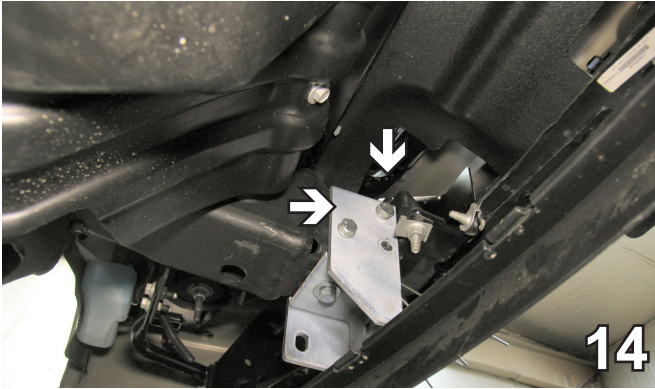
13. Insert the 1/2-13 whiz nut with wire into the frame end to align with holes on the fog light side of the frame. Tighten the 1/2-13 hex bolts and lock washers with the 3/4" socket. The top bolt will need to have a flat washer installed with the lock washer to cover the slot in the baseplate endplate. Do this to both sides of the vehicle.

When using power drills be aware of the dangers of torque and drill bit length.

**BE SURE TO USE LOCTITE® RED ON ALL BOLTS BEFORE TIGHTENING. TIGHTEN ALL BOLTS ACCORDING TO THE TORQUE CHART ON THE FRONT PAGE OF THESE INSTRUCTIONS OR ON PAGE 3 OF THE BASEPLATE GENERAL TOWING INSTRUCTIONS.**

## BX1682

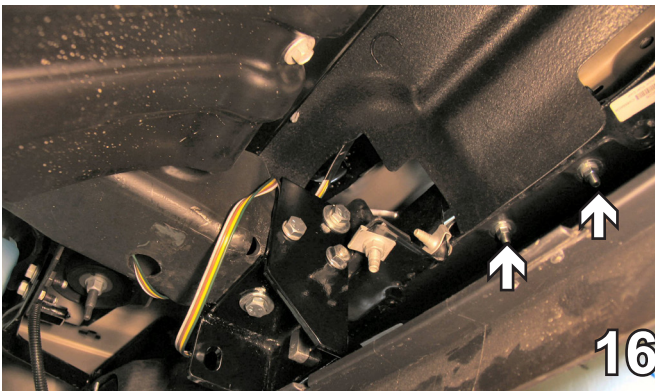
1999NS-2007 Chevrolet & GMC Pickup 1500 Classic (2WD & 4WD, No Heavy Duty)  
1999NS-06 Chevy Suburban 1500  
2000-06 Chevy Tahoe 1500  
2000-06 GMC Yukon 1500 (XL, XLT, SLT) (Denali)  
2002-06 Chevy Avalanche  
2002-06 Cadillac Escalade (Incl. EXT)  
Installation Instructions



14. Insert the 1/2-13 whiz nut with wire into the frame end to align with the drilled holes on the radiator side of the frame. Tighten the 1/2-13 hex bolts and lock washers with the 3/4" socket. The top bolt will need to have a flat washer with the lock washer to cover slot in baseplate endplate. Do this to both sides of the vehicle.



15. Insert the spacer tube inside the frame end to align with the existing tow hook mount holes. Then insert the 1/2-13 x 6" hex bolt through the baseplate, into the spacer tube from the fog light side of the frame rail and tighten into the 1/2-13 whiz nut on the radiator side of the frame rail with the 3/4" socket. Do this to both sides of the vehicle. The driver's side is shown in the photo above.



16. Remove the two pushpins from underneath the webbing on the back side of the metal bumper. Align the electrical bracket to the top of the webbing to allow the electrical rods to come through the opening on the front side of the metal bumper. Insert the two 3/8-16 x 1 1/4" hex bolts into the top side of the electrical bracket holes. Tighten the 3/8-16 hex nuts and lock washers on the bottom side of the webbing with the 9/16" socket. Installing the electrical bracket will allow you a convenient location to attach your electrical plug receptacle on the front of your vehicle.

17. Reinstall the fog lights.

Install the tow bar and safety cables according to the instructions included in their packages.

Do NOT substitute other devices if the tow bar pin and clip are lost.

## BX1682

1999NS-2007 Chevrolet & GMC Pickup 1500 Classic (2WD & 4WD, No Heavy Duty)  
1999NS-06 Chevy Suburban 1500  
2000-06 Chevy Tahoe 1500  
2000-06 GMC Yukon 1500 (XL, XLT, SLT) (Denali)  
2002-06 Chevy Avalanche  
2002-06 Cadillac Escalade (Incl. EXT)  
Installation Instructions

**Be sure that ALL electrical connections are plugged in properly and functioning BEFORE installing the fascia.**

### **DEALER or INSTALLER:**

**Be certain the user receives the instruction sheets for their products.**



**Shown without removable tabs installed.**



**Shown with removable tabs installed.**

If the baseplate is in an accident, it must be replaced. DO NOT use it again! An accident can cause unseen damage and using it again could result in more damage or serious injury. DO NOT use the baseplate if it is damaged or missing parts.

## CUSTOMER SERVICE COMMITMENT

Blue Ox is committed to providing you with exceptional customer care throughout your lifetime with our products. Our team is here to assist you with any questions you may have regarding the performance of your product. Simply call (402) 385-3051 and you can speak with our customer care team.

Additionally, please visit our website to see which rallies our Destination America team will be attending. For a nominal fee, our service technician will service your towing system to ensure it's in proper working condition. Also as a commitment to our customers, should you visit our factory you can stay at our full service Blue Ox campground at no charge along with enjoying a factory tour.

Again thank you for being our customer and for the confidence you have shown in the performance of our products. It is because of customers like you we enjoy the success we have today.



© 2006, 10, 11 Blue Ox  
One Mill Road, Industrial Park  
Pender, Nebraska 68047  
Phone: (402) 385-3051  
Toll Free: (888) 425-5382  
Fax: (402) 385-3360  
[www.blueox.com](http://www.blueox.com)  
8/11/17



# General Information

1. Ensure that your product(s) are registered online at [www.blueox.com](http://www.blueox.com). It is crucial to register your product(s) so that you may be alerted of product offerings, updates, upgrades, maintenance and safety bulletins, and/or recalls.
2. **It is the owner's responsibility to inspect all towing equipment for cracked welds, missing or worn parts and loose bolts before each towing trip.** Be sure to use Loctite® Red on all bolts and tighten to the recommended specifications.
3. **It is the owner's responsibility to hook up all towing equipment per manufacturer's instructions/recommendations.**
4. Remove the attachment tabs when not in use (if applicable).

## Notice To Baseplate Installer

### 1. It is YOUR responsibility to watch for:

- Oil cooler and air conditioner lines
- Electrical wires and hoses
- Missing parts or attaching points on the frame

\*\* If the baseplate is improperly installed and is against a wire or hose, it could cause fluid leaks or electrical shorts some time after the actual baseplate installation.

## Permanent Baseplate Safety Cable Installation

Permanent baseplate safety cables are strongly recommended when towing a vehicle with a tow bar. The principle function of the permanent baseplate safety cables is to prevent the towed vehicle from breaking loose in the event the connection between the frame of the towed vehicle and the baseplate fails or becomes disconnected. The cables must be connected from the baseplate to the frame rail or cross member of the vehicle's frame. The illustrations below show the possible arrangements recommended by Blue Ox®. Each permanent baseplate safety cable must have an adequate weight rating for the towing system. The weight rating of the two (2) cables together will not qualify.

***Do not mount the permanent baseplate safety cables against wires, hoses or brake lines.***

These permanent baseplate safety cables should remain installed as long as the baseplate is installed on the vehicle. Permanent baseplate safety cables are to be used in conjunction with, and NOT a replacement for legally required safety cables attaching the towed vehicle to the towing vehicle.

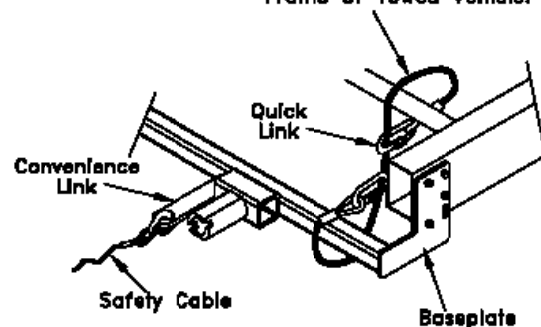
### OPTION #1

Permanent Baseplate Safety Cables to Cross Member or Frame of Towed Vehicle.



### OPTION #2

Permanent Baseplate Safety Cables to Cross Member or Frame of Towed Vehicle.



# BLUE OX ORIGINAL PURCHASERS THREE YEAR LIMITED WARRANTY

Automatic Equipment Manufacturing Company ("Automatic") warrants to the original (first) retail purchaser that this product, manufactured by Automatic, shall be free from defect in material and workmanship under normal use and service for a period of three years from the date of delivery.

During said three-year period, Automatic will repair or replace any parts that have been returned by the original purchaser, to the factory, transportation prepaid, and in Automatic's sole and absolute opinion found to be defective.

Limitations on Warranty Coverage:

Coverage under this warranty will be valid only if the customer warranty card is returned by the original purchaser within 30 days of purchase.

Coverage under this warranty will be effective only when a copy of the original invoice, showing date and place of purchase, accompanies any claim for warranty. This warranty is NON TRANSFERABLE.

This limited warranty will not cover, in any way or form, any alleged damages caused by incorrect or improper installation, improper use, modification or neglect of product, failure to properly service and maintain, misuse, act of God, accident or failure of the user to follow guidelines contained in the instructional material provided by Automatic.

This warranty does not cover normal wear and tear, paint or rust.

Warrantor assumes no responsibility to the owner for loss of use of product, loss of time, inconvenience or any other damage consequential or otherwise. Including, but not limited to mileage, expense of transporting of product, return shipping expense, mechanics travel time, telephone, road service, towing, and rental during repairs, travel, lodging, loss or damage to personal property or loss of earnings.

**REPAIR OR REPLACEMENT AS SET FORTH IN THIS LIMITED WARRANTY IS THE SOLE EXCLUSIVE REMEDY OF THE PURCHASER. AUTOMATIC SHALL NOT BE LIABLE FOR ANY INCIDENTAL OR CONSEQUENTIAL DAMAGES FOR BREACH OF ANY EXPRESS OR IMPLIED WARRANTY ON THIS PRODUCT. EXCEPT TO THE EXTENT PROHIBITED BY APPLICABLE LAW, ANY IMPLIED WARRANTY OF MERCHANTABILITY OR FITNESS FOR A PARTICULAR PURPOSE ON THIS PRODUCT IS LIMITED IN LENGTH TO THE DURATION OF THIS WARRANTY.**

Please visit <http://blueox.com/warranty/> to register your warranty

