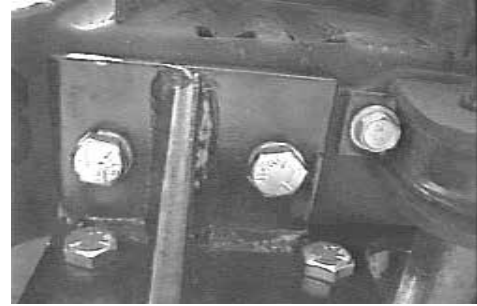




**Installation Instructions BX1639
GMC 2500 Van 2000**

Serial No.

The front bumper and lower plastic fascia are removed for baseplate installation. All holes need to be drilled. Use Loctite with all bolts.



1. Remove the two bolts from the bottom of the bumper and remove bumper from vehicle.

4. Mark and drill the two bottom holes (1/2") for each bracket. Use the 1/2" hardware as shown on page 3.



2. Remove the Hex head screws from the plastic bumper fascia connecting it to the bumper.

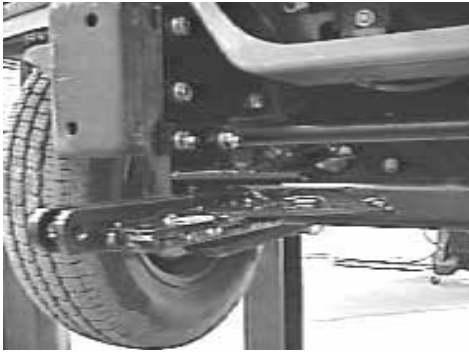
5. Insert all wire nuts through the slot on the outside of each frame. Hand tighten only.



3. Hold the appropriate side bracket to the inside of the frame. Place the bracket butted against the lip of the bumper.

6. Once the bottom bolts are installed, drill the four inside bolts. Use 1/2" hardware as shown on page two. Hand tighten only.

Automatic



7. Once both pieces have been installed, bolt the main weldment to them using the 1/2" hardware as shown in the drawing on page 3. Once all bolts have been started tighten according to the chart in the General Instruction Sheet.
8. Replace the main bumper.



9. Hold the plastic fascia piece up to attachment tabs and mark area needed to be trimmed so it can be replaced to its original position.

Tools Required

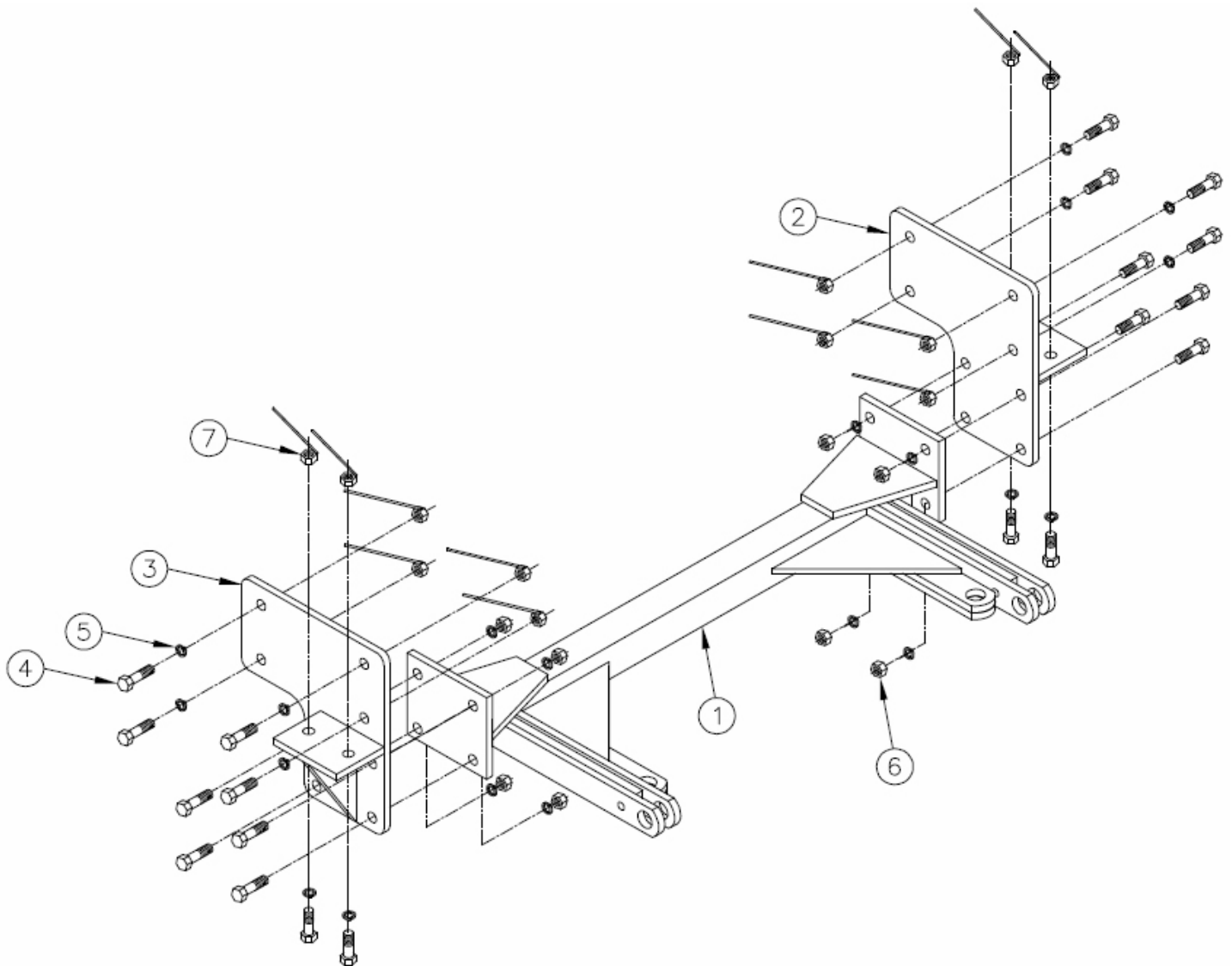
Loctite
21mm Wrench

10mm Wrench
1/2" Drill Bit

3/4" Wrenches
Utility Knife

Parts List

Ref. No.	Qty.	Part No.	Description
1	1	61-5523	Weldment, Base Plate, BX1639
2	1	61-5524	Weldment, Bracket, DS, BX1639
3	1	61-5525	Weldment, Bracket, PS, BX1639
4	20	201-0051	1/2-13 x 1 1/2 Bolt, Hex Grd. 5, ZP
5	20	203-0012	1/2 Lock Washer, ZP
6	8	202-0005	1/2-13 Nut, Hex, ZP
7	12	61-4029	1/2-13 Whiz Nut, ZP, With 10 Inch Wire



General Information

1. Ensure that your product(s) are registered online at www.blueox.com. It is crucial to register your product(s) so that you may be alerted of product offerings, updates, upgrades, maintenance and safety bulletins, and/or recalls.
2. **It is the owner's responsibility to inspect all towing equipment for cracked welds, missing or worn parts and loose bolts before each towing trip.** Be sure to use Loctite® Red on all bolts and tighten to the recommended specifications.
3. **It is the owner's responsibility to hook up all towing equipment per manufacturer's instructions/recommendations.**
4. Remove the attachment tabs when not in use (if applicable).

Notice To Baseplate Installer

1. It is YOUR responsibility to watch for:

- Oil cooler and air conditioner lines
- Electrical wires and hoses
- Missing parts or attaching points on the frame

** If the baseplate is improperly installed and is against a wire or hose, it could cause fluid leaks or electrical shorts some time after the actual baseplate installation.

Permanent Baseplate Safety Cable Installation

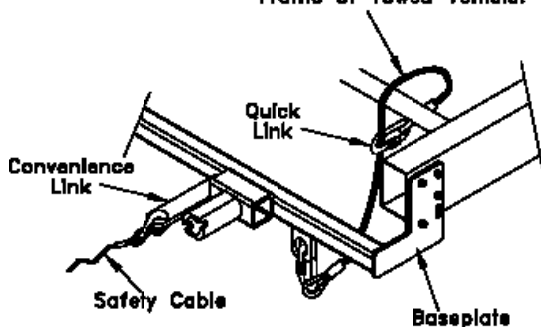
Permanent baseplate safety cables are strongly recommended when towing a vehicle with a tow bar. The principle function of the permanent baseplate safety cables is to prevent the towed vehicle from breaking loose in the event the connection between the frame of the towed vehicle and the baseplate fails or becomes disconnected. The cables must be connected from the baseplate to the frame rail or cross member of the vehicle's frame. The illustrations below show the possible arrangements recommended by Blue Ox®. Each permanent baseplate safety cable must have an adequate weight rating for the towing system. The weight rating of the two (2) cables together will not qualify.

Do not mount the permanent baseplate safety cables against wires, hoses or brake lines.

These permanent baseplate safety cables should remain installed as long as the baseplate is installed on the vehicle. Permanent baseplate safety cables are to be used in conjunction with, and NOT a replacement for legally required safety cables attaching the towed vehicle to the towing vehicle.

OPTION #1

Permanent Baseplate Safety Cables to Cross Member or Frame of Towed Vehicle.



OPTION #2

Permanent Baseplate Safety Cables to Cross Member or Frame of Towed Vehicle.

