



Installation Instructions BX1638
1997-2002 Chevrolet S-10 Blazer 2WD
1997-1998 GMC S-15 Jimmy 2WD

Serial No.



Figure 1

Holes need to be drilled and the plastic bumper facia needs to be trimmed for the attachment tabs. Use Loctite for each bolt. If using a car mounted tow bar it is necessary to install a BX88133 or BX88135, depending on the tow bar.



Figure 4



Figure 2

1. Hold the baseplate up to the bottom of the frame so it is centered. Mark area needed to be trimmed on the plastic facia to allow the attachment tabs to extend through. A small opening exists which is used for tow hooks. Trim plastic . Figure 1 and 2.

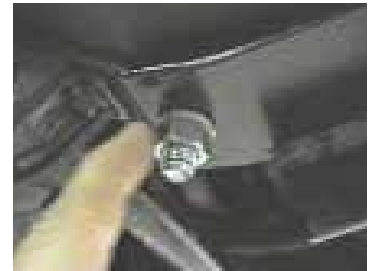


Figure 5

2. Take a bolt with wire and insert it through one of the holes on side the of the frame and into the hole forward of the sway bar/torsion brackets (bottom of the frame). Do this for both sides. Figure 3 and 4.

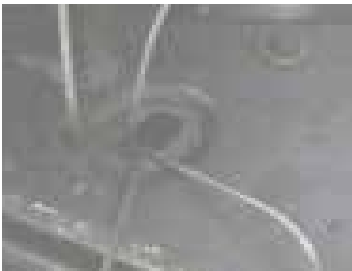


Figure 3

3. Place the rear holes of the baseplate through the bolts and tighten with the hardware shown in drawing on last page. Figure 5.

4. Drill the remaining holes for the baseplate, two for the bottom and two for the sides. Use same hardware as in previous steps.

5. DEALER OR INSTALLER: BE CERTAIN THE USER RECEIVES THE INSTRUCTION SHEET.

Tools Required

Loctite Blue

1/2 Drill Bit

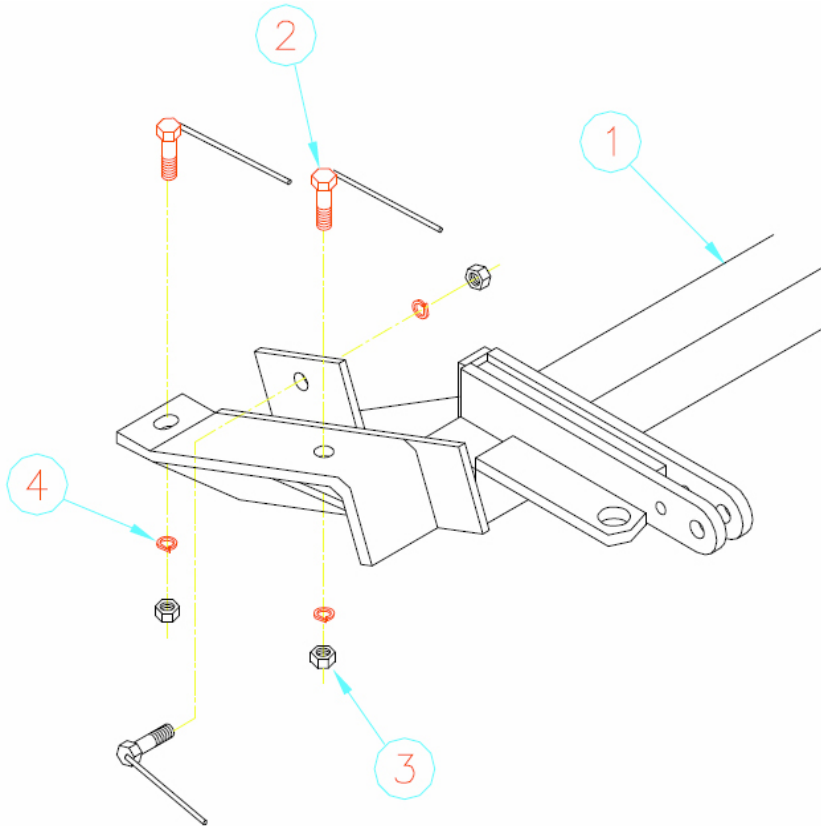
3/4" Wrench

Utility Knife

Automatic

Parts List

Ref. No.	Qty.	Part No.	Description
1	1	61-5491	Weldment, Baseplate, BX1638
2	6	61-5511	1/2" Bolt with Wire
3	6	202-0005	1/2-13 Hex Nut, Grade 5
4	6	203-0012	1/2 Lock Washer
	2	226-0046	Baseplate Safety Cable, 36" CL III (Not Shown)
	2	229-0359	Quicklink, 3/8, ZP (Not Shown)



General Information

1. Ensure that your product(s) are registered online at www.blueox.com. It is crucial to register your product(s) so that you may be alerted of product offerings, updates, upgrades, maintenance and safety bulletins, and/or recalls.
2. **It is the owner's responsibility to inspect all towing equipment for cracked welds, missing or worn parts and loose bolts before each towing trip.** Be sure to use Loctite® Red on all bolts and tighten to the recommended specifications.
3. **It is the owner's responsibility to hook up all towing equipment per manufacturer's instructions/recommendations.**
4. Remove the attachment tabs when not in use (if applicable).

Notice To Baseplate Installer

1. It is YOUR responsibility to watch for:

- Oil cooler and air conditioner lines
- Electrical wires and hoses
- Missing parts or attaching points on the frame

** If the baseplate is improperly installed and is against a wire or hose, it could cause fluid leaks or electrical shorts some time after the actual baseplate installation.

Permanent Baseplate Safety Cable Installation

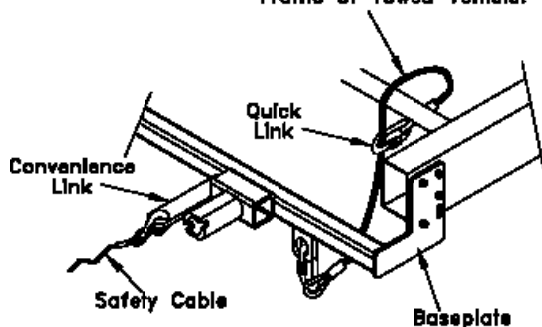
Permanent baseplate safety cables are strongly recommended when towing a vehicle with a tow bar. The principle function of the permanent baseplate safety cables is to prevent the towed vehicle from breaking loose in the event the connection between the frame of the towed vehicle and the baseplate fails or becomes disconnected. The cables must be connected from the baseplate to the frame rail or cross member of the vehicle's frame. The illustrations below show the possible arrangements recommended by Blue Ox®. Each permanent baseplate safety cable must have an adequate weight rating for the towing system. The weight rating of the two (2) cables together will not qualify.

Do not mount the permanent baseplate safety cables against wires, hoses or brake lines.

These permanent baseplate safety cables should remain installed as long as the baseplate is installed on the vehicle. Permanent baseplate safety cables are to be used in conjunction with, and NOT a replacement for legally required safety cables attaching the towed vehicle to the towing vehicle.

OPTION #1

Permanent Baseplate Safety Cables to Cross Member or Frame of Towed Vehicle.



OPTION #2

Permanent Baseplate Safety Cables to Cross Member or Frame of Towed Vehicle.

