



# Roof Rack Installation Instructions

P/N 210511, 210511.1: Winnebago Revel Roof Rack

## Before you begin:

- *Stainless steel hardware may bind together when tightening — apply an anti-seize assembly lubricant to the threads of each bolt before assembly*
- *This installation requires two or more people*
- *Unless otherwise specified, refer to the general torque value at the end of the instructions for specified torque values*



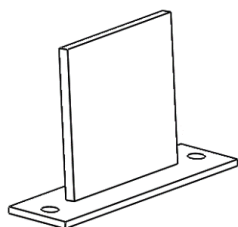
## Required Tools:

- Standard wrench set, socket set
- Drill, Standard Drill Bit Set
- Phillips Head Screw Driver
- Chisel or Heavy Duty Scraper
- Sharp Knife or Razor Blade
- Mallet
- Wire Cutters, Zip Ties

## Included Hardware:

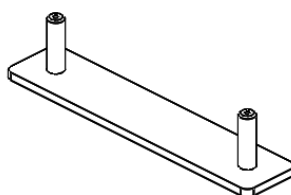
<b>P/N</b>	<b>Description</b>	<b>Quantity</b>
70008	¼-20 Nylock Nut, SS	30
70009	¼" Flat Washer, SS	44
70039	¼" Fender Washer, SS	8
70060	¼-20 x 1" Button Head Bolt, SS	22
70726	#14 x ¾" Self-Tapping Bolt, SS	10
70246	Anti-Seize Packet, 2g	1

## Included Bracketry:



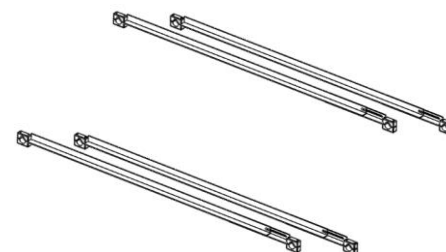
**x5**

Revel Roof Rack  
Awning Channel Bracket



**x4**

Sprinter Roof Rack  
Roof Track Bracket



**x2 pairs**

Solar Panel Mounts  
(preassembled)



### Installation Instructions

1. Unplug the solar leads from your roof mounted electrical box, cut the zip ties and remove the solar panels from your stock roof rack.
2. Wrap the solar leads in electrical tape to prevent accidental discharging or conduction while you're handling the panels. Carefully set the solar panels aside.



**Figure 1.** Solar Panels removed from stock rack.

3. Unplug any other lights or electrical accessories on your rack from the wire harness



**Figure 2.** Electrical accessories disconnected.

4. Loosen the crossbars on your stock reel rack by turning the knobs until the crossbar can slide back and forth.



**Figure 3.** Loosening crossbars.

5. Remove the end caps from both side rails so that you can slide your stock crossbars off the back of the rack.



**Figure 4.** Removing end caps (red) from side rails.



6. Remove the bolts from the drivers side track to unmount one side of the roof rack.
7. Remove the remaining crossbars from the rack by tilting the side rails and sliding your crossbars over any vents or protrusions from the roof.
8. Remove the front panel from the stock rack by unbolting the mounting brackets. Carefully set your light bar on top of the roof until you can mount it again to your Aluminess rack.



**Figure 5.** Remove front panel and set light bar aside.

9. Remove the driver side rail from the roof track.



**Figure 6.** Remove drivers side rail once all bolts are removed.

10. Unmount the awning side of your roof rack by drilling out the awning bracket rivets. You may need to cut the sealant around the brackets as well, as they may glue the brackets to the awning track.



**Figure 7.** Drill out rivets and cut sealant around awning brackets to unmount one side of your roof rack.

11. Once all brackets are drilled out and sealant is cut, you can begin to remove the passenger side rail by sliding it out of the awning track.
12. You may need to hit the back end of the passenger side rail with a mallet in order to move it through the sealant on the track.



**Figure 8.** Remove passenger side rail.



13. Clean off the top of your roof with an air hose or a broom to clear any aluminum chips from your stock rack removal.
14. Install the Aluminess Awning Channel Bracket by sliding it into the awning track. The bottom flange with mounting holes should catch inside the awning track profile, as shown in **Figure 9**. Evenly space all the brackets provided.



**Figure 9.** Awning channel bracket in awning track.

15. Slide in the roof track mounting brackets through the back of the track on the driver side of the van.
16. Lay the roof rack on your vehicle and verify placement of each Awning Channel Bracket now with the rack laid on top.
17. When you have bracket placement verified, remove the rack and install the Awning Channel Brackets with the provided self-drilling bolts.
18. With each bracket now bolted down, lay the Aluminess roof rack back onto the roof and settle on top of bracketry.



**Figure 10.** Installed awning channel bracket with roof rack placed on roof.

19. To fasten your roof rack to the awning channel brackets, drill mounting holes on the flat mounting surface of the rack, through the bracket and bolt together with the provided  $\frac{1}{4}$ " hardware.



**Figure 11.** Drill holes above the mounting brackets and bolt together one at a time to install the roof rack on the awning side of your vehicle.

20. Complete this process for each of the mounting brackets installed in your awning track.
21. Install the driver side of the rack by fastening the provided  $\frac{1}{4}$ " nuts and washers to the roof track brackets on each driver side foot.
22. Verify all hardware is tightened down to the vehicle.
23. Install your solar panel brackets in the desired location, bolt down to the side rails of the rack and reinstall your solar panels. Reroute your solar wiring back to the roof mounted electrical box and plug everything back in.
24. Mount your solar panels to the angle mounts provided using  $\frac{1}{4}$ " hardware, 3 bolts per side.
25. Clear your roof of aluminum chips, residual sealant and any other waste using an air hose or a broom.
26. Enjoy your new set up!





<b>General Torque Values</b>			
<b>Size</b>	<b>Stainless Steel</b>	<b>Zinc</b>	<b>Grade 8</b>
#6-32	10 lb-ft	--	--
#8-32	18.4 lb-ft	--	--
#10-32	26.6 lb-ft	--	--
1/4"-20	5.3 lb-ft	7.8 lb-ft	9 lb-ft
5/16"-18	10.9 lb-ft	16 lb-ft	18 lb-ft
3/8"-16	19.4 lb-ft	28.3 lb-ft	33 lb-ft
7/16"-14	31 lb-ft	45 lb-ft	52 lb-ft
1/2"-13	47 lb-ft	69 lb-ft	80 lb-ft
M6	4.7 lb-ft	5.8 lb-ft	--
M8	11.3 lb-ft	14.1 lb-ft	--
M10	22.3 lb-ft	27.9 lb-ft	--
M12	38.9 lb-ft	48.7 lb-ft	--



Aluminess Products, Inc. (Aluminess) Warranty

1. Lifetime Warranty. Aluminess provides a lifetime warranty of its products to the original retail purchaser provided such products are installed correctly according to the official Aluminess installation instructions. Any modification to the original product design, function or use of any Aluminess products will void the Aluminess warranty. Aluminess will have sole discretion to determine warranty eligibility for any and all Aluminess products sold to any purchaser.
2. Limited Remedies. Subject to any limitations and exclusions described herein, and subject to Aluminess' determination of warranty eligibility, Aluminess will remedy defects in product materials and/or workmanship of any product by repairing or replacing such defective product, which shall be within Aluminess' sole discretion, without charge for parts or labor. Aluminess may elect in its sole discretion not to replace a defective product and issue the purchaser a refund equal to the purchase price of any defective product or purchaser may elect to receive a credit (equal to such refund) toward the purchase of new Aluminess products. Repair or replacement of a defective product or providing a refund or credit to purchaser will be purchaser's exclusive remedy under this warranty. Damage to a purchaser's vehicle, cargo and/or any other person or property is expressly excluded from the Aluminess warranty.
3. Modification. Aluminess products are designed to be mounted to factory equipped vehicles. Aftermarket additions to such vehicle may or may not require modification of an Aluminess product. The Aluminess warranty does not extend to any Aluminess products that are modified to fit around other otherwise accommodate or be compatible with any aftermarket vehicle accessories or alterations. Aluminess does not guarantee fitment with any other aftermarket accessories or modified vehicle, and it is up to purchaser to determine fitment prior to purchasing any Aluminess product.
4. Damage. Damage to Aluminess products due to normal wear and tear, including, but not limited to, cosmetic issues and superficial scratches, or structural damage to an Aluminess product in connection with any vehicle collisions or other structural degradation in connection with the use of such vehicle (on road or off road) will not be covered by the Aluminess warranty. Additionally, any product user's misuse, neglect, overloading, improper maintenance or improper installation or repair of any Aluminess products are not covered under the Aluminess warranty.
5. Use of the Products. Aluminess products are designed for off road vehicle use. Installing Aluminess products on a vehicle may exceed the factory designed capabilities of such vehicle and could potentially lead to vehicle damage. Aluminess will not be responsible for any damage caused to a purchaser or user's vehicle or any vehicle accessories caused by the use of any Aluminess products. It is to the sole responsibility of purchaser to inspect and ensure that the intended vehicle and Aluminess products are suitable and compatible for travel on road and off road. No seller nor any manufacturer of Aluminess products will be liable for any loss, damage or injury directly or indirectly arising from the use of any Aluminess products. Before using any Aluminess products, the purchaser or user will determine the suitability of the product(s) for their intended use(s) and the purchaser or user shall assume all responsibility and risk in connection therewith.
6. DISCLAIMER. THE ALUMINESS WARRANTY IS EXPRESSLY MADE IN LIEU OF ANY AND ALL OTHER WARRANTIES, AND EXCEPT FOR THE ALUMINESS WARRANTY SET FORTH HEREIN, ALUMINESS MAKES NO WARRANTY WHATSOEVER WITH RESPECT TO ANY ALUMINESS PRODUCT, INCLUDING ANY WARRANTY OF MERCHANTABILITY AND FITNESS FOR A PARTICULAR PURPOSE, WHETHER EXPRESS OR IMPLIED BY LAW, COURSE OF DEALING, COURSE OF PERFORMANCE, USAGE OF TRADE, OR OTHERWISE.  
  
EXCEPT FOR PURCHASER'S LIMITED REMEDIES SET FORTH HEREIN, IN NO EVENT WILL ALUMINESS BE LIABLE FOR ANY LOST PROFITS, LOST SALES, OR FOR ANY CONSEQUENTIAL, DIRECT, INDIRECT, INCIDENTAL, SPECIAL, EXEMPLARY OR PUNITIVE DAMAGES OR FOR ANY OTHER DAMAGES OF ANY KIND OR NATURE.
7. Compliance. Aluminess cannot guarantee that its products comply with all Federal, State, and/or local laws. Purchaser is advised to review local vehicle codes for compatibility prior to purchase to ensure that the installation and use of any Aluminess products does not violate any applicable laws.
8. Warranty Claim Submission. Purchaser will responsible for returning any defective product to Aluminess for warranty consideration and purchaser may be responsible for all costs associated with shipping the product to and from Aluminess. Prior to returning any product for warranty, purchaser must contact Aluminess Products Inc. for proper authorization.