



**Read through all of the instructions completely before beginning the install.**

**Parts Included:**

- 2 x PRP Seats Suspension Seats for Yamaha YXZ
- 4 - Mounting Brackets (2 for driver side, 2 for passenger)
- 8 - 20 mm long (8mm x 1.25mm) bolts  
(for bolting down brackets)
- 4 - 5/8" long (5/16" - 24) bolts  
(for bolting down seats)
- 4 x Locking washers

*For mounting harnesses (optional):*

- 2 x 1 1/4" long (1/2" - 13) Bolt
- 4 x 1/2" Flat Washer
- 2 x 1/2" Nylock (1/2" - 13) nut

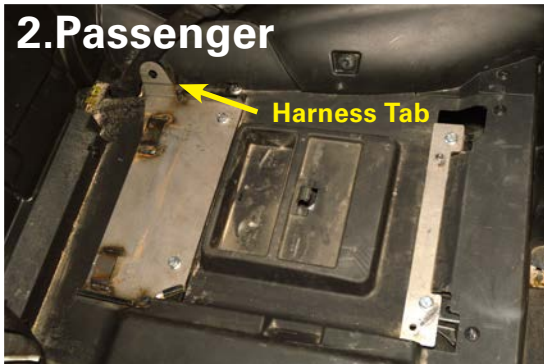
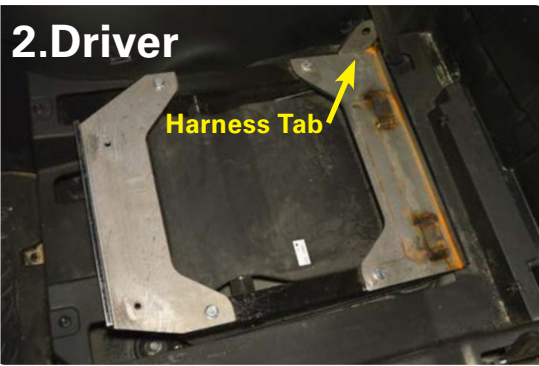
**Tools required:**

- 12mm socket
- 1/2" socket
- 2 x 3/4" box end wrenches (for harness hardware)

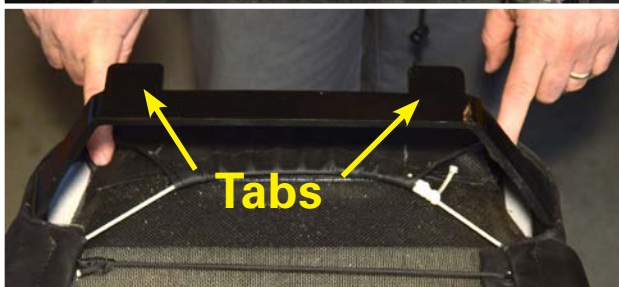
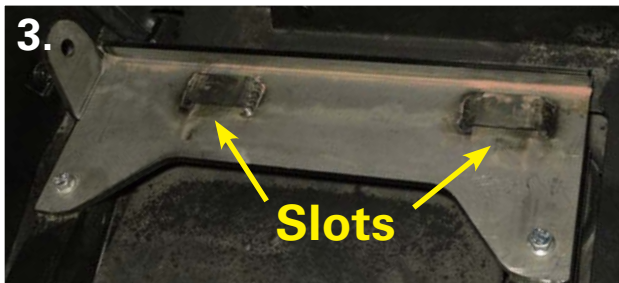
**Remove all parts from the box and unwrap completely using the packaging to lay out the pieces.**

**Time:**

Approx 15 minutes.



*Mounts are shown above without powder coating for visibility.*



### 1. Remove stock seats

Remove the bottom seat cushion from stock seat. Using the 12mm socket, remove the 4 bolts holding the seat in and remove entire seat assembly.

### 2. Install YXZ Seat Brackets

Separate the passenger side from the driver side mounts, noting the front and rear pieces.

**NOTE:** The vertical harness tabs should be positioned to the rear and towards the center of the vehicle.

Install each side using the 8mm bolts provided.

### 3. Install seats

**NOTE:** The two slots at the rear of the mounts as well as the two tabs at the rear of the seat.

Slide either seat of the pair (they are universal) into the slots in the seat base.

Using the supplied 5/8" bolts and washers, attach the front "feet" of the seat to the seat base using your 1/2" socket.

The mount is threaded so there is no nut necessary.

### 4. Aaaaaand, your done!

Congratulations! Your new PRP Seats are installed and ready to use.

If you have any questions or experience issues, please contact your retail outlet first for help. However, the staff at PRP is always happy to help at **1-800-317-6253**.

**Thank you! Ride Safe!**