



baja designs®
THE SCIENTISTS OF LIGHTING

**Toyota Tundra 22-on 9 XL Linkable Roof Kit
(44-8158)**



2950 Norman Strasse San Marcos, CA 92069

Phone 760-560-2252 X3 • Fax 760-560-0383

info@bajadesigns.com • www.bajadesigns.com



baja designs[®]
THE SCIENTISTS OF LIGHTING

LIMITED LIFETIME WARRANTY

Baja Designs proudly offers a LIFETIME WARRANTY against manufacturer's defect on all the products that we manufacture.

These are comprehensive warranties; other than the exclusions below – you're covered. If your LED or HID bulb burns out, you're covered. Additionally, cutting off our connector or changing your lenses does not automatically void your warranty.

Exclusions:

Installation errors, abuse, misuse, or crash damage. You must be the original owner of the product and can supply proof of purchase.

Baja Designs manufactures its own products as well as resells products manufactured by others. Baja Designs makes no express or implied warranties on products not manufactured by Baja Designs including without limitation any warranties or merchantability and fitness for a purpose. We will, however, pass on all warranties made by the manufacturer, who has sole responsibility for performing such warranties.

Baja Designs will pay the freight if your product is less than 90 days old, otherwise defective products must be returned to Baja Designs, Inc., freight prepaid. At our option, we will repair or replace items in question and return them at no charge. If the identical product is no longer available, we will replace it with a similar product of equal value. Baja Designs Inc. will not be responsible for any indirect or consequential damages in connection with defective merchandise.

Items purchased through a Baja Designs authorized dealer must be returned through the dealer. Only available on LED auxiliary lights and product must be in sellable condition at MSRP. Product that has been damaged in any way after the original purchase date will be excluded from this guarantee.

Indemnification:

Buyer hereby acknowledges off-roading, racing and driving at night are dangerous activities and that the products and/or supplies purchased from Baja Designs are used in an inherently dangerous activity that may endanger life and limb; and in no event shall the seller, or seller's heirs and assigns, be held liable for consequential damages, nor shall seller's liability on any claim for damages arising out of or connected with the sale, delivery, or use of purchased products and/or supplies exceed the purchase price of the products and/or supplies.

Buyer is responsible for ensuring that it uses the products (and its vehicle) in accordance with all applicable laws, regulations, guidelines, and standards of care. Buyer acknowledges that some products may only be used when off-roading, and Buyer will comply with all vehicle and road safety guidelines. Buyer is solely responsible for (and will indemnify and hold Bestop harmless for) any claims, losses, damages, fines, fees, costs, or other amounts arising out of Buyer's non-compliance with these provisions.

****For a color copy of instructions, visit your vehicle specific application on BajaDesigns.com ****

Required Tool(s):

- 10mm, 12mm, 7/16" wrench
- Flathead screwdriver
- Trim removal tool
- T25, T30 Torx

- 10mm, 7/16" socket
- 3/16", 5/32" Allen wrench
- Drill and 1/8"-3/4" drill bits
- Glass cleaner

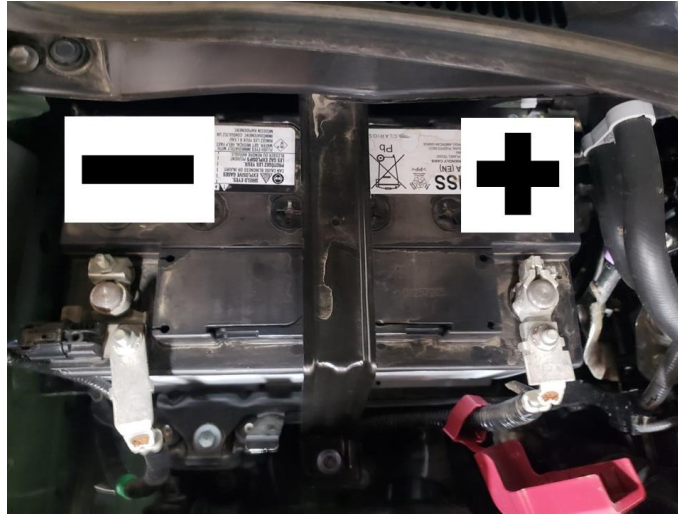
- Silicone sealant (Sikaflex221)
- Scissors
- Tape measurer

Parts List:

 <p>(74-9007) (Qty: 1) 9 XL Linkable</p>	 <p>(64-0266) (Qty: 1) 9 XL Linkable Harness</p>	 <p>(64-0308) (Qty: 1) 9+ XL Linkable Vehicle Harness</p>	 <p>(Qty: 2) Offset Linkable Preload</p>
 <p>(20-1612) (Qty: 14) 8" Zip tie</p>	 <p>(61-0015) (Qty: 1) Wire Hider, 3ft</p>	 <p>(44-9401) (Qty: 1) DS Tundra Roof Bracket</p>	 <p>(44-9402) (Qty: 1) PS Tundra Roof Bracket</p>
 <p>(20-1026) (Qty: 6) M6 x 18mm Steel Washer</p>	 <p>(20-1376) (Qty: 6) 1/4"-20 x 1.75" Bolt</p>	 <p>(20-1282) (Qty: 6) 1/4" Flat Washer</p>	 <p>(20-2316) (Qty: 6) Spacer 1/2" OD x 1/4" ID x 5/8"</p>

To begin, make sure the vehicle is in park, on level ground and the parking brake is engaged.

Step 1:



Disconnect the negative battery cable using a 10mm wrench.

Step 2:



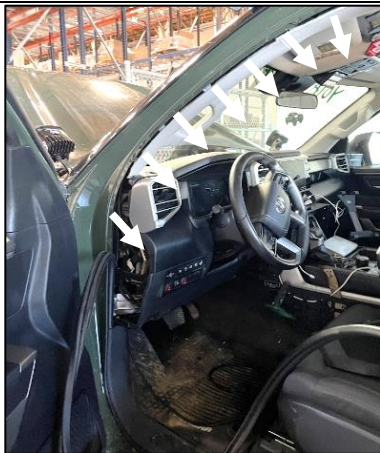
Remove the upper console by gently pulling down from the edge nearest the windshield until the console is free.

Step 3:



Carefully press in on the locking tab of the electrical connector to release it from the upper console. Place console assembly onto a soft work surface.

Step 4:



Partially remove the driver door seal to allow for removal of the A and B Pillar trim. Gently squeeze the two caps on the driver-side A Pillar handle to remove. Using the 10mm socket, remove the two circled bolts. Carefully pull until the A Pillar panel releases and remove.

Step 5:



Pull down the driver side rear door trim. Carefully pry the base of the B Pillar to release the locking tabs. Using a flathead screwdriver, release the center section of the two push rivets and remove the entire push rivet.

Step 6:



Gently squeeze the two caps on the driver-side B Pillar handle and pull to remove. Using the 10mm socket, remove the two circled bolts. Pry outward on the top of the B Pillar trim and allow the trim piece to hang down supported by the seat belt.

Step 7:



Using a small flathead screwdriver or trim tool, remove the cap on the driver side clothes hanger hook. Pinch the bottom of the metal hardware and pull down to remove. Pull to remove the hook.

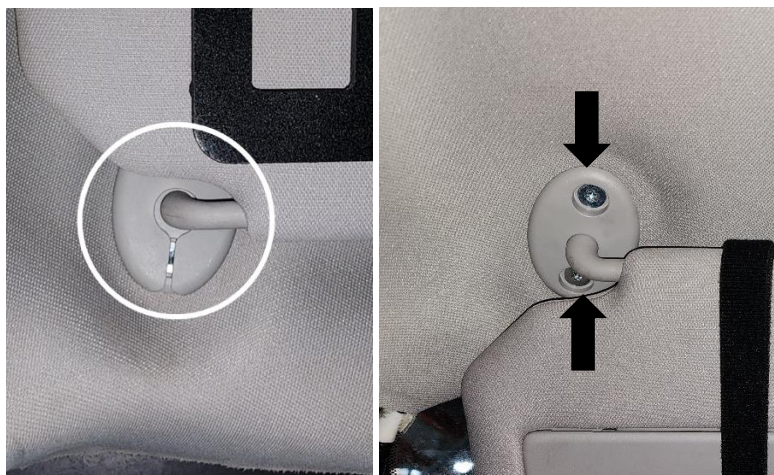
Repeat steps 4-7 for the passenger side.

Step 8:



Pull down on the small plastic trim piece behind the rear-view mirror to remove. Pull the larger trim panel down parallel to the windshield to remove. Using a T25 Torx, loosen the bolt holding on the rear-view mirror and remove the mirror. Disconnect the two sensors on the windshield.

Step 9:



With a trim removal tool, remove the sun visor bolt cover. Remove the bolts securing the visor to the roof using a T30 Torx. Remove the sun visor. Twist the inboard visor catch 45 degrees then pull down to remove. Repeat for the passenger side. Extend the driver and passenger headrests and slowly lower the headliner.

Step 10:



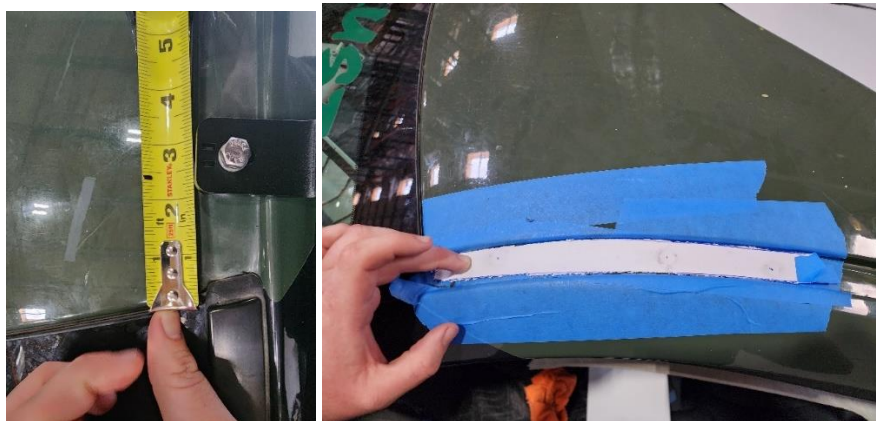
Disconnect the driver side airbag at the base of the A-pillar. Using a 10mm socket, remove the first three bolts attaching the airbags to the truck. Gently pull the black plastic backing to release the clips.

Step 11:



Mask off the roof of the truck around the A-pillar. This should extend from the windshield back 18" and cover both sides of the gutter.

Step 12:



Take the driver side roof bracket and place it on the roof. Measure two inches from the edge of the windshield to the front edge of the bracket. Use the bracket to mark the center of each hole. The holes should be in the middle of the gutter.

Step 13:



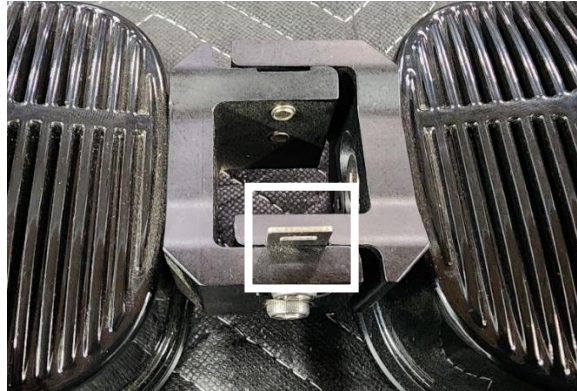
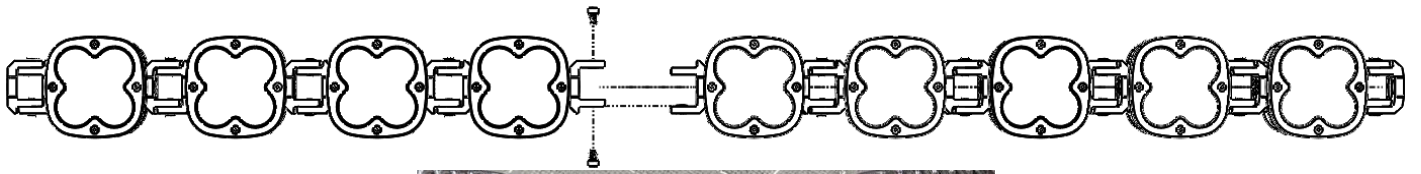
Drill pilot holes using an 1/8" bit. Using increasing bit sizes, drill holes out to 9/32". Make sure the holes are drilled perpendicular to the roof. Drill bit stops are recommended to reduce the risk of damaging the airbags. Using a 1/2" drill bit, carefully remove the foam material around the hole down to the metal. **DO NOT DRILL THROUGH THE ROOF WITH THE 1/2" BIT.** Repeat steps 10-13 on opposite side.

Step 14:



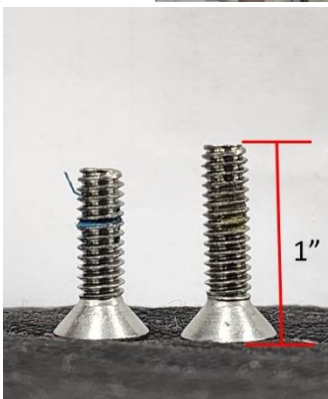
Add silicone sealant to the newly drilled holes and place the spacers in. Add sealant to the top of the spacers and set the bracket on top. Add a small amount of silicone around the 1/4"-20x1.75" bolt heads and insert the bolt through the bracket and spacer. Use the larger fender washer and nyloc nut underneath the roof to secure the bracket to the roof. Repeat for the other two holes. Leave these bolts slightly loose until the light is installed. Repeat for opposite side.

Step 15:



Place a towel down on a clean workbench. Using a 3/16" Allen wrench, attach the two halves of the XL Linkable together with the included four 1/4"-20x7/16" socket head cap screw. Make sure to attach the zip tie tab in the lower rear link slot.

Step 16:



With the light face down and working from left to right, separate the links between the 3rd and 4th light. With a 5/32" Allen wrench, remove the two countersink bolts attaching the link to the 3rd light. Locate one of the included Pre-Load Bases and two of the 1/4"-20x1" countersunk bolts. Reattach the link to the light using the 1/4"-20x 1" bolt and sandwiching the Pre-Load Base between the light and link. Angle the Preload base slightly upward and ensure the link is parallel to the light. Repeat step 7 with lights 6 and 7 and attach the Preload base to light 6.

Step 17:



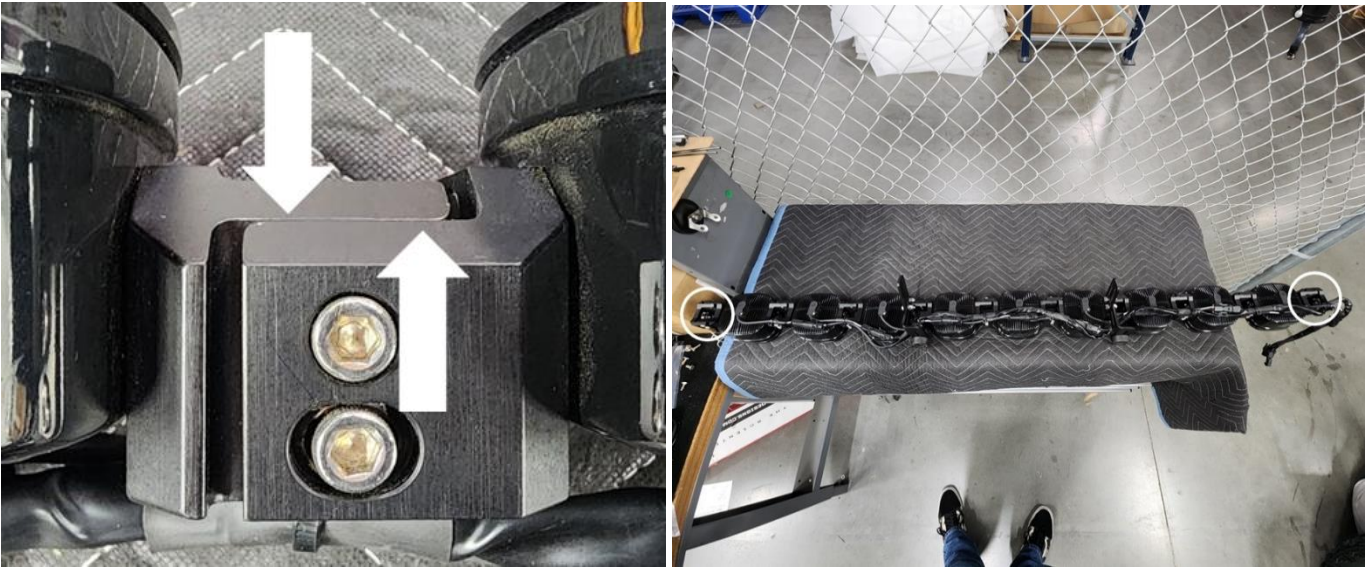
With a 7/16" wrench and socket, attach the Rubber Bump Stop to the Offset Preload Base Extension bracket using the 1/4"-20 x 1" hex head bolt, 1/4" oversized washer, 1/4" washer and 1/4"-20 nylock nut. Loosely attach the assembly to the Pre-Load Bracket using two 1/4"-20 x 7/8" Hex head bolts, four 1/4" washers and two 1/4" nylock nuts. Repeat step for the other side.

Step 18:



Starting from the left side of the light, connect all the 2-pin connectors (white circles) of the 9XL harness to the individual lights. Attach the harness to the back of the XL Linkable using the included zip ties and zip tie tabs. Make sure the 3-pin connectors (black circle) ends up on the passenger side of the light.

Step 19:



Place the light face down and ensure all the bezels are flat and parallel. This will help ensure there is no twist within the Linkable. Loosen the bolts connecting the 1st and second light. Angle the lights so the front edges of the links are parallel and tighten the bolts. Repeat this moving from left to right till the light bar is fully arced. Leave the outer most links loose until the light is installed.

Step 20:



With the help of an assistant, install the light bar into the brackets using four ¼"-20x1" flat head bolts, four ¼" washers, and four ¼" nylock nuts. The light should be aimed level or 1° downward with the nuts outside the bracket. Completely tighten the roof bracket bolts on both sides. Tighten the end link bolts.

Step 21:



Position the Pre-load brackets so the rubber bumps are along the upper edge of the windshield frame. Having the preload bump too far back will result in dents forming on the roof. Apply the 3M clear vinyl patch to the roof underneath the rubber Pre-load bump. Apply slight upward pressure to the XL Linkable and with the help of an assistant, tighten the bolts attaching the Preload extension bracket to the Preload bracket. Repeat step on the other side.

Step 22:



Place the 3' wire hider in the sun to allow it to relax and become malleable. Once easily workable, place the wire hider on the passenger side of the windshield along the A-pillar and cut it to length. In a well-ventilated area, apply the primer to the back using the foam-tipped applicator. Attach the 3M double-sided strips to the primed area. Thoroughly clean the windshield and remove the red tape from the double-sided strips. Attach the wire hider to the windshield and press down to ensure strong adhesion. Allow it to sit for 10 minutes before proceeding.

Step 23:



With a 10mm wrench, remove the chassis ground bolt near the battery. Attach the relay and reinstall the bolt. Detach the plastic trim between the A- Pillar and cowl (circled). Run the light end of the harness through the opening and plug into the XL Linkable. Using zip ties, secure the connector and harness to the PS bracket utilizing the zip tie slots. Tuck the wire into the wire hider and reattach the cowl trim.

Step 24:

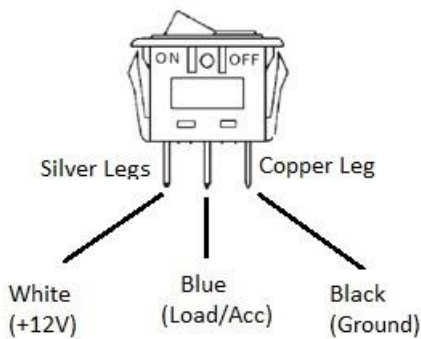


Select a location on the dash for the switch. A suggested location is outlined in the photo. Check for clearance behind the panel and drill a $\frac{3}{4}$ " hole for the switch. To access behind this panel, remove the dash endcap by carefully prying from the bottom of the panel. Take a reference photo of the switch wiring and remove the wires.

Step 25:

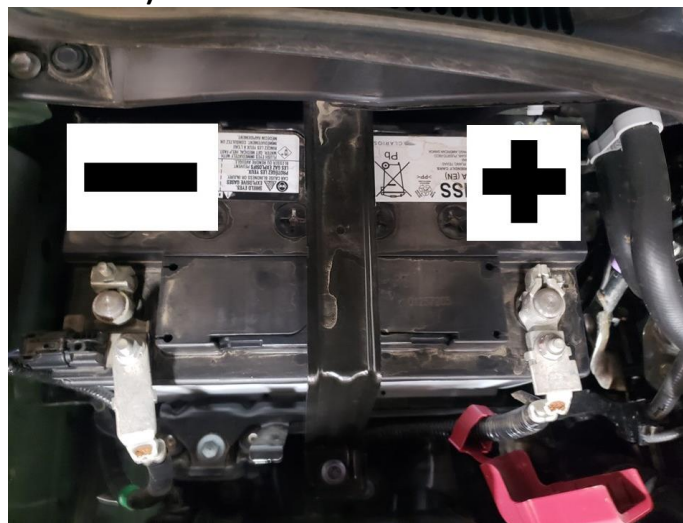


BD Lighted Rocker



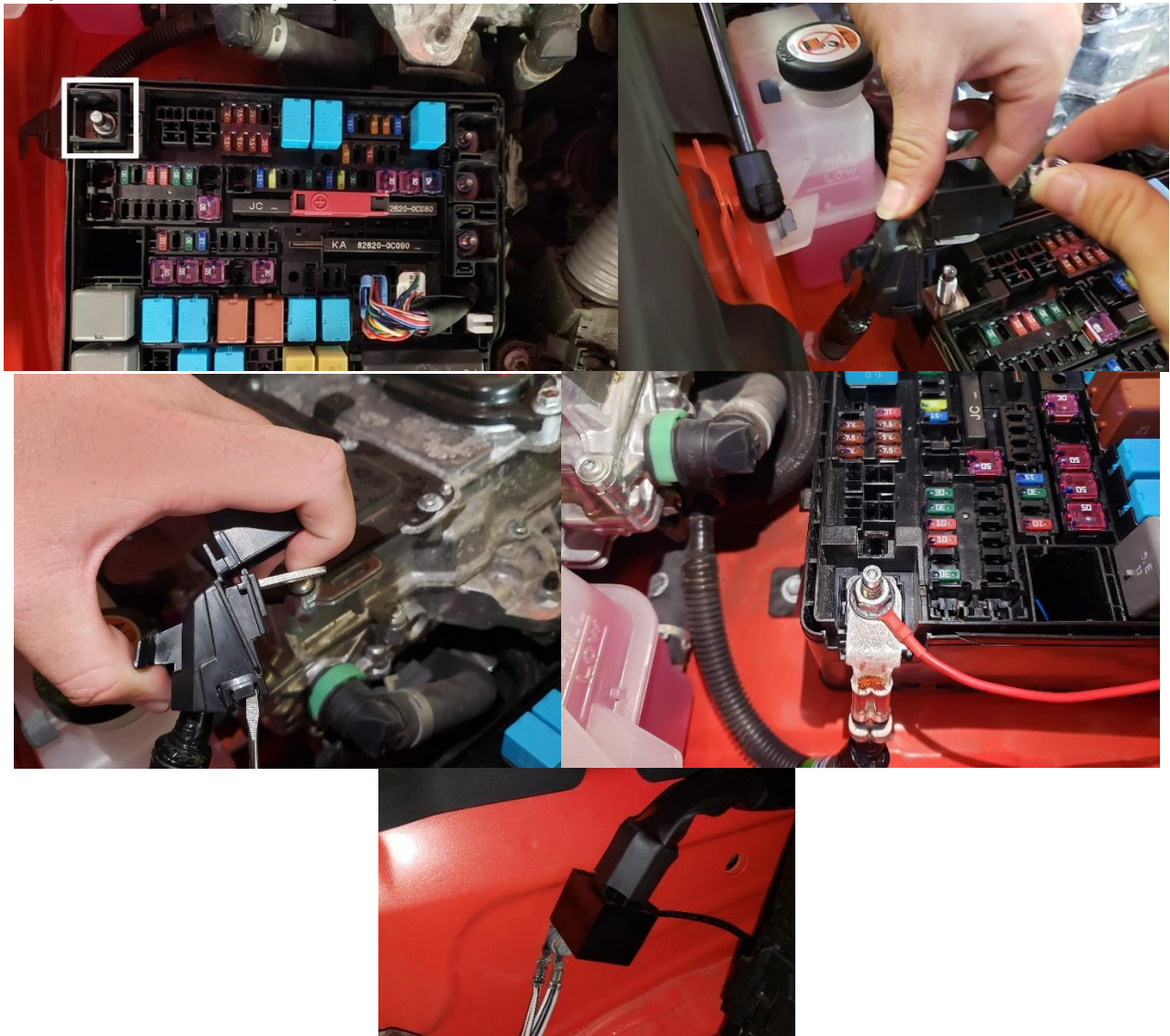
Run the switch lead along the firewall and to firewall passthrough located to the right of the brake master cylinder. Pass the wires through the wire passthrough and switch hole. Plug in the switch wires and install the switch into the hole.

Step 26: (NON-HYBRID MODELS ONLY)



Using a 12mm wrench, attach the positive ring terminal to the positive battery cable and the negative ring terminal to the negative battery. Reattach the negative battery cable to the battery using a 10mm wrench. Test the light to ensure the light works properly and is aimed correctly.

Step 27: (HYBRID-MODELS ONLY)



Remove the passenger side fuse panel cover and locate the positive battery wire and post (boxed). Using a 12mm socket, remove the nut holding down the wire and release the tab to the right of the post. Lift to remove the wire and plastic wire cover. Twist to pull apart the top of the plastic cable cover until it resembles the third photo. Using a flat head screwdriver, release the 2 tabs on the bottom of the plastic wire cover until the two halves separate and remove them from the wire. Discard the piece that the wire terminal runs through. Replace the battery cable and install the positive (red) ring terminal of the main wiring harness onto the post. Replace the upper battery cable cover, reinstall the 12mm nut and replace the fuse box cover. Using a 10mm socket, remove the common ground bolt that the main harness relay is secured to and install the negative (black) ring terminal. Replace the ground bolt. Plug the light into the wiring harness and test it.

*Tie all wires away from sharp, hot, and/or rotating components.

* Re-torque all the fasteners after 100 miles.

*Your install is now complete! Thank you for choosing Baja Designs.