



**baja designs**<sup>®</sup>  
THE SCIENTISTS OF LIGHTING

**(44-8129) – (44-8134)  
(2014-2018) Mercedes Sprinter Van Fog Pocket Kit**



2950 Norman Strasse • San Marcos • CA • 92069

Phone 760-560-2252 X3 • Fax 760-560-0383

info@bajadesigns.com • [www.bajadesigns.com](http://www.bajadesigns.com)



**baja designs**<sup>®</sup>  
THE SCIENTISTS OF LIGHTING

## LIMITED LIFETIME WARRANTY

Baja Designs proudly offers a LIFETIME WARRANTY against manufacturer's defect on all the products that we manufacture.

These are comprehensive warranties; other than the exclusions below – you're covered. If your LED or HID bulb burns out, you're covered. Additionally, cutting off our connector or changing your lenses does not automatically void your warranty.

### **Exclusions:**

Installation errors, abuse, misuse or crash damage. You must be the original owner of the product and can supply proof of purchase.

Baja Designs manufactures its own products as well as resells products manufactured by others. Baja Designs makes no express or implied warranties on products not manufactured by Baja Designs including without limitation any warranties or merchantability and fitness for a purpose. We will, however, pass on all warranties made by the manufacturer, who has sole responsibility for performing such warranties.

Baja Designs will pay the freight if your product is less than 90 days old, otherwise defective products must be returned to Baja Designs, Inc., freight prepaid. At our option, we will repair or replace items in question and return them at no charge. If the identical product is no longer available, we will replace with a similar product of equal value. Baja Designs Inc. will not be responsible for any indirect or consequential damages in connection with defective merchandise.

Items purchased through a Baja Designs authorized dealer must be returned through the dealer. Only available on LED auxiliary lights and product must be in sellable condition at MSRP. Product that has been damaged in any way after the original purchase date will be excluded from this guarantee.

### **Indemnification:**

**Buyer hereby acknowledges off-roading, racing and driving at night are dangerous activities and that the products and/or supplies purchased from Baja Designs are used in an inherently dangerous activity that may endanger life and limb; and in no event shall the seller, or seller's heirs and assigns, be held liable for consequential damages, nor shall seller's liability on any claim for damages arising out of or connected with the sale, delivery, or use of purchased products and/or supplies exceed the purchase price of the products and/or supplies.**

**Buyer is responsible for ensuring that it uses the products (and its vehicle) in accordance with all applicable laws, regulations, guidelines, and standards of care. Buyer acknowledges that some products may only be used when off-roading, and Buyer will comply with all vehicle and road safety guidelines. Buyer is solely responsible for (and will indemnify and hold Bestop harmless for) any claims, losses, damages, fines, fees, costs, or other amounts arising out of Buyer's non-compliance with these provisions.**

## **Tools Required**

- \*T-15 Torx
- \*10mm Socket
- \* Trim removal tool
- \* 4mm Allen wrench
- \* Sharp blade

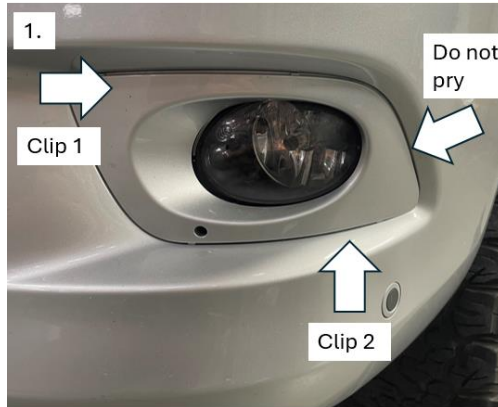
**To begin, make sure the vehicle is in park, on level ground and the parking brake is engaged.**

1. Using a trim removal tool, remove the plastic fog light bezel by disengaging the two clips. Tabs are marked with arrows. (Driver side shown).

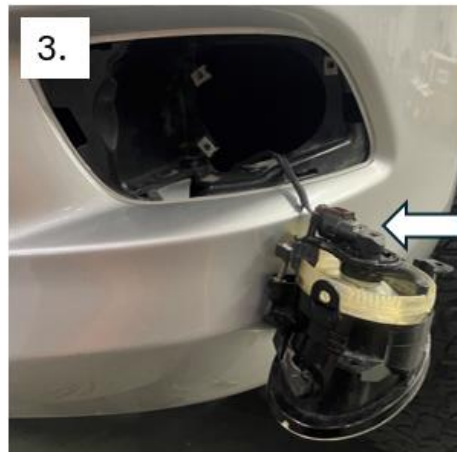
**\*Do not pry at the outer edge as this could damage the bezel\***

2. Using a T-15 Torx bit, remove the three fasteners (See photo) securing the light to the vehicle and carefully remove the light. Keep hardware as it will be reused.

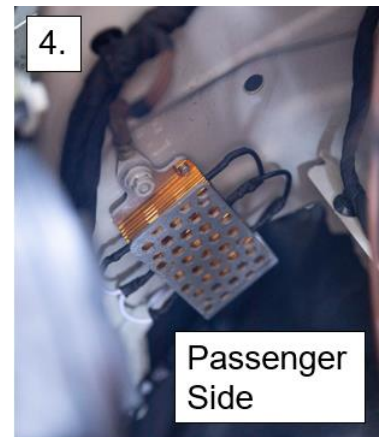
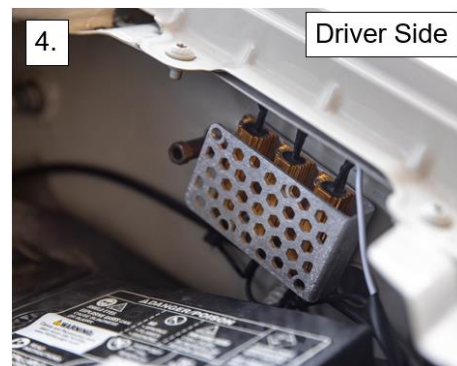
**\*Careful to not drop a screw behind the bumper as some areas are not easily accessible\***



3. Push the release tabs on the OEM fog light connector. Carefully unplug the light from the harness. Put the light away in a safe place.



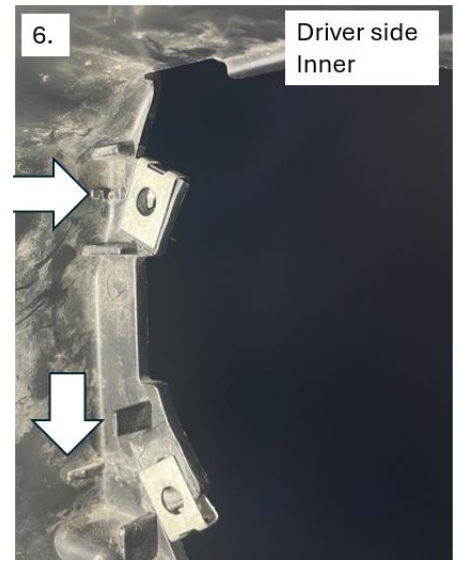
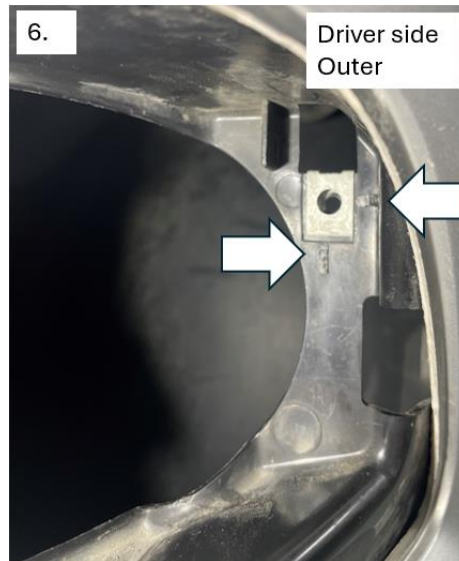
4. Locate a bolt on the inside of the engine bay such as the chassis ground pictured. Remove the bolt and install the resistor bracket using the provided mounting location. Run the wires down into the fog pocket location.



5. Plug in the connector pictured to the OEM fog light connector and leave the 2-pin weather pack out ready to receive the Squadron connector.



6. Use a sharp blade to trim the indicated tabs flat (Driver side pictured).



7. Install the larger metal bracket to the plastic shroud at the longer mounting tab on the shroud. Use a 10mm socket and a 4mm Hex key to install the M6 Button head along with a nut and washer. Leave loose for now.  
**\* Install the bolt such that the head is towards the inside of the shroud\***

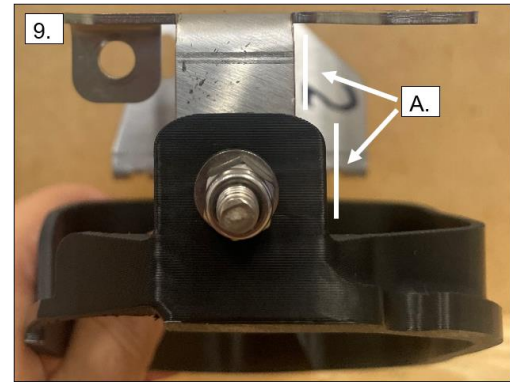


8. Install the smaller metal bracket onto the shorter mounting point on the shroud. Use a 10mm socket and 4mm Hex key to install an M6 Buttonhead, washer, and nut. Leave loose for now.

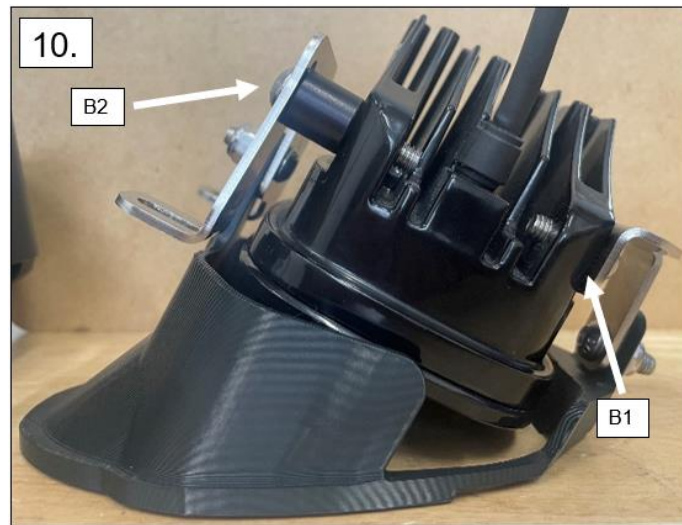
**\* Install the bolt such that the head is towards the inside of the shroud\***

9. Align the metal brackets making sure they are straight as shown in the figure provided (A). Tighten the brackets.

**\*Careful to not overtighten as the shroud can be damaged\***



10. Install the Squadron to both metal bracket's lower holes. Use a 4mm Hex key to install a small M6 Button head (B1) and a long M6 Button head (B2). The longer M6 buttonhead (B2) will require the use of the spacer provided and will go onto the larger metal bracket. Adjust the light until it is straight and tighten the bolts.



11. Connect your light to the adapter. Tuck your harness into the cavity.

12. Test your light functionality.



13. Install your light in the fog light opening and re-install the three fasteners removed in step 2. Make sure your fog light is sitting flat and not interfering with the tabs around the mounting location. Trim the tabs more if needed.

14. Re-install the trim panel removed in step 1. Make the 2 clips are engaged.

15. Repeat Steps 1-14 for the opposite side of the vehicle.



**If you want to disable the corner-illumination fog light feature, you can:**

- Turn off the automatic headlights and use the manual mode, or
- Contact your local dealership to assist in disabling the feature.

\*Tie all wires away from sharp, hot, and/or rotating components.

\* Re-torque all the fasteners after 100 miles.

\*Your install is now complete! Thank you for choosing Baja Designs.