



baja designs
The Scientists of Lighting

**2009-2014 Ford F150,
2010-2014 Ford Raptor,
A-pillar light mount kit**



2950 Norman Strasse Rd • San Marcos • CA • 92069

Phone 760-560-2252 • Fax 760-560-0383

info@bajadesigns.com • www.bajadesigns.com



baja designs[®]
The Scientists of Lighting

LIMITED LIFETIME WARRANTY

Baja Designs proudly offers a LIFETIME WARRANTY against manufacturer's defect on all the products that we manufacture.

These are comprehensive warranties; other than the exclusions below – you're covered. If your LED or HID bulb burns out, you're covered. Additionally, cutting off our connector or changing your lenses does not automatically void your warranty.

Exclusions:

Installation errors, abuse, misuse or crash damage. You must be the original owner of the product and can supply proof of purchase.

Baja Designs manufactures its own products as well as resells products manufactured by others. Baja Designs makes no express or implied warranties on products not manufactured by Baja Designs including without limitation any warranties or merchantability and fitness for a purpose. We will however, pass on all warranties made by the manufacturer, who has sole responsibility for performing such warranties.

Baja Designs will pay the freight if your product is less than 90 days old, otherwise defective products must be returned to Baja Designs, Inc., freight prepaid. At our option, we will repair or replace items in question and return them at no charge. If the identical product is no longer available, we will replace with a similar product of equal value. Baja Designs Inc. will not be responsible for any indirect or consequential damages in connection with defective merchandise. Items purchased through a Baja Designs authorized dealer must be returned through the dealer. Only available on LED auxiliary lights and product must be in sellable condition at MSRP. Product that has been damaged in any way after the original purchase date will be excluded from this guarantee.

Indemnification:

Buyer hereby acknowledges off-roading, racing and driving at night are dangerous activities and that the products and/or supplies purchased from Baja Designs are used in an inherently dangerous activity that may endanger life and limb; and in no event shall the seller, or seller's heirs and assigns, be held liable for consequential damages, nor shall seller's liability on any claim for damages arising out of or connected with the sale, delivery, or use of purchased products and/or supplies exceed the purchase price of the products and/or supplies.

Buyer is responsible for ensuring that it uses the products (and its vehicle) in accordance with all applicable laws, regulations, guidelines, and standards of care. Buyer acknowledges that some products may only be used when off-roading, and Buyer will comply with all vehicle and road safety guidelines. Buyer is solely responsible for (and will indemnify and hold Bestop harmless for) any claims, losses, damages, fines, fees, costs, or other amounts arising out of Buyer's non-compliance with these provisions.



baja designs
The Scientists of Lighting

F150 (09-15) and Raptor (10-15) A-Pillar kit

Tools Required

10mm Socket wrench (recommended), or 10mm traditional wrench.

1. Begin by opening the hood and locating the two 10mm hex head bolts near the windshield wiper cowl that hold the lower hood hinge assembly onto the truck. Passenger side is pictured below.



****Warning: while the hood is open, it is possible to remove the two bolts on either the driver or passenger side. This must only be done one side at a time to avoid the hood moving and it is strongly recommended to use an assistant to hold the hood open as a precaution.****

2. Remove the two bolts and set them aside for later use.



baja designs
The Scientists of Lighting

3. Now, it is time to orient the bracket inbetween the hood and the fender. Begin by holding your bracket upright next to where it will mount. The upper bent tab should appear bent away from the engine compartment. If it appears to be bent toward the engine compartment, the bracket is for the opposite side.



4. Tilt the bracket such that you can view the bottom side of the bracket.



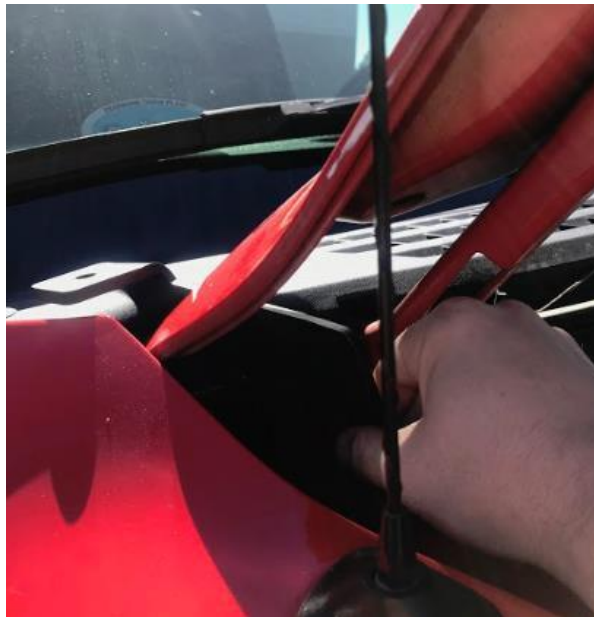


baja designs
The Scientists of Lighting

5. Carefully place the upper bent light mount tab through the opening at the base of the hood. It can be done without scratching the paint on the fender and hood. Take any precautions available. (masking tape, towel, extra patience, etc.)



6. Then twist the bracket into place while avoiding the edges of the hood and fender.





baja designs
The Scientists of Lighting

7. Under the bracket, place two washers under each bolt hole and thread in the 10mm bolts. Torque the bolts down before moving to the opposite side.
8. Repeat steps 2-7 for the opposite side of the vehicle.





baja designs
The Scientists of Lighting

Wiring Guide



1. Use the provided harness and connect both A-Pillar lights.
2. Determine a desired dash location for the toggle switch. Using a $\frac{3}{4}$ " stepped drill bit, drill a hole. Be mindful of what is behind the dash and remove dash if necessary.
3. Take a quick picture of the switch terminals for reference later. Remove the switch terminals from the switch, run the harness through the firewall and through the desired dash location. Reattach the toggle switch and press into the dash.
4. Connect the +12V (red wire) to the positive battery terminal and the -12V ground (black wire) to the negative battery terminal.

Upfitter Harness

- If you purchased the upfitter harness and 55" splitter you will connect the splitter and upfitter harness together. Connect the white wire to the axillary switch that you desire (confirm that the switch is rated for the A-Pillar lights that you will be installing).

Re-torque all fasteners after 100 miles.

Your install is now complete! Thank you for choosing Baja Designs.