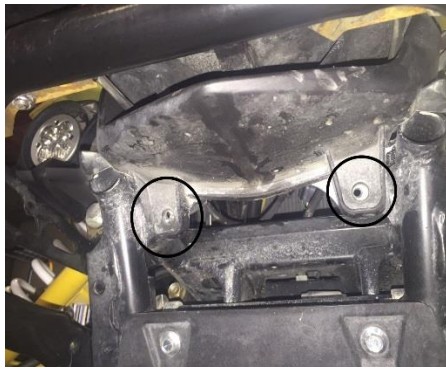




**baja designs**  
The Scientists of Lighting

**Yamaha YXZ Headlight Replacement Kit 44-7009**

1. Start by removing (2) factory plastic pins and (3) bolts located on the nose of the YXZ.



2. Remove (3) 10mm bolts per side holding the plastic shroud to the headlight core support. (2) on the back of the support (1) on the bottom.



3. You can now remove the factory plastic cowl assembly and place to the side.
4. Remove (2) 12mm Bolts per side holding the headlight core support to the chassis.
5. Unplug the factory headlights and remove the headlight core support.
6. Remove factory headlights from the headlight core support.
7. Install Baja Designs Squadrons onto the supplied brackets. Driving/Combo inside & Spot Beam on the outside. **Please make it noted the direction of both the Squadron brackets and the supplied YXZ brackets.** Then attach the bracket to the headlight core support using the supplied hardware. (While installing hardware we recommend leaving hand tight for adjustability at a further step).



**baja designs**  
The Scientists of Lighting



8. Reinstall the headlight core supports.
9. Place the headlight shroud back in place. This is where you are able to make adjustments to your brackets to allow for proper fitment. Once desired position has been acquired remove plastic headlight shroud and tighten hardware.
10. Re-install headlight shroud and all factory hardware. **Please see steps 1-4 for directions.**
11. Connect supplied wiring adapter that goes from your Baja Designs Squadrons to the factory plugs. Plug labeled (L) is for your Low Beams. Plug labeled (H) is for High Beams. Make sure to tie wires up and away from any moving parts.
12. Your install is now complete. Thank You for choosing Baja Designs: The Scientists of Lighting.



**Note: Due to minimal voltage output from the stator at idle, you might experience a slight flicker in the lights. Once the RPM's increase above idle it will no longer be affected.**