



Auxiliary Transmission Filter Kit Dodge 94-07 (I-00224)












Auxiliary Transmission Filter Kit

Part #	Vehicle	Application
1064017	Dodge	1994-2007

The BD Transmission Filter Kit will provide added security for your performance transmission. Oil normally flowing from the torque converter through the cooler and back to the pan will be filtered thru the LFP5570/ transmission filter that is rated at 98% efficient at 25 micron for extra protection and allow for easy filter replacements.

READ ALL INSTRUCTIONS CAREFULLY BEFORE INSTALLATION

Kit Contents

1604120 Filter Head	1604125 Filter Head Mounting Bracket	1604008 Oil Filter	1604046 ½" NPT x #8 ORB 90° Fitting
			
Qty: 1	Qty: 1	Qty: 1	Qty: 2
1604048M #8 JIC x ¼" NPT Straight Fitting	1604049 #8 JIC-F x ½" Barb – 45°	1604038 #8 Versaflore Tube Ferrule	1604039 #8 Versaflore Tube Nut
			
Qty: 1	Qty: 1	Qty: 1	Qty: 1
1604041 #8 JIC Adapter Union	1452821 Hose Clamp	1604124 Filter Head Bolt	1300130 Long Tie Wrap
			
Qty: 1	Qty: 4	Qty: 2	Qty: 2
1100111 ¼" Flat Washer	1100112 ¼" Lock Washer	1604047 #8 JIC x ½" Hose	1604054 1/2" Transmission Hose
			
Qty: 2	Qty: 2	Qty: 3	Qty: 1 x 74"
1500359 3/8" Thread Cutting Bolt	1200105 Flat Washer	1120031 3/8" Lock Washer	1120033 3/8" Nut
			
Qty: 2	Qty: 2	Qty: 2	Qty: 2

Tools Required

- Set of combination wrenches
- Power drill with 1/8", 1/4" & 3/8" bits
- Hammer
- Center punch
- Drain pan
- Pipe cutter
- Thread sealant (liquid, paste or tape)

Oil Filter Cross Reference

HASTINGS	BALDWIN	DONALDSON	FLEETGUARD	FRAM	LUBER-FINER	WIX
LF364	BT230	P555570	LF3342	PH3519	LFP5570	51268

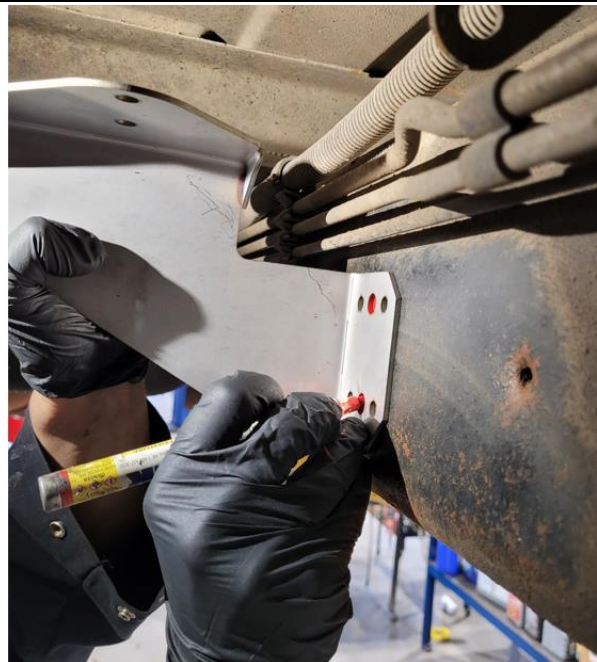
Installation

Raise the vehicle on a hoist or safety stands to gain access to the driver's side of the transmission area.

Locate and clean a spot to mount the filter housing along the left hand (driver side) frame rail.



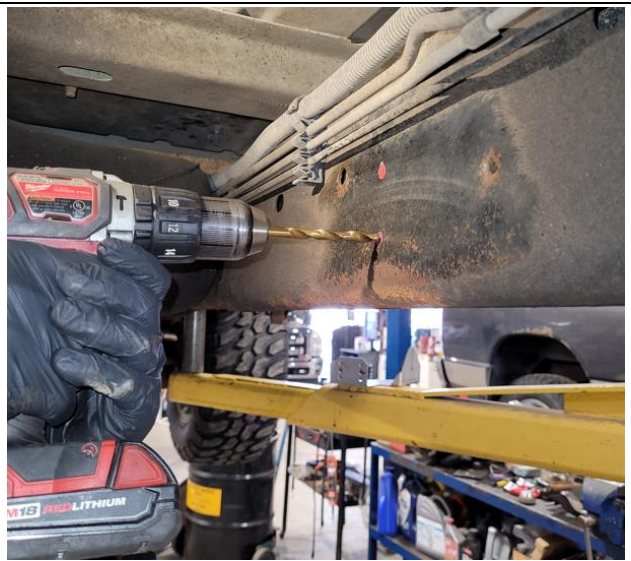
Using the filter mounting bracket as a guide, mark the 2 spots for the mounting bolts. The bracket will be positioned so that the filter will be pointing downward when installed as shown.



To allow for easier drilling, center-punch the two marked spots for the mounting bolts.



Using a 5/16" drill bit, drill pilot holes for thread cutting mounting bolts.



Make pilot thread using supplied thread cutting bolt on the two holes as shown.



Place the trans filter bracket and tighten the two bolts using breaker bar as shown

Nuts and lock washers are supplied for applications where access to the back of the bolts is available.



Install the two **90° ORB fittings** (1604046) into the filter head (do not use pipe sealant). When installed, the fittings need to point toward the front of the vehicle. For ease of installation, we recommend assembling the fittings on the filter head on a workbench before installing it onto the vehicle as shown.

Twist the fitting in until the O-ring gets as close as possible to the filter head, then by holding the fitting, tighten the jam nut as shown.



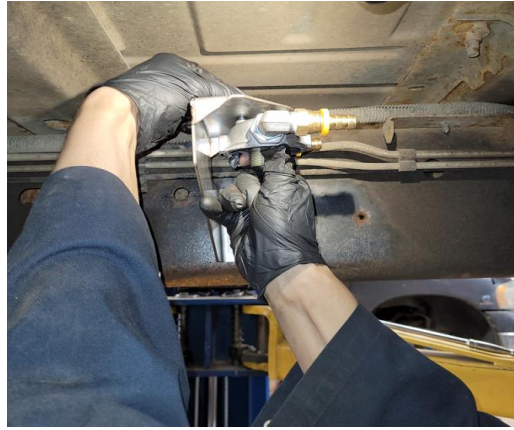
Install the **#8 JIC female fitting x 1/2" hose barbed fitting (1604047)** into the **90° ORB fitting (1604046)** as shown.



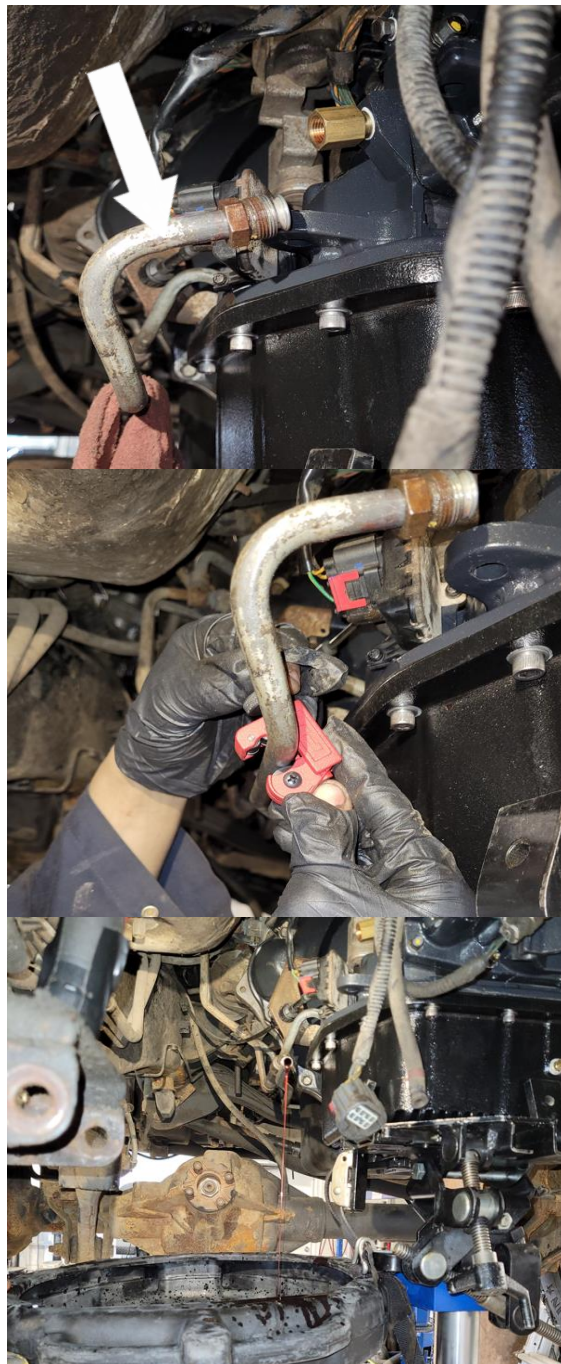
After assembling the fittings on the inlet and outlet ports of the filter head, it is ready to mount on the filter mounting bracket.



Position the filter head on the filter mounting bracket and install the 2 bolts using the flat washers supplied.



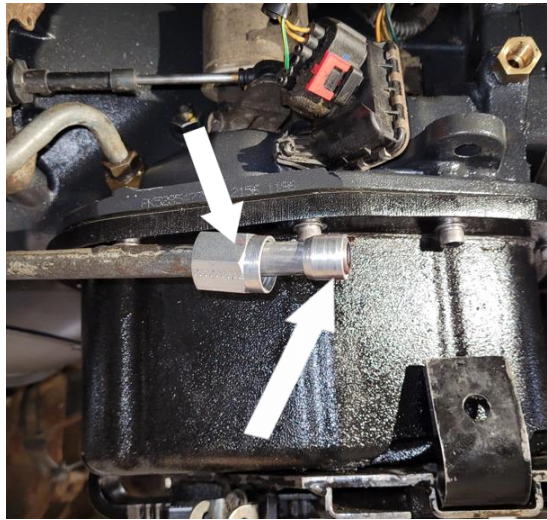
Locate the oil cooler line towards the rear of the transmission.
Using a small pipe cutter, cut the line approximately 6" from the bend.
NOTE: You may want to use the drain pan to capture any spilled fluid as shown.



Clean the ends of the cut pipe and then discard the short portion and fitting from the transmission side.

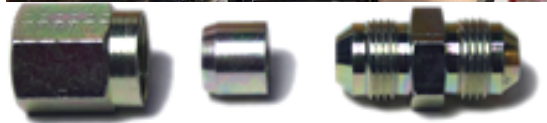
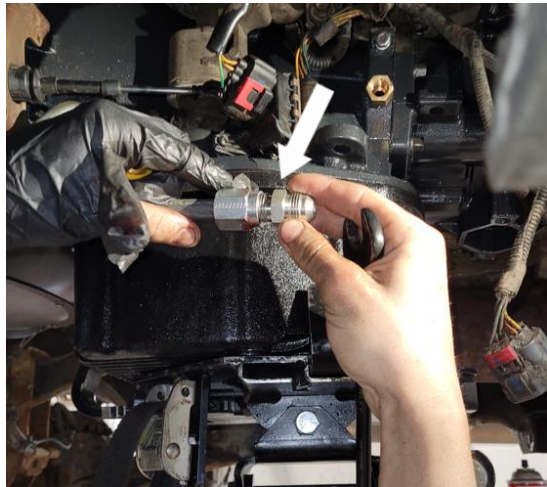


Insert the supplied fitting components as shown



Insert the compression nut, compression ferrule and the JIC fitting (1604041) over the forward portion of the transmission line and tighten.

These are pressure fittings so do not over-tighten.





Install the straight 1/4NPT-JIC (1604048M) fitting into the open port on the transmission using pipe sealant on the threads. Thread the fitting in finger tight, and then turn once more with a wrench. Do not over torque as you will damage the case.



Thread the strait JICF to 1/2 Hose barb fitting (1604047) on strait JICM in place. Use a second wrench to hold the JIC fitting as shown.

Thread sealant is not needed.

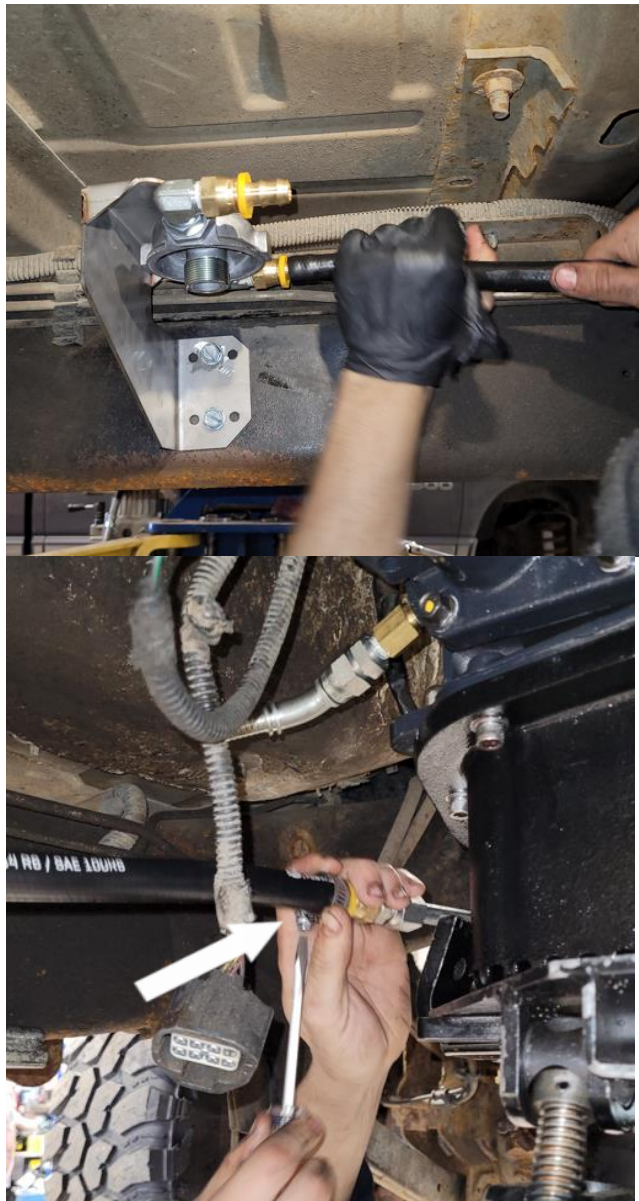


Thread the 45° JICF to 1/2 Hose barb fitting (1604049) in place. Align the hose inlet correctly and tighten with a wrench, use a second wrench to hold the NPT(1604048M) fitting.

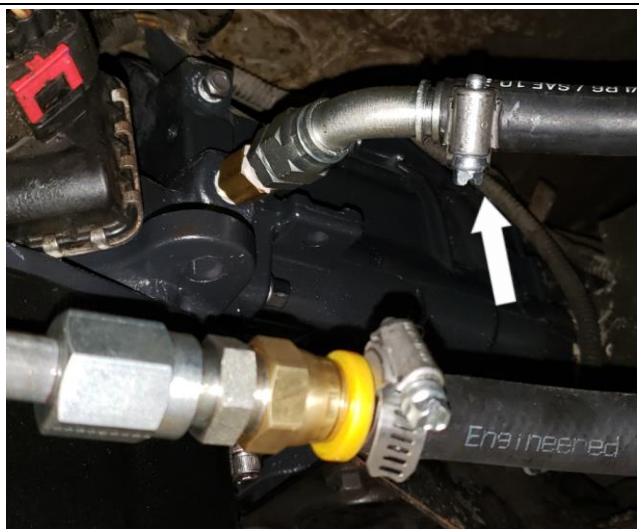
Thread sealant is not needed.



Measure and cut a section of the transmission filter hose supplied and install onto the barb fitting at the “IN” port of the filter head and secure it tightly with hose clamps. Install the other end of the hose onto the barb fitting attached to the return line from the cooler and secure tightly with hose clamps as shown.



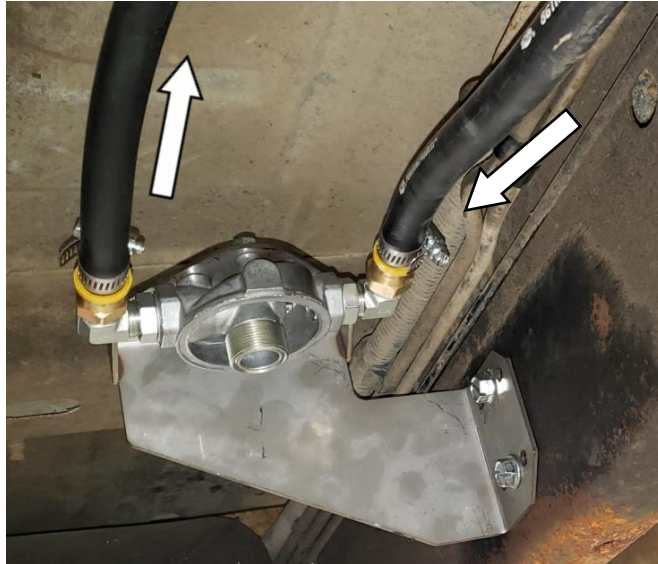
Measure and cut a section of the transmission filter hose supplied and install onto the barb fitting at the “Outlet” port of the filter head and secure it tightly with hose clamps. Install the other end of the hose onto the 45° barb fitting placed on the transmission secure tightly with hose clamps as shown.



Flow direction from cooler to the filter and from the filter to the transmission case.

Note:

When routing hoses, make sure that they are not rubbing against anything that will cause them to wear. Secure the hoses using tie wraps, but leave enough slack for flex movement.



Add fresh transmission fluid into the oil filter (check with transmission specifications for proper fluid type or confirm with vehicle owner as which fluid he may be using) and lubricate the oil filter seal with some fresh transmission fluid.

Screw the filter onto the threads of the filter head and once the rubber seal has contacted the mating surface of the filter head, tighten the oil filter an additional $\frac{1}{4}$ to $\frac{1}{2}$ turn.

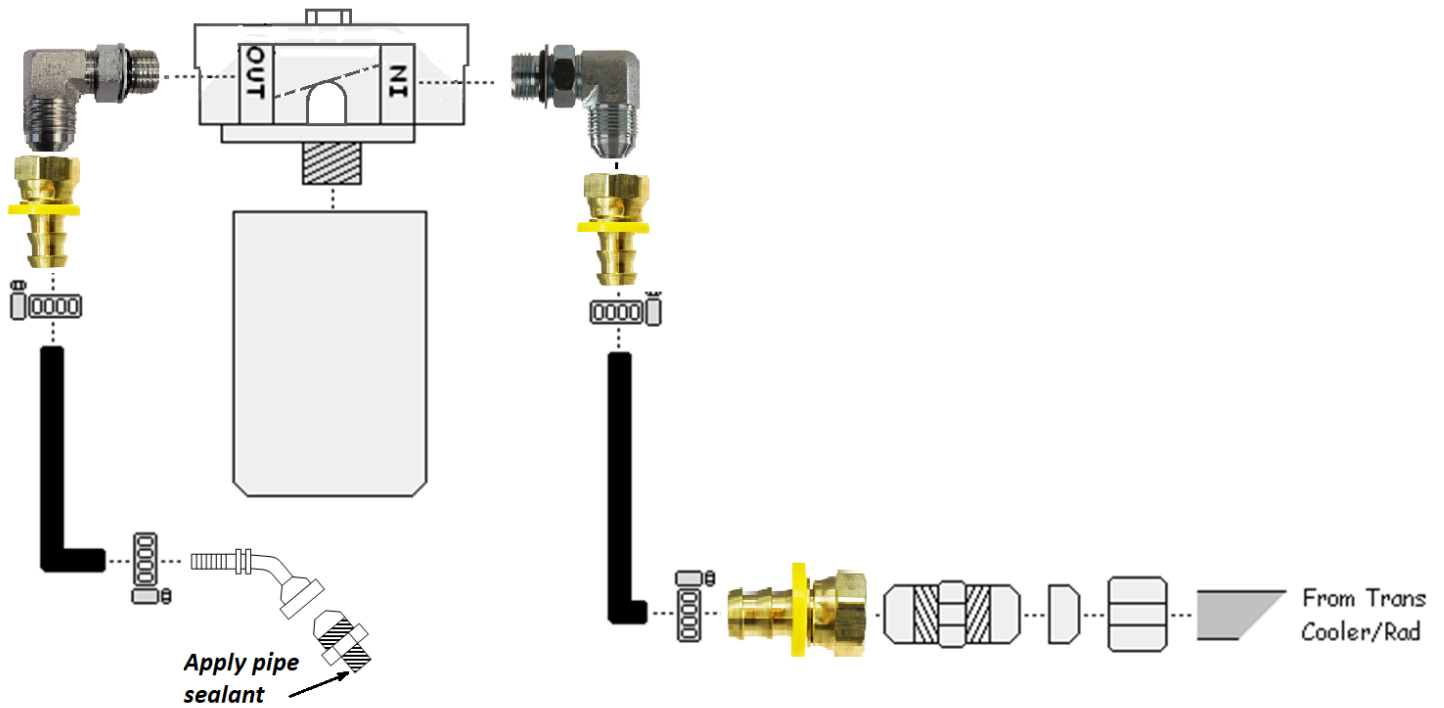
Note:

Do not use a filter wrench to tighten the filter element and do not over tighten the filter.



After installation is completed, take the vehicle on a short road test, check for any leaks and top up the fluid level.

Filter Flow Layout



If you experience any problems or difficulties with the installation of this kit, please contact the BD Technical Department at (800) 887-5030 or fax at 1-604-853-8749, between 8:00am and 4:30pm Pacific Standard Time.

