

BBK PERFORMANCE LLC
3060 Performance Circle
Deland, FL 32724

For any questions, email us:
TECH@BBKPERFORMANCE.COM



INSTALLATION INSTRUCTIONS - INS189

HEADER

Part # 4052 and 40520 // 1993-1999 Jeep Wrangler 4.0L
and Jeep/Grand/Cherokee 4.0L 2WD & 4WD



Special Tools required: Basic Tools



Install Time: Approximately 3-4 hours.



Difficulty: Average.



NOTE! Be sure to re-torque the intake manifold and header bolts after the initial start up and after 100 miles of driving.

MADE IN U.S.A.

IMPORTANT: All appropriate safety equipment and gear must be used during the installation of this or any BBK Performance products or any time you work on a vehicle. BBK Performance accepts no responsibility for injuries or damage caused by or during the installation of this product.

UPDATED LAST: March 2019

FOLLOW THESE INSTRUCTIONS CAREFULLY TO ENSURE CORRECT FITMENT AND OPERATION

STEP 1

Disconnect the negative battery terminal.

STEP 2



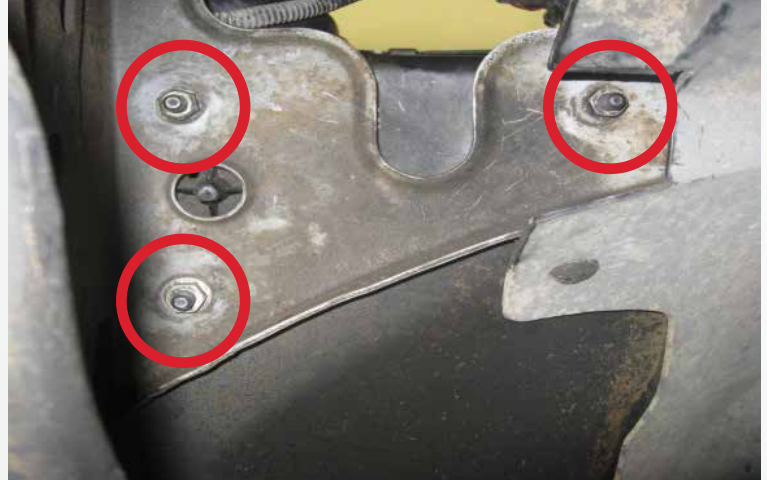
Loosen the clamp at the throttle body by pulling the locking tab up.

STEP 3



Remove the clips holding the top half of the stock air box assembly together to the bottom half, and also remove both-vent hoses going to the air box.

STEP 4



From underneath the vehicle remove the 3 nuts that secure the stock air box assembly.

STEP 5



While still underneath the vehicle, remove the hardware from the collector to the head pipe.

MADE IN U.S.A.

IMPORTANT: All appropriate safety equipment and gear must be used during the installation of this or any BBK Performance products or any time you work on a vehicle. BBK Performance accepts no responsibility for injuries or damage caused by or during the installation of this product.

UPDATED LAST: March 2019

FOLLOW THESE INSTRUCTIONS CAREFULLY TO ENSURE CORRECT FITMENT AND OPERATION

STEP 6



REMOVAL OF THE STEERING PUMP

Remove the long adjusting bolt from underneath the steering pump.

STEP 8



Remove the top bolt on the black bracket above the pump and the nut on the bottom of the steering pump.

STEP 7



Remove the 2 mounting bolts on the back of the steering pump.

STEP 9



After removing the belt and un-mounting the steering pump, move it off to the side to aid in Header installation.

MADE IN U.S.A.

IMPORTANT: All appropriate safety equipment and gear must be used during the installation of this or any BBK Performance products or any time you work on a vehicle. BBK Performance accepts no responsibility for injuries or damage caused by or during the installation of this product.

UPDATED LAST: March 2019

FOLLOW THESE INSTRUCTIONS CAREFULLY TO ENSURE CORRECT FITMENT AND OPERATION

STEP 10



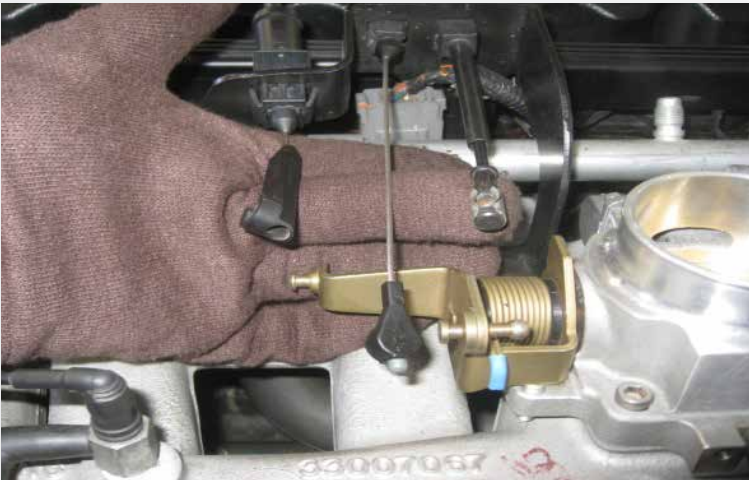
Remove the 3 bolts holding the steering pump bracket to the intake manifold.

STEP 12



Unplug all the electrical connections going to the throttle body. Unbolt and remove the throttle body.

STEP 11



REMOVAL OF THE THROTTLE BODY

Unclip the cable attachments from the throttle body linkage.

STEP 13



REMOVAL OF THE INTAKE MANIFOLD

Unbolt the bracket holding the throttle body cables and move to the side.

🇺🇸 MADE IN U.S.A. 🇺🇸

IMPORTANT: All appropriate safety equipment and gear must be used during the installation of this or any BBK Performance products or any time you work on a vehicle. BBK Performance accepts no responsibility for injuries or damage caused by or during the installation of this product.

UPDATED LAST: March 2019

FOLLOW THESE INSTRUCTIONS CAREFULLY TO ENSURE CORRECT FITMENT AND OPERATION

STEP 14



Disconnect all the fuel injector connections (6 total) and any other electrical connections for the intake manifold.

STEP 16



Remove all air lines (6 total) going to the intake manifold.

STEP 15



Use a rag to clean up any spilled gas.

Be sure there is no pressure in the fuel system and disconnect the 2 fuel lines going to the fuel rails by squeezing the tabs and pulling back on the lines.

STEP 17



There are 4 bolts in the top.

Remove all the bolts holding the intake manifold to the cylinder head.

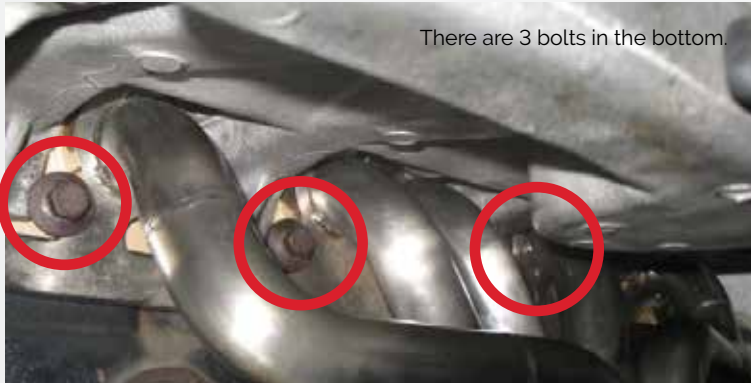
MADE IN U.S.A.

IMPORTANT: All appropriate safety equipment and gear must be used during the installation of this or any BBK Performance products or any time you work on a vehicle. BBK Performance accepts no responsibility for injuries or damage caused by or during the installation of this product.

UPDATED LAST: March 2019

FOLLOW THESE INSTRUCTIONS CAREFULLY TO ENSURE CORRECT FITMENT AND OPERATION

STEP 17 (CONT.)



Remove all the bolts holding the intake manifold to the cylinder head.

STEP 18



REMOVAL OF THE STOCK EXHAUST MANIFOLD

Remove all the hardware and remove the stock exhaust manifold from the vehicle.

STEP 19



INSTALLING THE BBK HEADER

Place the BBK Header into position and tighten the header down using the stock hardware.

STEP 20

RE-INSTALL THE INTAKE MANIFOLD

Re-install the intake manifold by repeating steps 13-17

STEP 21

Tighten the intake manifold by starting from the middle bolts and going outwards.

STEP 22

Re-install the throttle body and steering pump. When tightening the belt adjuster (long bolt on bottom of the steering pump) there should be no more than ¼ inch of total play in the belt.

 **MADE IN U.S.A.** 

IMPORTANT: All appropriate safety equipment and gear must be used during the installation of this or any BBK Performance products or any time you work on a vehicle. BBK Performance accepts no responsibility for injuries or damage caused by or during the installation of this product.

UPDATED LAST: March 2019

BBK PERFORMANCE LLC
3060 Performance Circle
Deland, FL 32724

For any questions, email us:
TECH@BBKPERFORMANCE.COM



FOLLOW THESE INSTRUCTIONS CAREFULLY TO ENSURE CORRECT FITMENT AND OPERATION

STEP 23



Re-install the Air Intake Assembly and tighten the header to the head pipe using the supplied hardware.

STEP 24

Reconnect the negative battery terminal



INSTALLED ON THE VEHICLE



Part # 4052



Part # 40520

MADE IN U.S.A.

IMPORTANT: All appropriate safety equipment and gear must be used during the installation of this or any BBK Performance products or any time you work on a vehicle. BBK Performance accepts no responsibility for injuries or damage caused by or during the installation of this product.

UPDATED LAST: March 2019

