



## Ascent Canopy - Roof Bar Mount Kit



**Maximum carrying capacity: As stated on internal frames compliance label inside the canopy**

**Installation Time: Approx. 1 hour approx. Plus internal frame fitment time**

**! PLEASE PROVIDE A COPY OF THESE INSTRUCTIONS TO THE CUSTOMER !**

### IMPORTANT:

- It is advisable to have the canopy roof bars fitted by an authorised dealer.
- **Thule and Rhino Vortex branded roof bars must only be used.** Roof bars are sold separately.
- This product is designed for fitment with internal frame brackets.
- **INTERNAL FRAME BRACKETS MUST BE FITTED TO THE STAGE “SECTION 3- FITTING THE ROOF BARS TO THE CANOPY”** These are vehicle specific and sold separately, refer to the application chart via you ARB dealer, or call ARB.
- It may be necessary to readjust the Ascent Canopy's lift up window and door latches after fitment of roof bars due to deflection of the canopy through the tightening of bolts. Please refer to the Ascent Canopy fitting instructions in section entitled “Operational Checks and Adjustments for Windows and Doors” for latching adjustment steps. Call ARB for a copy if required.
- Fitment can be undertaken with one person, however two people are required to bolt roof bars to the roof of the canopy.

### CARE OF YOUR CANOPY:

Please refer to the “Owner’s Manual Supplement” to be given to the purchaser on installation, this is contained within the separate additional kit fitting instructions for the “Internal Frames”. This contains important use and maintenance instructions that customer MUST be aware of.

### OWNERS MANUAL SUPPLEMENTS:

Please fill out the owner’s manual supplement in the “Internal Frame” instructions and provide this to the customer. If these are unavailable please reprint (Instruction no. 3789209)

### RECORDS OF FITMENT:

Please complete the last page Fitment Check List of the “Internal Frame” instructions and retain these records at the dealer.

### WARRANTY:

Please refer to ARB “Warranty against defects” booklet contained in the hardware kit of the “Internal Frames” or contact your dealer. A copy of this booklet should be given to the customer.

### SAFETY:

The ARB Ascent Canopy Roof Bar Mount Kit must never be fitted to another product. ARB Roof Bar Mount Kits MUST be fitted with the specific Ascent Canopy Internal Frames.

### HAVE AVAILABLE THESE SAFETY ITEMS WHEN FITTING PRODUCT:

Protective eyewear		Hearing protection	
--------------------	--	--------------------	--

*NOTE: ‘WARNING’ notes in the fitting procedure relate to OHS situations, where to avoid a potentially hazardous situation it is suggested that protective safety gear be worn or a safe work procedure be employed. If these notes and warnings are not heeded, injury may result.*

## TOOL LIST FOR FITMENT:

<ul style="list-style-type: none"><li>• Torque Wrench 0-25Nm.</li><li>• Socket 10mm, extension bar and driver.</li><li>• Spanner 10mm , 13mm.</li><li>• Tape Measure/ Ruler</li><li>• T40, Torx Drive socket drivers.</li><li>• Small flat blade screwdriver.</li><li>• Sharp Scissors.</li><li>• Isopropyl alcohol.</li><li>• Silicon Caulking Gun</li><li>• <u>Neutral cure</u> Non Acetic Silicon (such as Polyurethane)</li></ul>	<ul style="list-style-type: none"><li>• Scriber</li></ul>
---	---

## FITTING THE ROOF BARS IS UNDERTAKEN IN 4 STAGES:

1. Preparing the roof channel pedestal mount brackets & seals and fitting the roof mount spacers.
2. Pre-fitting the pedestal brackets to the roof bars.
3. Fitting the roof bars to the canopy
4. Clean, check list and Owner's Manual Supplement.

**!! IMPORTANT !! other than specifically specified in this instruction**

**REQUIRED SCREW TORQUES: M6=9Nm M8=22Nm**

**Screw torques must be adhered to avoid warranty issues and should be checked at each vehicle service interval.**

## THE BOX FITTING KIT CONTAINS:

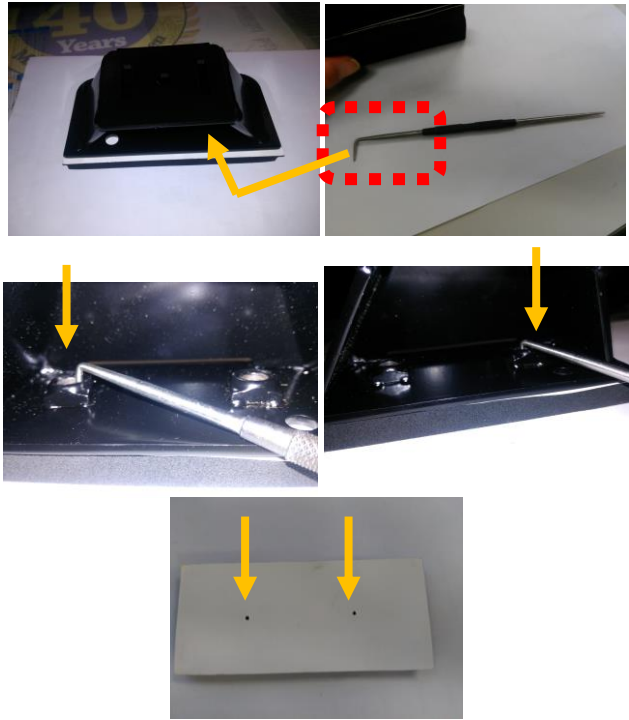
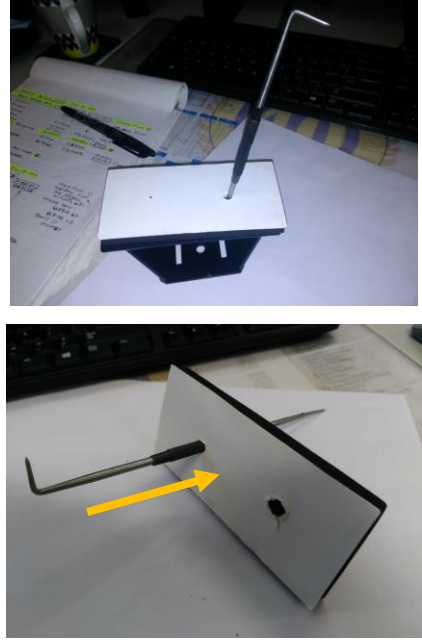
Part No	Picture	Qty	Description
3194623		4	PLATE - SPACER THULE CHANNEL
3759366		4	BRACKET- THULE CHANNEL
665510		4	SEAL CHANNEL BRKT 9.5mm THICK NGC CANOPIES
3194123		4	PLATE LOCKING M6
6151300		4	M6 CAGE NUT
6151228		4	M6 X 30mm HEX BOLT - BLACK
4581287		4	M6 BLACK SPRING WASHERS - BLACK
6151881		8	SCREW-M8X35 TORX PAN GD 8.8 ZNB 480 NYLON PATCH
6250056		8	SPACER ROOF MOUNT OD 24.8 X ID10.5 SHLDR LENGTH 8.0MM
6151547		8	M8 NYLOCK NUT - BLACK
4581303		8	M8 X 25.4MM X 3MM THICK FLAT WASHERS - BLACK
4581085		8	M6 X 19 X 1.2MM THICK FLAT WASHERS - BLACK
215618		2	ARB DOMED BADGES
<b>1. SMALL PARTS BAG</b>			
<p><b>NOT USED IN:</b>            MERCEDES X-CLASS KIT 4100560            OR            ISUZU DMAX AND MAZDA 2020+ KIT 4148110            OR            NISSAN NP300 2021+ 4138110            OR            FORD RANGER P703 2022+ 4140470            OR            VW AMAROK DC 2023+            OR            MIT TRITON DC MY24+</p>			
<b>2. PEDESTAL BRACKETS</b>			
A		1	BRACKET – RIGHT HAND FRONT *** IMPORTANT- REFER BELOW FOR CORRECT BRACKET ***
B		1	BRACKET - LEFT HAND FRONT *** IMPORTANT- REFER BELOW FOR CORRECT BRACKET ***
C		1	BRACKET - RIGHT HAND REAR *** IMPORTANT- REFER BELOW FOR CORRECT BRACKET ***
D		1	BRACKET - LEFT HAND REAR *** IMPORTANT- REFER BELOW FOR CORRECT BRACKET ***

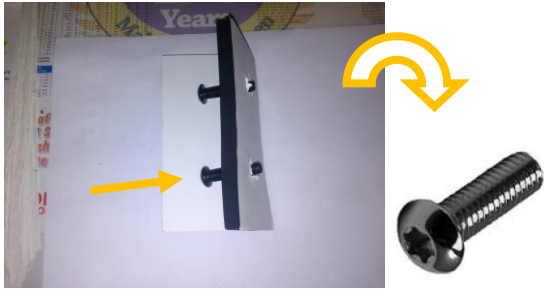
Note: It is important to choose the correct Brackets. Pedestal Brackets can be identified by an I.D. Number in the upper face and located as per the table below.

VEHICLE APPLICATION:	BRACKET RH Front "A"	BRACKET LH Front "B"	ID Number	BRACKET RH Rear "C"	BRACKET LH Rear "D"	ID Number
Ford Ranger PX 2011+	3759364R	3759364L	364	3759365R	3759365L	365
Mazda BT50 2011+	3759364R	3759364L	364	3759365R	3759365L	365
GM Colorado 2012+	3759477R	3759477L	477	3759476R	3759476L	476
Isuzu DMAX 2012+	3759477R	3759477L	477	3759476R	3759476L	476
Nissan Navara NP300 2015-2021	3759477R	3759477L	477	3759476R	3759476L	476
Mitsubishi MQ Triton 2015-2023	3759817R	3759817L	817	3759818R	3759818L	818
Volkswagen Amarok 2011+	3759920R	3759920L	920	3759477R	3759477L	477
Toyota Hilux J-Deck 2015+	3750090R	3750090L	090	3750094R	3750094L	094
Toyota Hilux 2016+	3759725R	3759725L	725	3759726R	3759726L	726
Mercedes X-Class 2018+	3752363R	3752363L	363	3752363L	3752363R	363
Isuzu DMAX & Mazda BT-50 2020+	3750554R	3750554L	554	3750555R	3750555L	555
Nissan Navara NP300 2021+	3753015R	3753015L	015	3753014R	3753014L	014
Ford Ranger Dual Cab 2022+	3753242R	3753242L	242	3753244R	3753244L	244
VW Amarok DC 2023+	3755336R	3755336L	336	3755337R	3755337L	337
Mitsubishi Triton 2024+	37500312R	37500312L	312	37500314R	37500314L	314
Toyota Tacoma 2024+	37500648R	37500648L	648	37500650R	37500650L	650

# **BEFORE STARTING, READ ALL STEPS OF THE INSTRUCTIONS CAREFULLY AND CHECK ALL PARTS**

## **SECTION 1: PREPARING THE ROOF CHANNEL PEDESTAL MOUNT BRACKETS & SEALS AND FITTING THE ROOF MOUNT SPACERS:**

	<p>1.1) Place the “SEAL CHANNEL BRACKET” onto a flat surface with backing paper facing up &amp; place the bracket on top of the seal ( line up the bracket base plate with the outside profile of the seal.</p> <p>1.2) <b>Use a scribe to transfer the hole centres of the base plate on to the back of the seal.</b></p>
	<p>1.3) Place the seal back on to the base plate with the backing paper facing up and pierce the centre of the holes with the scribe. Gently push the scribe through the foam seal to open up the hole diameter then remove the scribe from the seal.</p>



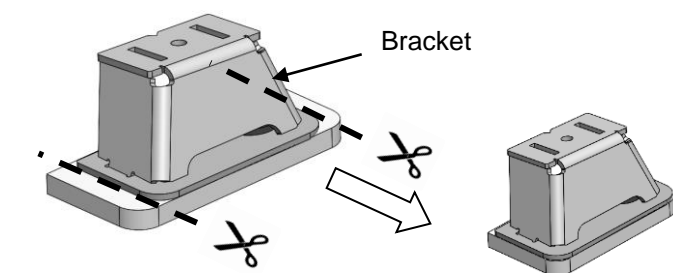
1.4) Turn the seal over & using two 6151881 screws, push & rotate the screws through the foam seal and backing paper so the screws protrude through the seal.



1.5) Remove the backing paper from the foam seal and apply the adhesive side to the underside of each of the 4 pedestal brackets.



Line up the screws to the centre-line of the holes in the bracket and push the seal down onto the face of the bracket then remove the screws



Toyota Tacoma Brackets only

1.6) **Toyota Tacoma Brackets only** Trim excess seal on both ends of the pedestal bracket parallel to bracket edges for all four (4) brackets as shown.



1.7) Assemble 4 of the LOCKING PLATES (3194123) with 4X M6 CAGE NUTS (6151300). Clip the cage nuts in by using a flat blade screwdriver.



- 3194123 - PLATE LOCKING M6 FITTED WITH CAGE NUT
- ALL BRACKETS
- 3194623 - PLATE SPACER
- 3759366 – THULE CHANNEL
- 4581287- M6 SPRING WASHER
- 6151228 – M6 X 30 BOLT

1.8) Layout the hardware for each pedestal bracket as shown.



1.9) Assemble the M6x 30 bolt with M6 spring washer under the head through the “U” shaped THULE CHANNEL bracket then place the PLATE SPACER down inside the THULE CHANNEL bracket channel so the ends of the spacer locate as shown.

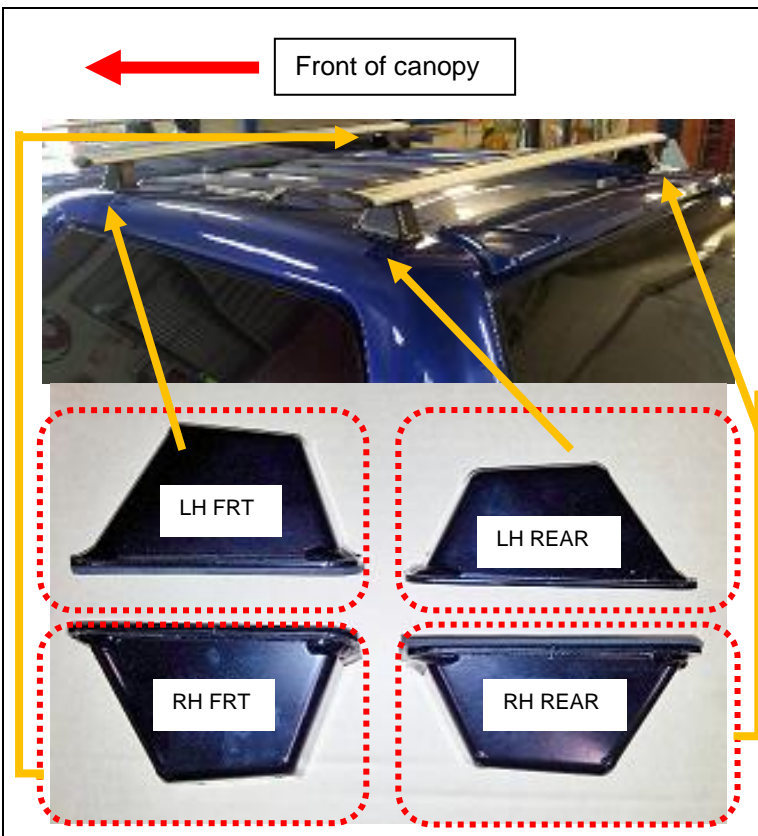
1.10) Assemble the above into the inside of the channel bracket so that the ends of the THULE CHANNEL bracket pass through the slots in the top of the pedestal brackets . **Loosely** assemble the bolt through to thread into the cage nut on the “Plate Locking”.

The cage nut should be facing upwards, on top of the assembly



- 1.11) **Note:-Using the Holes that have been drilled from the previously fitted internal frame kit**
- 1.12) Go the roof of the canopy shell.
- 1.13) Apply Neutral cure silicon to the stepped edge of the 8 x Spacer roof mount
- 1.14) Fit the spacers into the 8 holes in the roof of the canopy from the outside
- 1.15) Clean away excess silicone using wax and grease remover.

## **SECTION 2: PRE-FITTING THE PEDESTAL BRACKETS TO THE ROOF BARS.**



- 2.1) Note the positions of the pedestal bracket types on the roof line of the canopy. **The “A” and “B” channel pedestal brackets go to the front of the canopy with the longer side of the wedge facing forwards. The “C” and “D” brackets go to the rear of the canopy with the longer side of the wedge pointing rearwards.**



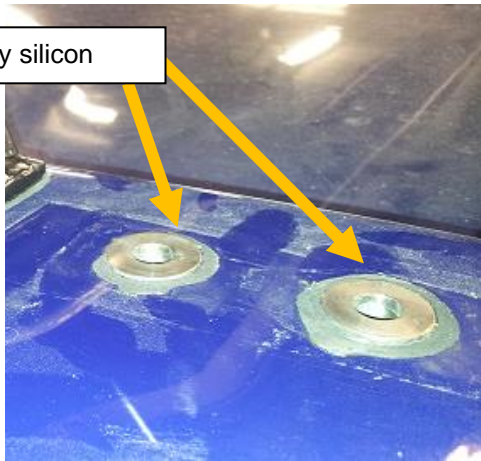
- 2.2) Slide the channel pedestal brackets with the solid face side outwards, into the roof bars so that the locking plate and cage nut assembly is slid up the groove of the roof bars

**Hand tighten the M6 bolt.**

**Repeat this for the opposite side of each of the roof bars.**

### SECTION 3: FITTING THE ROOF BARS TO THE CANOPY

Apply silicon



FRONT  
ROOF BAR



REAR  
ROOF BAR



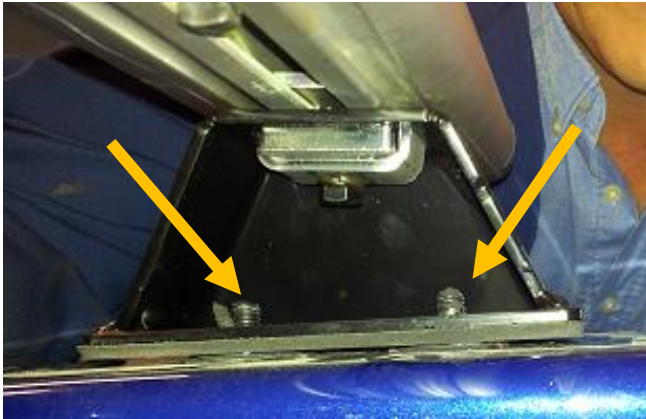
- 3.1) From previously fitting the internal frame kit first, locate the holes in the roof of the canopy.

**Apply non-acetic silicon around the tops of the spacers.**

- 3.2) Sit the roof bars pedestal brackets over the spacers so the holes in the feet of the pedestal brackets line up to the holes in the canopy roof.

- 3.3) Go inside the canopy. Using 2 x M8x25mm Torx bolts (6151625) and 2 x WASHER M8X19X1.2 BZP (**small M8 washer**) (4581085), push the bolts through the holes in the internal frame brackets and through the foam seals in the channel pedestal brackets.





3.4) A second person outside the canopy should help guide the bolts through piercing the foam tape pads on the channel pedestal brackets.



3.5) Locate the M8 x 25.4 x 3mm thick flat washers (**large M8 washers**) (4581303) over the bolts protruding through the channel pedestal brackets. Then place on the M8 nylon nuts. **Note for Mercedes X Class these nuts are not required**



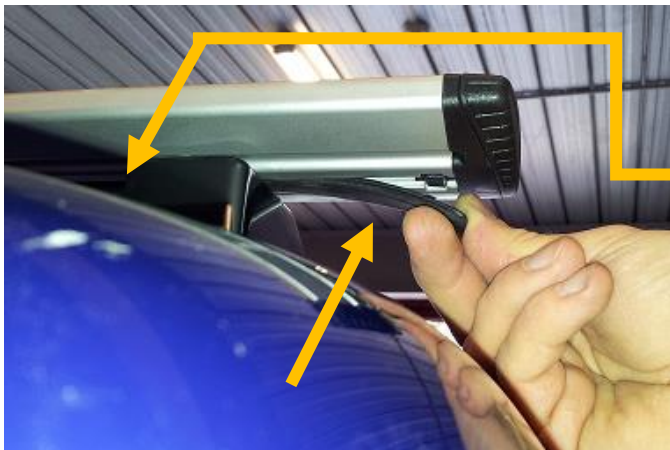
3.6) Go to the inside of the canopy. **Tighten all bolts using a T40 Torx drive to 22Nm.**  
**!! IMPORTANT !! – Torque the bolts correctly, incorrect tightening may lead to water leaks or damage from loosening.**



- 3.7) Fit the roof bars with all rubber trimmings on the top side of the roof bars.
- 3.8) **MEASURE**- Check the roof bars are aligned laterally across the canopy's roof either side.



- 3.9) Tighten the M6 bolts on the underside of the roof bars to **9Nm**, where the channel pedestal brackets attach to the roof bars in all locations.



- 3.10) Contained in the roof bar kit are additional rubber extrusions that fit to the underside of the roof bars. Cut and fit these.
- 3.11) Ensure any sliding measurement guides on the underside of the Thule roof bars are slid up to the inside of the channel pedestal brackets

**These steps MUST, must be done avoid wind noise.**



- 3.12) To the **front** roof bar channel pedestal brackets **ONLY**, clean the face of the brackets with isopropyl alcohol and apply the ARB domed badges so they sit level when viewed from the ground on the vehicle.

## **SECTION 4: CHECK AND CLEAN UP:**



- 4.1) Check bolt torques of all bolts.
- 4.2) Remove all swarf from the canopy and inside the tub
- 4.3) Open and close all windows, check for any resistance to opening from drag on latches.

**If any lift up window or door latch adjustment is required, refer to the Ascent Canopy fitting instructions for adjustment procedure.**

- 4.4) Perform leak test at mount points in the roof from outside using a garden hose.
- 4.5) **Fill in the last page of “Internal Frame” fitting instructions “Check List” and retain records at the dealer.**
- 4.6) **Fill in the second last page of “Internal Frame” fitting instructions “Owner’s Manual Supplement” and give a copy to the customer.**

**IT IS VERY IMPORTANT THIS IS GIVEN TO THE CUSTOMER AS IT CONTAINS IMPORTANT SAFETY INFORMATION IN RELATION TO ROOF BARS.**

- 4.7) **Place a copy of these fitting instructions in the vehicles owner’s manual.**
- 4.8) **Continue fitment of internal frames as per the fitting instruction for the “Internal Frame” kit.**